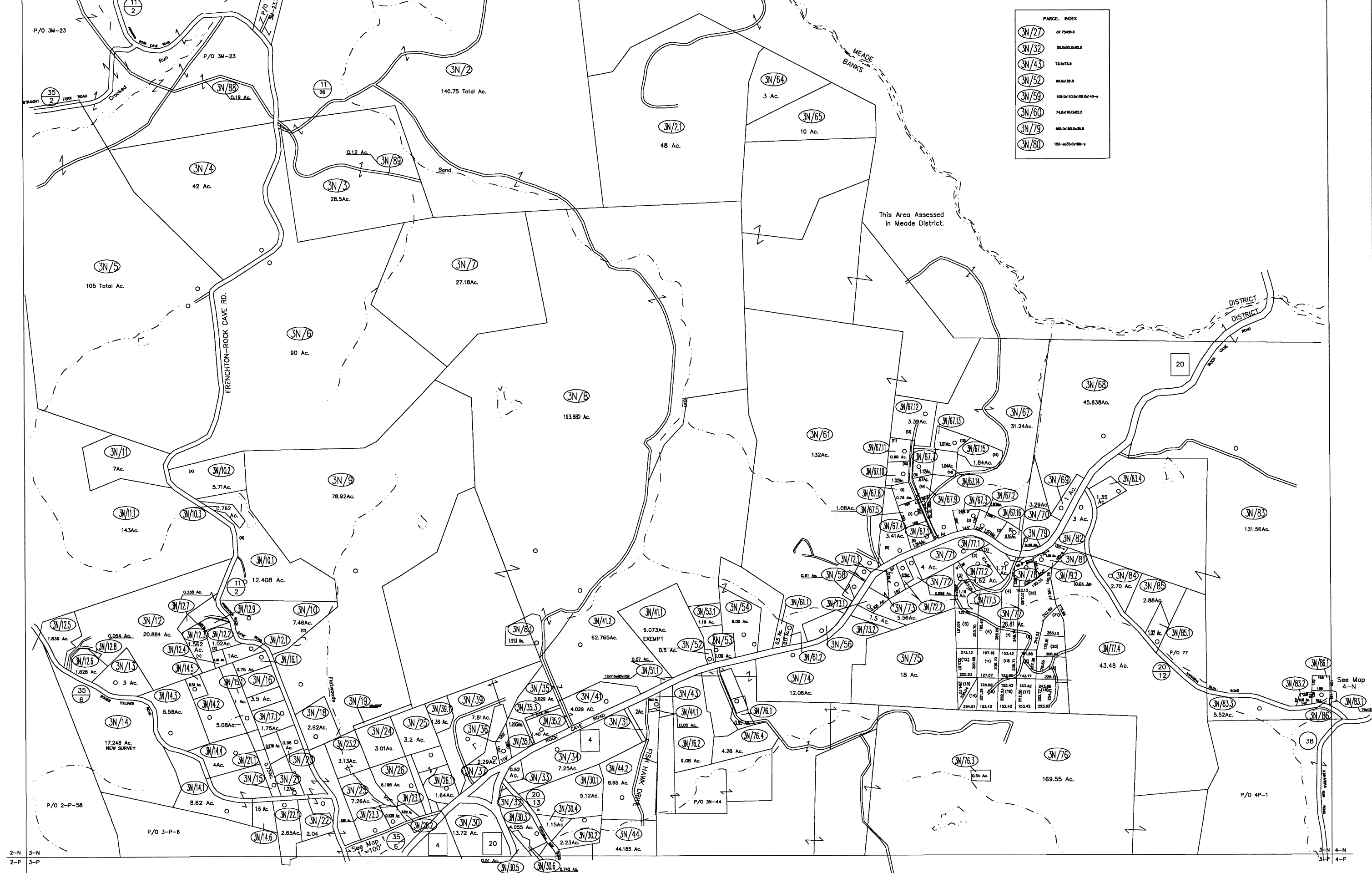


2-M 3-M
2-N 3-N



PARCEL INDEX	
3N/27	67.7540.0
3N/32	60.060.042.0
3N/43	73.5475.0
3N/52	60.04139.0
3N/59	109.04110.04100.04100.0
3N/60	74.84190.0422.0
3N/79	165.04180.0435.0
3N/80	150.04235.04180.0

2-N 3-N
2-P 3-P



For Tax Purposes Only
Prepared by
Upshur County Assessor Office
Helen R. Phillips : Assessor
Donald W. Rice : Mapper

LEGEND	
Property line	—
Edge of pavement or roadway	---
Corporation line	----
District line	-----
County line	-----
Original lot line	---(15)---
Deed lot number	(15)
Parcel or Index number	⊙
Improvement	○
Railroad	—+—

REVISIONS	
1	1/25/2006 HPM
2	9/13/2007 HPM
3	5/9/2008 HPM
4	6/29/2008 HPM
5	8/4/2008 HPM
6	8/26/2008 HPM
7	11/26/2008 HPM
8	3/5/2009 HPM

RESTRICTION

All tax maps created under the provisions of reappraisal legislation are the property of Upshur County West Virginia and the reproduction, copying, distribution or sale of such tax maps or any copies thereof without the written permission of the Upshur County Assessor is prohibited by law.

KEY MAP	
2N 3M	
2N 3N 4N	
2P 3P 4P	

UPSHUR COUNTY
STATE OF WEST VIRGINIA
Office of Assessor

BANKS
SHEET NO: 3-N
Date, Aerial Photography: 4-24-62
Photo No: UP-3-142
Date, Map: 1-30-62
Scale: 1" = 400'