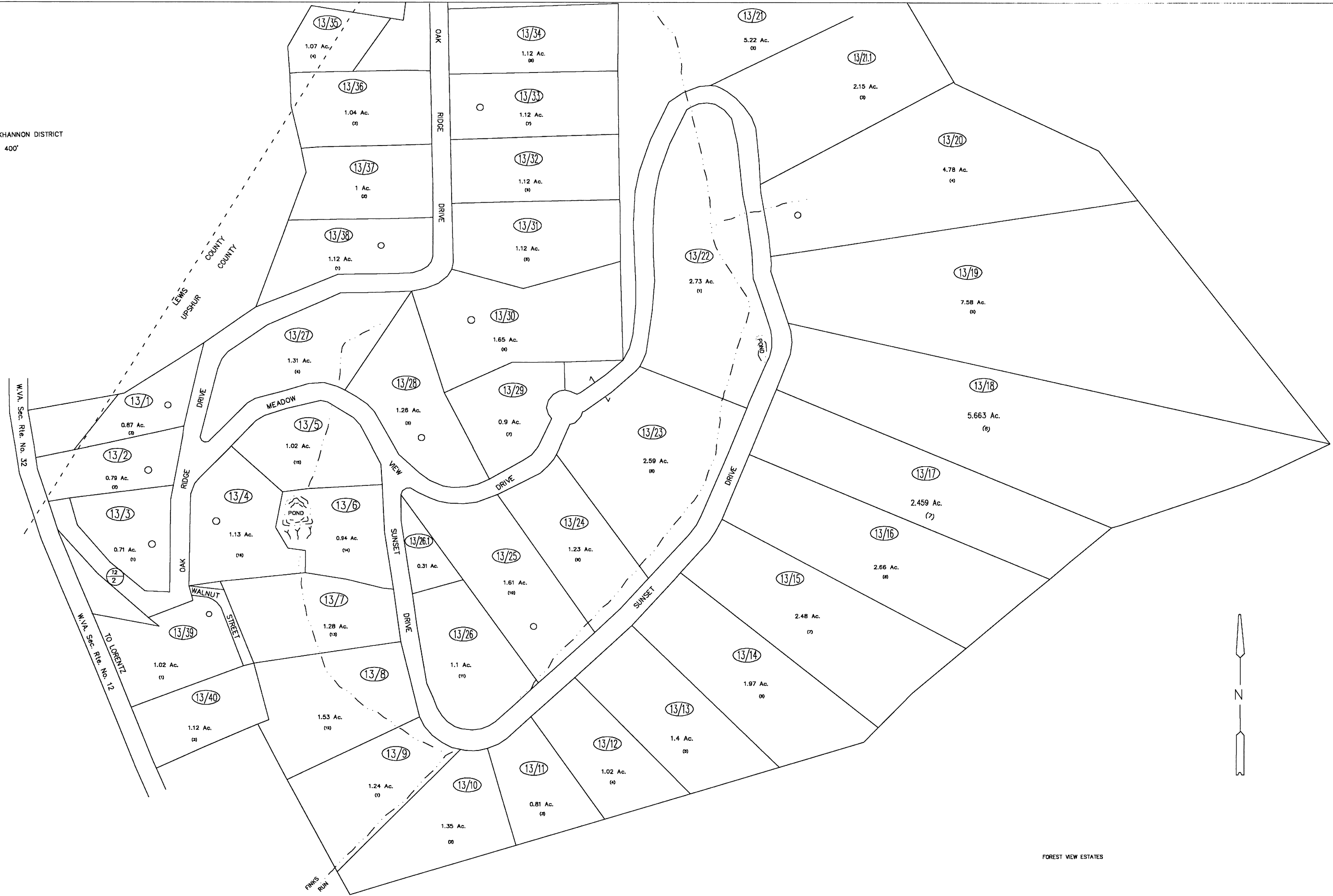


SEE MAP 3E BUCKHANNON DISTRICT  
1" = 400'



FOREST VIEW ESTATES

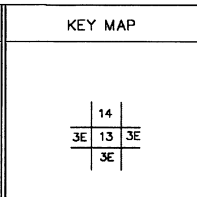
For Tax Purposes Only  
Prepared by  
Upshur County Assessor Office  
Helen R. Phillips : Assessor  
Donald W. Rice : Mapper

LEGEND	
Property line	— — — — —
Edge of pavement or roadway	— — — — —
Corporation line	— — — — —
District line	— — — — —
County line	— — — — —
Original lot line	- - - - - (15)
Dead lot number	(15)
Parcel or index number	(19)
Improvement	o
Railroad	— + — + — + — + —

REVISIONS	
1	11/12/2004 HPM
2	3/5/2009 HPM
3	
4	
5	
6	
7	
8	

RESTRICTION

All tax maps created under the provisions of reappraisal legislation are the property of Upshur County West Virginia and the reproduction, copying, distribution or sale of such tax maps or any copies thereof without the written permission of the Upshur County Assessor is prohibited by law.



UPSHUR COUNTY  
STATE OF WEST VIRGINIA  
Office of Assessor

DISTRICT BUCKHANNON  
SHEET NO: 13  
Date, Aerial Photography: Photo No:  
Date, Map: 4-15-81  
Scale: 1" = 100'