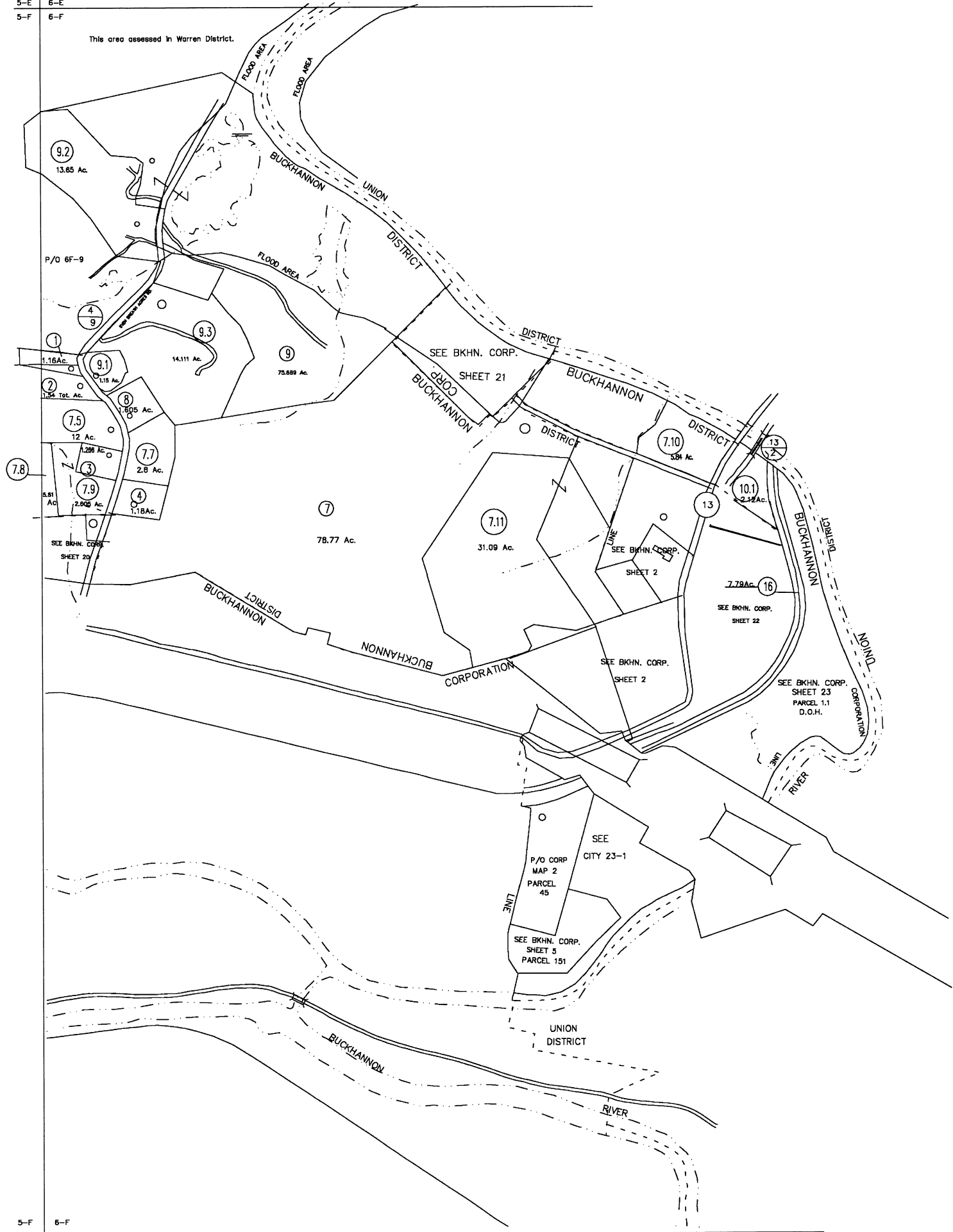
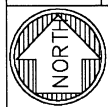


5-E 6-E
5-F 6-F

This area assessed in Warren District.



5-F 6-F
5-G 6-G



For Tax Purposes Only
 Prepared by
 Upshur County Assessor Office
 Helen R. Phillips : Assessor
 Donald W. Rice : Mapper

LEGEND	
Property line	—
Edge of pavement or roadway	- - - -
Corporation line	- · - · -
District line	- - - -
County line	- - - -
Original lot line	- - - - (15)
Deed lot number	(15)
Parcel or Index number	(15)
Improvement	o
Railroad	- · - · -

REVISIONS	
1	11.12.2004 HPM
2	6-29-2005 HPM
3	9/28/2005 HPM
4	5/28/2006 HPM
5	4/20/2007 HPM
6	8/1/2007 HPM
7	8/4/2008 HPM
8	3/5/2009 HPM

RESTRICTION

All tax maps created under the provisions of reappraisal legislation are the property of Upshur County West Virginia and the reproduction, copying, distribution or sale of such tax maps or any copies thereof without the written permission of the Upshur County Assessor is prohibited by law.

KEY MAP	
SE	6E
SF	6F
5G	6G

UPSHUR COUNTY
 STATE OF WEST VIRGINIA
 Office of Assessor

DISTRICT
 BUCKHANNON
 SHEET NO: 6-F
 Date, Aerial Photography: 4-24-62 Date, Map: 11-20-62
 Photo No: UP-3-32 Scale: 1"=400'