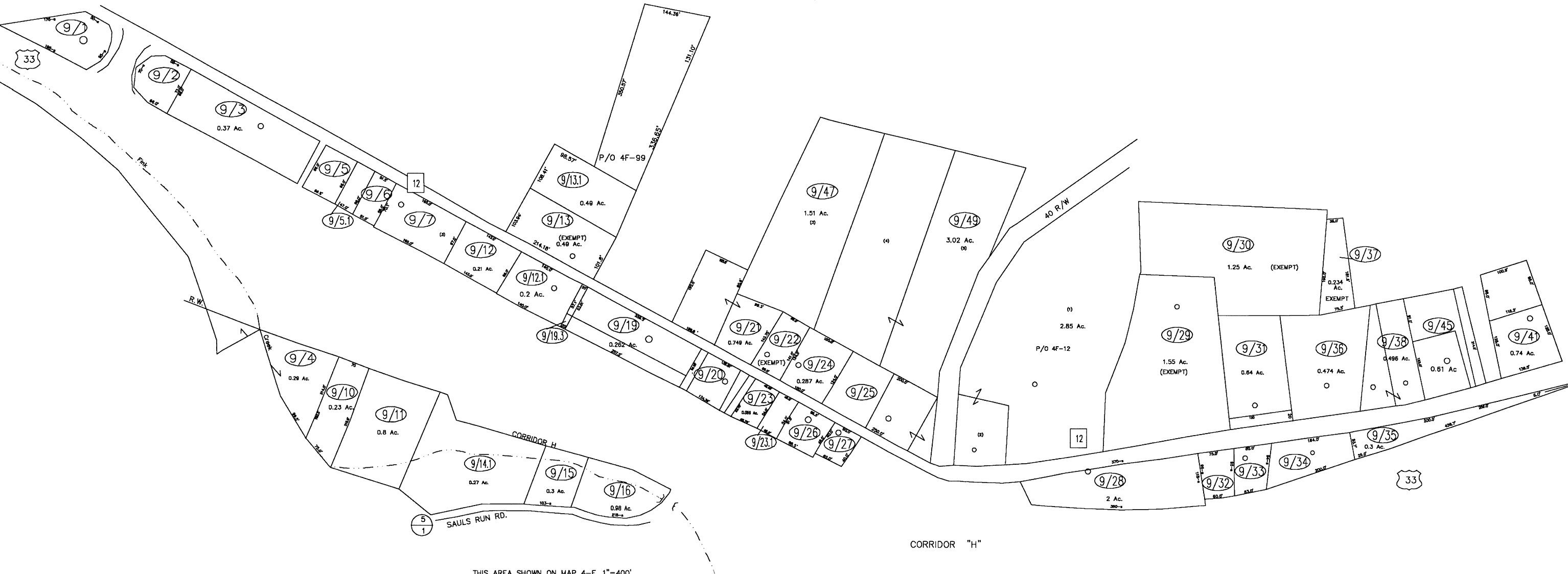


This area shown on map 4-F 1"=400'



THIS AREA SHOWN ON MAP 4-F, 1"=400'

CORRIDOR "H"

For Tax Purposes Only
 Prepared by
 Upshur County Assessor Office
 Helen R. Phillips : Assessor
 Donald W. Rice : Mapper

LEGEND	
Property line	—————
Edge of pavement or roadway	———
Corporation line	-----
District line	-----
County line	-----
Original lot line	-----
Deed lot number	(15)
Parcel or Index number	Ⓣ
Improvement	○
Railroad	—+—+—+—

REVISIONS	
1	02-24-98 DWR
2	08-31-2000 DWR
3	05-13-2003 DWR
4	07-29-2003 DWR
5	10-24-2003 DWR
6	11-29-2004 HPM
7	4/1/2008 HPM
8	3/5/2009 HPM

RESTRICTION

All tax maps created under the provisions of reappraisal legislation are the property of Upshur County West Virginia and the reproduction, copying, distribution or sale of such tax maps or any copies thereof without the written permission of the Upshur County Assessor is prohibited by law.

KEY MAP	
4F	4F
4F 9	4F
4F	4F

UPSHUR COUNTY
 STATE OF WEST VIRGINIA
 Office of Assessor

DISTRICT
 BUCKHANNON
 LORENTZ
 SHEET NO: 9
 Date, Aerial Photography: 4-24-62 Date, Map: 10-15-64
 Photo No: UP-5-75 Scale: 1" = 100'