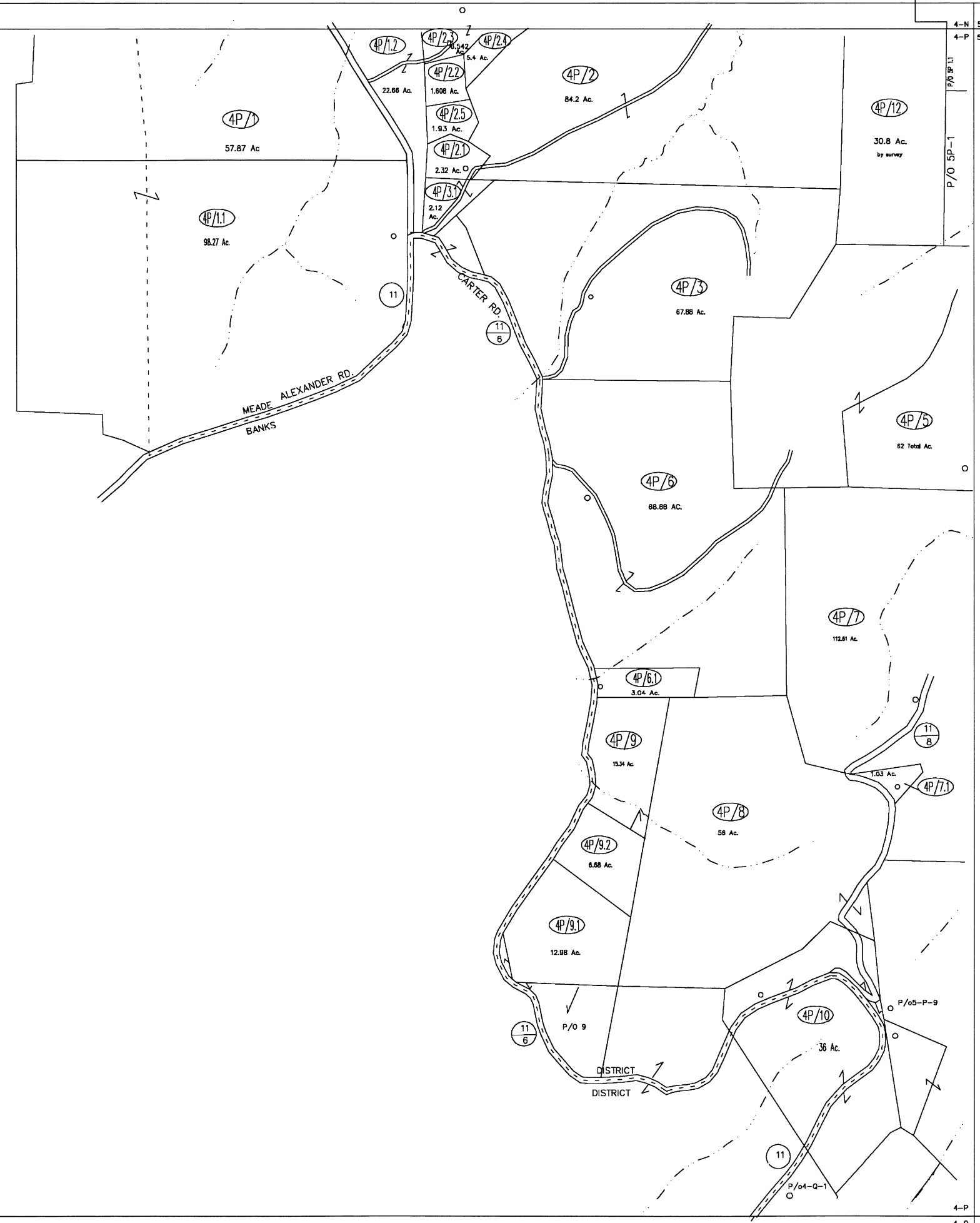


4-N
4-P

4-N
4-P

4-P
4-Q

4-P
4-Q



For Tax Purposes Only

Prepared by
Upshur County Assessor Office
 Helen R. Phillips : Assessor
 Donald W. Rice : Mapper

LEGEND	
Property line	-----
Edge of pavement or roadway	-----
Corporation line	-----
District line	-----
County line	-----
Original lot line	-----
Dead lot number	(15)
Parcel or index number	⊙
Improvement	○
Railroad	-----

REVISIONS	
1	03-05-98 DWR
2	01-30-2003 DWR
3	5/14/2006 HPM
4	8/1/2007 HPM
5	9/13/2007 HPM
6	3/5/2009 HPM
7	4/1/2009 HPM
8	

RESTRICTION

All tax maps created under the provisions of reappraisal legislation are the property of Upshur County West Virginia and the reproduction, copying, distribution or sale of such tax maps or any copies thereof without the written permission of the Upshur County Assessor is prohibited by law.

KEY MAP	
4N	5N
4P	5P
4Q	5Q

UPSHUR COUNTY
 STATE OF WEST VIRGINIA
 Office of Assessor

DISTRICT MEADE
 SHEET NO: 4-P
 Date, Aerial Photography: 4-24-62
 Photo No: UP-5-87
 Date, Map: 12-11-62
 Scale: 1"=400'