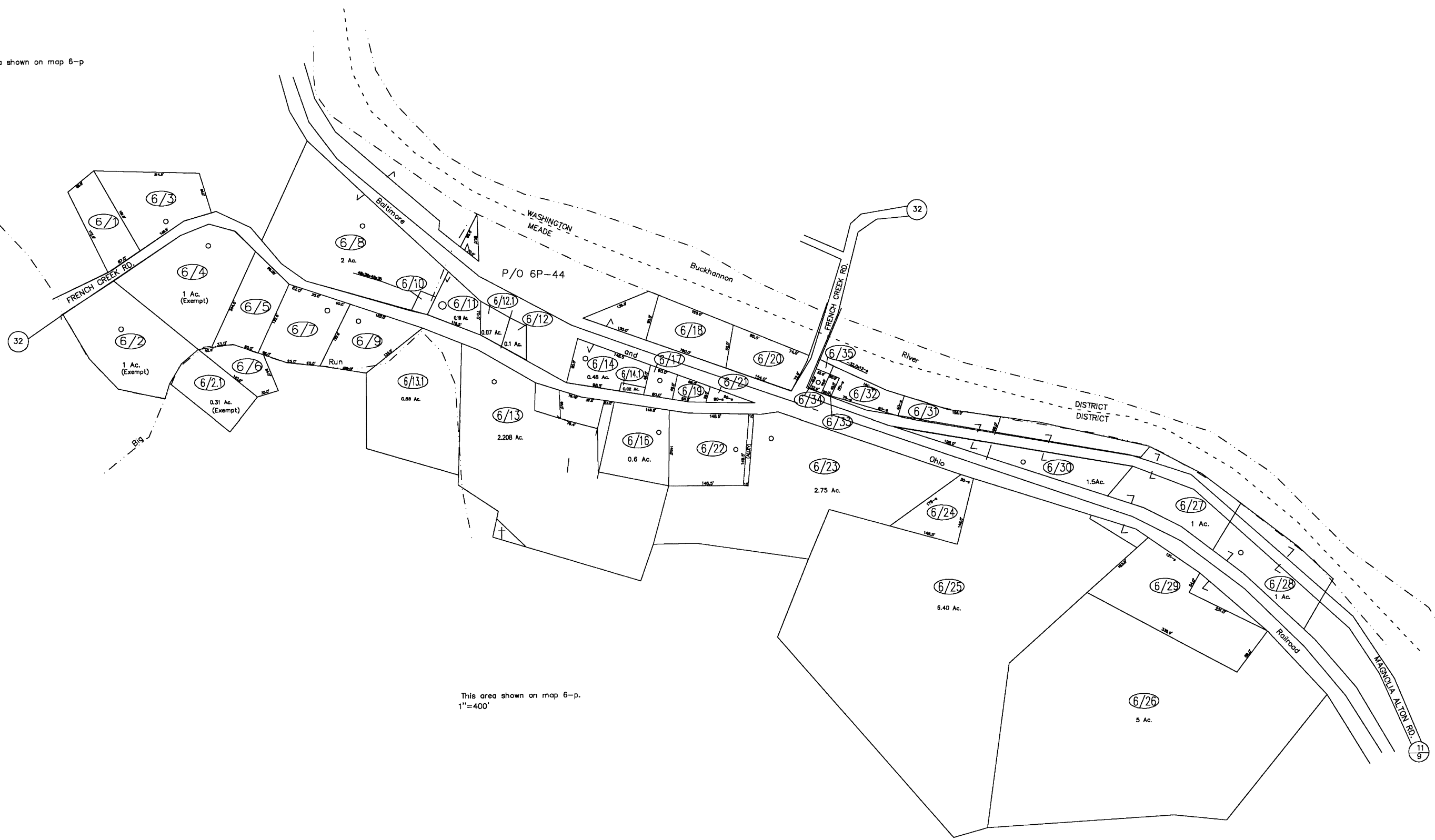


This area shown on map 6-p
1"=400'



This area shown on map 6-p.
1"=400'



For Tax Purposes Only
Prepared by
Upshur County Assessor Office
Helen R. Phillips : Assessor
Donald W. Rice : Mapper

LEGEND	
Property line	—
Edge of pavement or roadway	---
Corporation line	- - - -
District line	- - - - -
County line	- - - - -
Original lot line	- - - - -
Dead lot number	(15)
Parcel or Index number	⊙
Improvement	○
Railroad	—+—+—+—

REVISIONS	
1	6-29-2005 HPM
2	9/28/2005 HPM
3	5/28/2006 HPM
4	6/18/2006 HPM
5	3/17/2009 HPM
6	
7	
8	

RESTRICTION

All tax maps created under the provisions of reappraisal legislation are the property of Upshur County West Virginia and the reproduction, copying, distribution or sale of such tax maps or any copies thereof without the written permission of the Upshur County Assessor is prohibited by law.

KEY MAP	
6P	
6P6	
6P6P	

UPSHUR COUNTY
STATE OF WEST VIRGINIA
Office of Assessor

DISTRICT MEADE
ALTON
SHEET NO: 6
Date, Aerial Photography: April 5, 1962
Photo No: UP-3-40
Date, Map: 8/19/64
Scale: 1" = 100'