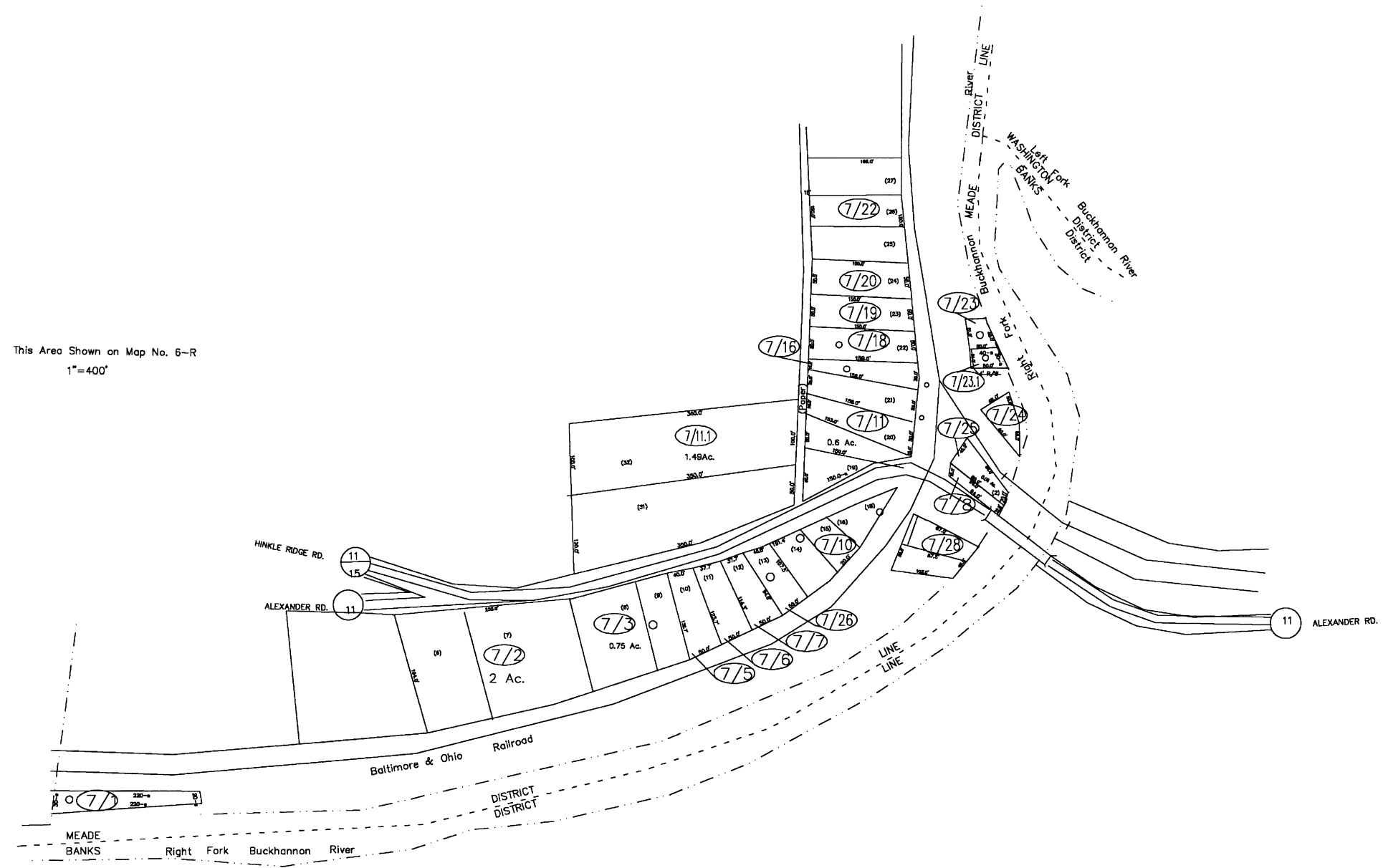


This Area Shown on Map No. 6-R
1"=400'



For Tax Purposes Only
Prepared by
Upshur County Assessor Office
Helen R. Phillips : Assessor
Donald W. Rice : Mapper

LEGEND	
Property line	—
Edge of pavement or roadway	—
Corporation line	—
District line	—
County line	—
Original lot line	— (15)
Dead lot number	(15)
Period or index number	99
Improvement	○
Railroad	—

REVISIONS	
1	03-05-98 DWR
2	8/4/2008 HPM
3	3/17/2009 HPM
4	
5	
6	
7	
8	

RESTRICTION

All tax maps created under the provisions of reappraisal legislation are the property of Upshur County West Virginia and the reproduction, copying, distribution or sale of such tax maps or any copies thereof without the written permission of the Upshur County Assessor is prohibited by law.

KEY MAP	
5R	6R
7	8R

UPSHUR COUNTY
STATE OF WEST VIRGINIA
Office of Assessor

DISTRICT MEADE ALEXANDER	
SHEET NO: 7	
Date, Aerial Photography: 4-25-62 Photo No: UP-3-50	Date, Map: 8-31-64 Scale: 1" = 100'