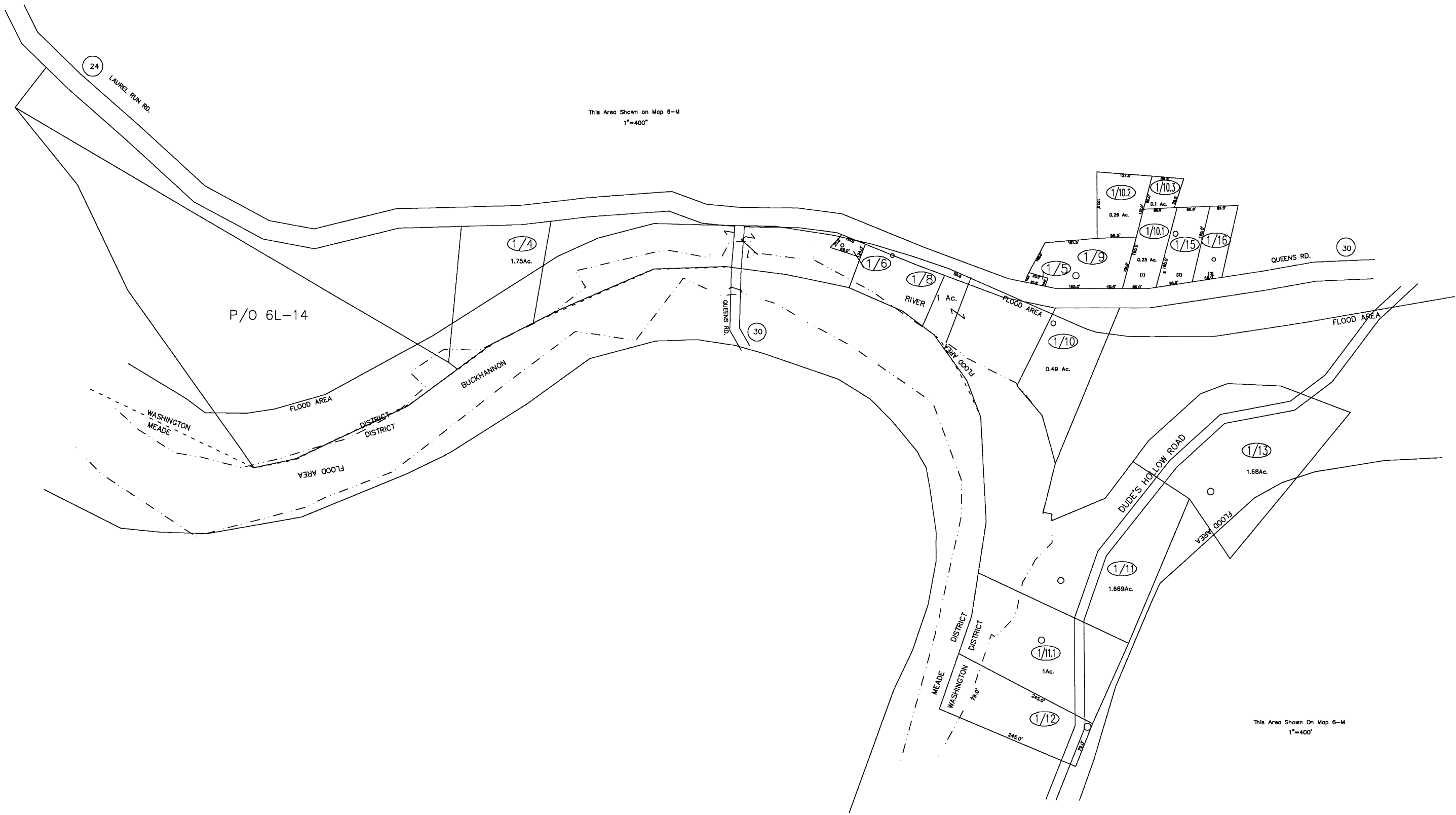


This Area Shown on Map 6-M
1"=400'

This Area Shown on Map 6-M
1"=400'



For Tax Purposes Only
Prepared by
Upshur County Assessor Office
Helen R. Phillips : Assessor
Donald W. Rice : Mapper

LEGEND

Property line	—————	Original lot line	-----
Edge of pavement or roadway	-----	Dead lot number	(15)
Corporation line	-----	Parcel or index number	Ⓣ
District line	-----	Improvement	o
County line	-----	Railroad	—+—+—+—

REVISIONS

1	12-22-98	DWR
2	10-30-2000	DWR
3	04-07-2004	DWR
4	9/16/2005	HPM
5	4/20/2007	HPM
6	5/21/2007	HPM
7	3/5/2009	HPM
8		

RESTRICTION

All tax maps created under the provisions of reappraisal legislation are the property of Upshur County West Virginia and the reproduction, copying, distribution or sale of such tax maps or any copies thereof without the written permission of the Upshur County Assessor is prohibited by law.

KEY MAP

6L	6M	6N
6M	01	6M
6M	6M	6M

UPSHUR COUNTY
STATE OF WEST VIRGINIA
Office of Assessor

DISTRICT WASHINGTON
TENMILE
SHEET NO: 1

Date, Aerial Photography: APRIL, 5, 1962
Photo No: UP-3-38
Date, Map: 8-19-64
Scale: 1" = 100'