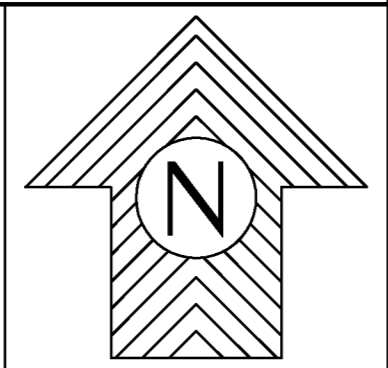


THIS IS A TAX MAP, NOT A SURVEY MAP.
 This map was compiled from existing surveys & record documents for **TAXATION PURPOSES ONLY**. The lines and features shown hereon have not been field verified and should not be relied upon to determine the actual true location of any boundary or other feature. The Wayne County Assessor's Office assumes no liability for the improper use of this document, the accuracy or placement of any parcel or other information depicted hereon, or lack thereof.
 SCALE: 1" = 100'

LEGEND	
PROPERTY LINE	PROPERTY SURVEY (S)
ORIGINAL LOT LINE, TRACT LINE	CALCULATED ACREAGE (C)
ROAD, PAVED WIDTH	DEED LOT NUMBER (10)
CORPORATION LINE	PARCEL NUMBER (0)
DISTRICT LINE	RAILROAD
COUNTY LINE	COTERMINOUS PARCEL

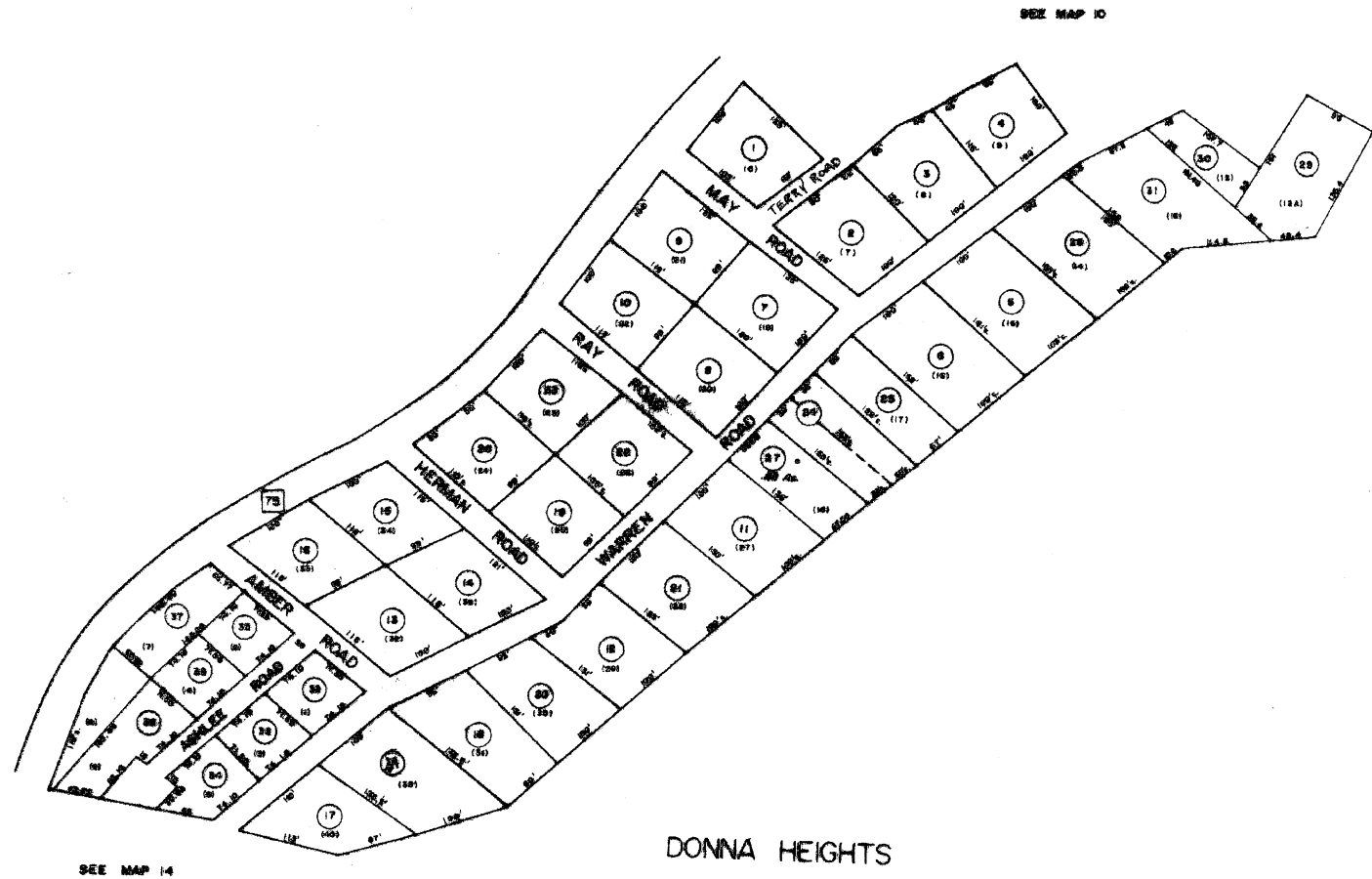


SHEET INDEX		
9	10A	10B
9	10E	10F
9	10J	10K

REVISIONS & NOTES	
CREATED 7-1-83	
REBUILD JAN 2011	
PROJECTION: WVSPC-SOUTH (FEET)- (NAD83)	
LAST UPDATE: 1-27-2011- MMS	(PARCELS CURRENT: 2010 L.B.)

WAYNE COUNTY, WV
 Office of Assessor
 FOR TAX PURPOSES ONLY

CEREDO DISTRICT
MAP 10E
AERIAL PHOTOGRAPHY; 2003 WVSAMB, PANEL(S): SB-07-24, SB-08-04



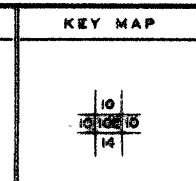
For Tax Purposes Only
 Prepared by
 LOCAL GOVERNMENT RELATIONS DIV.
 STATE TAX COMMISSIONER
 CHARLESTON, W.VA.

LEGEND	
Property line	Original lot line
Edge of pavement or roadway	Dead lot number
Cooperation line	Parcel or index number
District line	Improvement
County line	Refused

REVISIONS	
1	PERMYRE, INC. 7-1-88
2	7-1-88 S.P.H.
3	
4	
5	
6	
7	
8	

RESTRICTION

All tax maps created under the provisions of reapportionment legislation are the property of the State of West Virginia and the reproduction, copying, distribution or sale of such tax maps or any copies thereof without the written permission of the State Tax Commissioner is prohibited by law.



WAYNE COUNTY
 Office of Assessor
 FOR TAX PURPOSES ONLY

DISTRICT	CEREDO
SHEET NO:	10E
Data, Aerial Photography: Photo No:	Data, Map: Scale: 1" = 100'