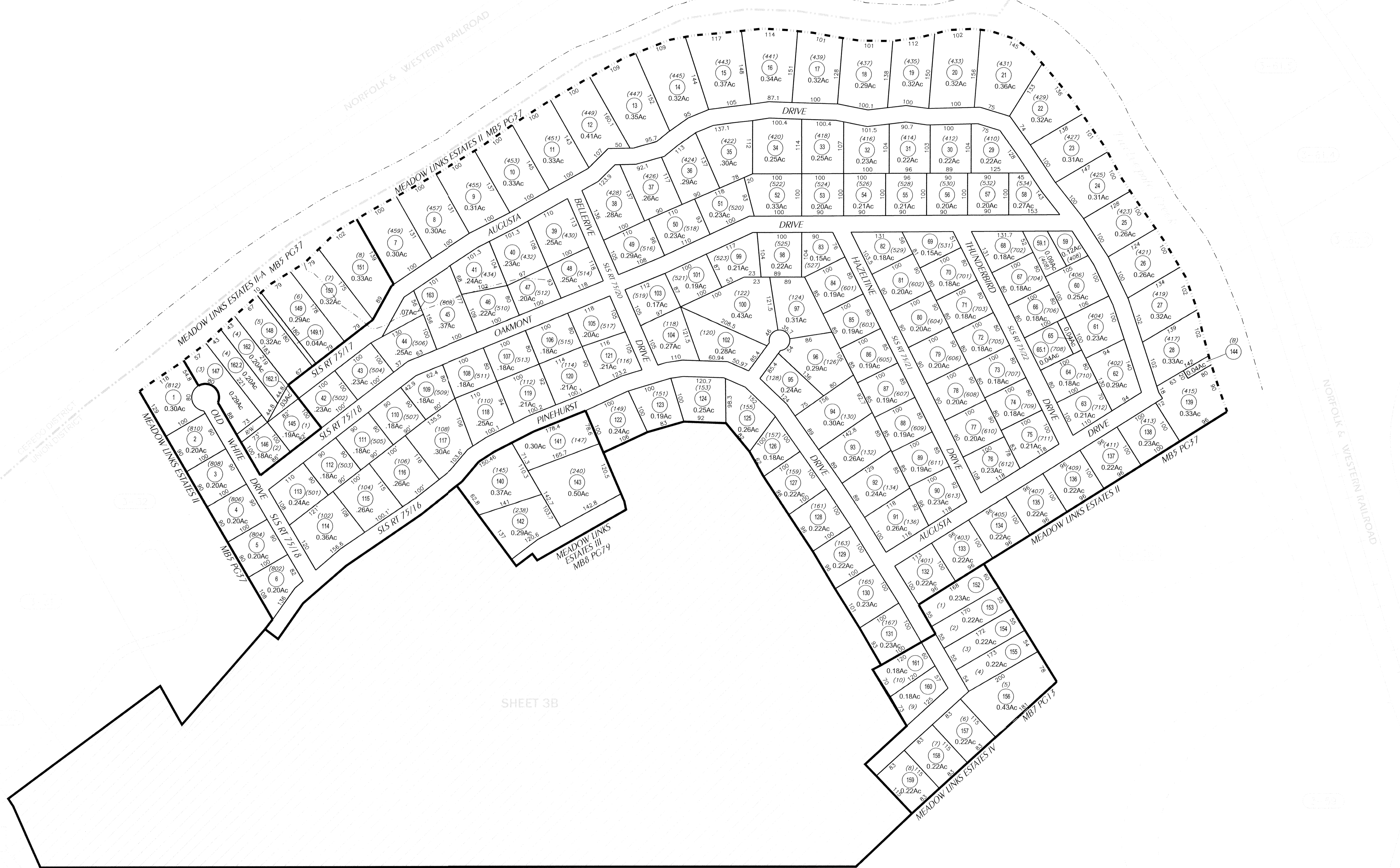


CEREDO DISTRICT SHEET 14



THIS IS A TAX MAP, NOT A SURVEY MAP.
 This map was compiled from existing surveys & record documents for **TAXATION PURPOSES ONLY**. The lines and features shown hereon have not been field verified and should not be relied upon to determine the actual true location of any boundary or other feature. The Wayne County Assessor's Office assumes no liability for the improper use of this document, the accuracy or placement of any parcel or other information depicted hereon, or lack thereof.

SCALE 1"=100'

LEGEND	
PROPERTY LINE	—
ORIGINAL LOT LINE, TRACT LINE	- - - - -
ROAD, PAVED WIDTH	—+—+—+—
CORPORATION LINE	—+—+—+—
DISTRICT LINE	- - - - -
COUNTY LINE	—+—+—+—
PROPERTY SURVEY (S)	(S)
CALCULATED ACREAGE (C)	(C)
DEED LOT NUMBER	(10)
PARCEL NUMBER	(0)
RAILROAD	—+—+—+—
COTERMINOUS PARCEL	—+—+—+—

SHEET INDEX		
3		3
3	3C	3
3	3B	3

REVISIONS & NOTES	
REBUILT: APRIL 2006	
PROJECTION: WVSPC-SOUTH (FEET)- (NAD83)	
LAST UPDATE: 10-26-07-MMS	(PARCELS CURRENT: 2007 L.B.)

WAYNE COUNTY, WV
 Office of Assessor

FOR TAX PURPOSES ONLY

UNION DISTRICT
 MAP 3C

AERIAL PHOTOGRAPHY; 2003 WVSAMB, PANEL(S): S-08-05, S-08-10