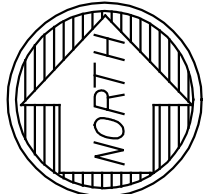
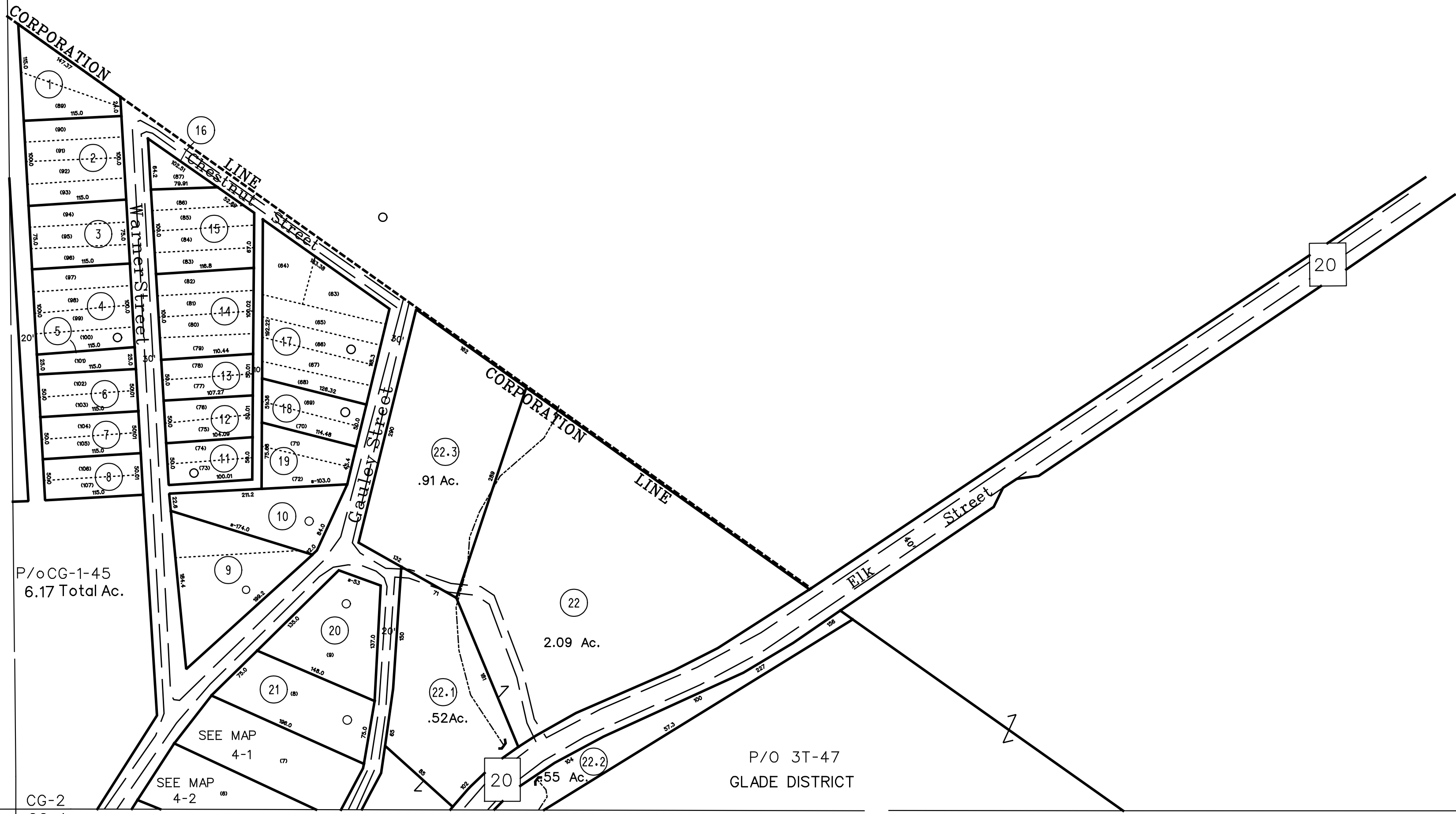


This Area Shown on Map 3-T
1" = 400'



For Tax Purposes Only
Prepared by
Max Cochran - Assessor
2 Court Square
Webster Springs, WV 26288

LEGEND	
Property line	---
Edge of pavement or roadway	---
Corporation line	---
District line	---
County line	---
Original lot line	---
Deed lot number	(15)
Parcel or index number	99
Improvement	o
Railroad	+

REVISIONS	
1	
2	
3	
4	
5	
6	
7	
8	

RESTRICTION	
All tax maps created under the provisions of reappraisal legislation are the property of the Assessor of Webster County, West Virginia and the reproduction, copying, modification, distribution or sale of such tax maps or any copies thereof without the written permission of the Webster County Assessor is prohibited by law	

KEY MAP	

WEBSTER COUNTY	
STATE OF WEST VIRGINIA	
Office of Assessor	

DISTRICT	
CAMDEN ON GAULEY	
SHEET NO: CG2	
Date, Aerial Photography: 4-14-60 Photo No: WECG-12-106	Date, Map: 4-13-62 Scale: 1" = 100'