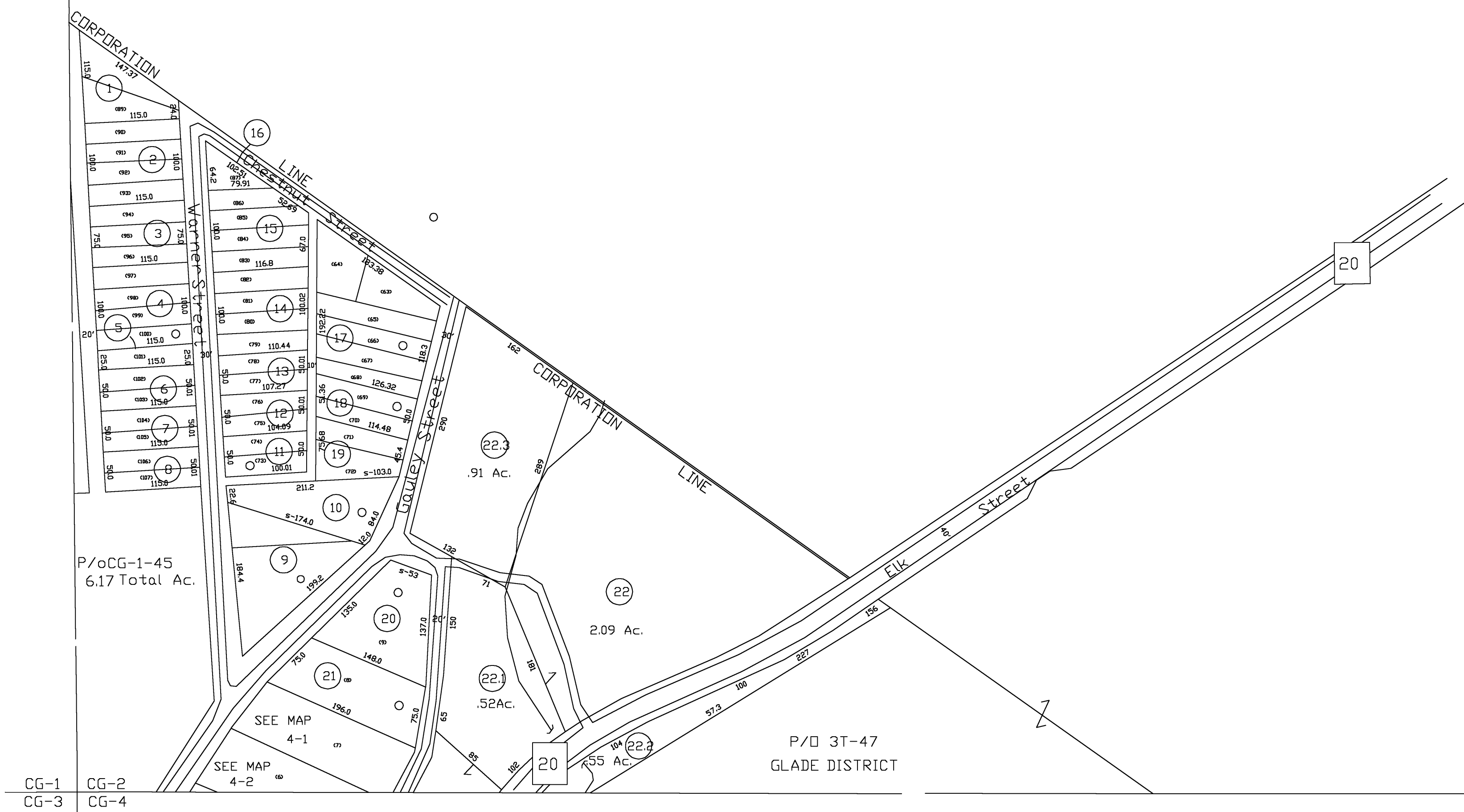


This Area Shown on Map 3-T  
1" = 400'



For Tax Purposes Only  
Prepared by  
Dana Lynch, Assessor  
Webster County

LEGEND

Property line	---	Original lot line	---
Edge of pavement or roadway	---	Deed lot number	(15)
Corporation line	---	Parcel or index number	(60)
District line	---	Improvement	o
County line	---	Railroad	+

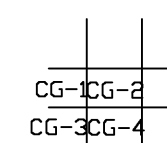
REVISIONS

1	
2	
3	
4	
5	
6	
7	
8	

RESTRICTION

All tax maps created under the provisions of reappraisal legislation are the property of the Assessor of Webster County, West Virginia and the reproduction, copying, modification, distribution or sale of such tax maps or any copies thereof without the written permission of the Webster County Assessor is prohibited by law

KEY MAP



**WEBSTER COUNTY**  
STATE OF WEST VIRGINIA  
Office of Assessor

DISTRICT

CAMDEN ON GAULEY

SHEET NO: CG2

Date, Aerial Photography: 4-14-60  
Photo No: WECG-12-106

Date, Map: 4-13-62  
Scale: 1" = 100'