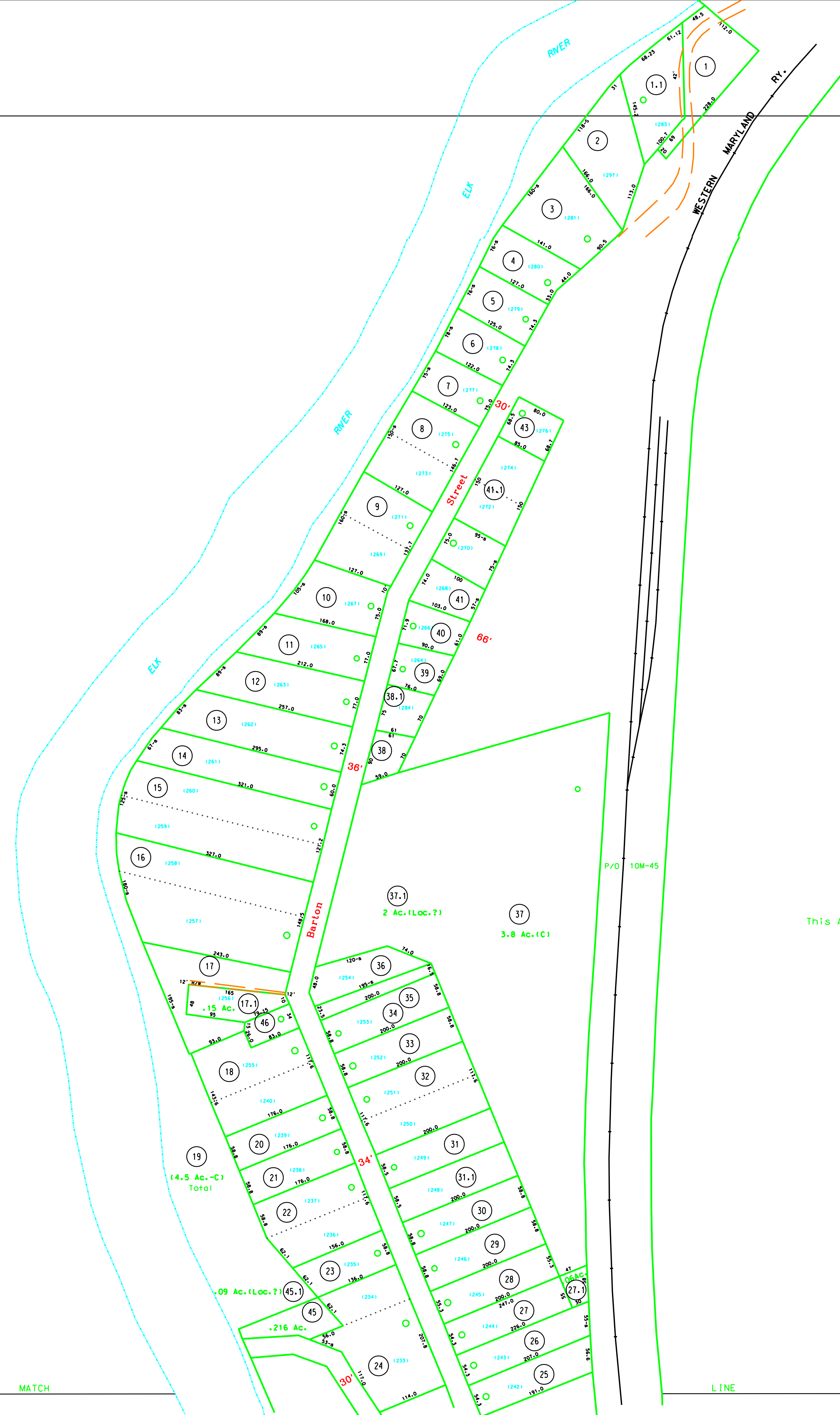


This Area Shown on Map 9-N
1" = 400'

This Area Shown on Map 9-N
1" = 400'



FD-11
FD-12

FD-11
FD-12

LEGEND	
Property line	—————
Edge of pavement or roadway	———
Corporation line	-----
District line	- - - - -
County line	_____
Original lot line	-----
Deed lot number	(15)
Parcel or index number	⊙
Improvement	⊙
Roadway	———

REVISIONS	
1	9/13/72 DNP
2	11-26-80 DF
3	7-1-82 DF
4	7-1-87 NCS
5	7-1-89 REB
6	6-1-2013 HDM
7	11-9-2016 HDM
8	

RESTRICTION

All tax maps created under the provisions of reappraisal legislation are the property of the Assessor of Webster County, West Virginia and the reproduction, copying, modification, distribution or sale of such tax maps or any copies thereof without the written permission of the Webster County Assessor is prohibited by law

KEY MAP	
FD11	FD12

WEBSTER COUNTY
STATE OF WEST VIRGINIA
Office of Assessor

DISTRICT FORK LICK
TOWN OF CURTIN
SHEET NO: FD-11
Date, Aerial Photography: 4-23-60
Photo No: WE-22-95
Date, Map: 7-9-63
Scale: 1" = 100'

For Tax Purposes Only
Prepared by
Max Cochran - Assessor
2 Court Square
Webster Springs, WV 26288