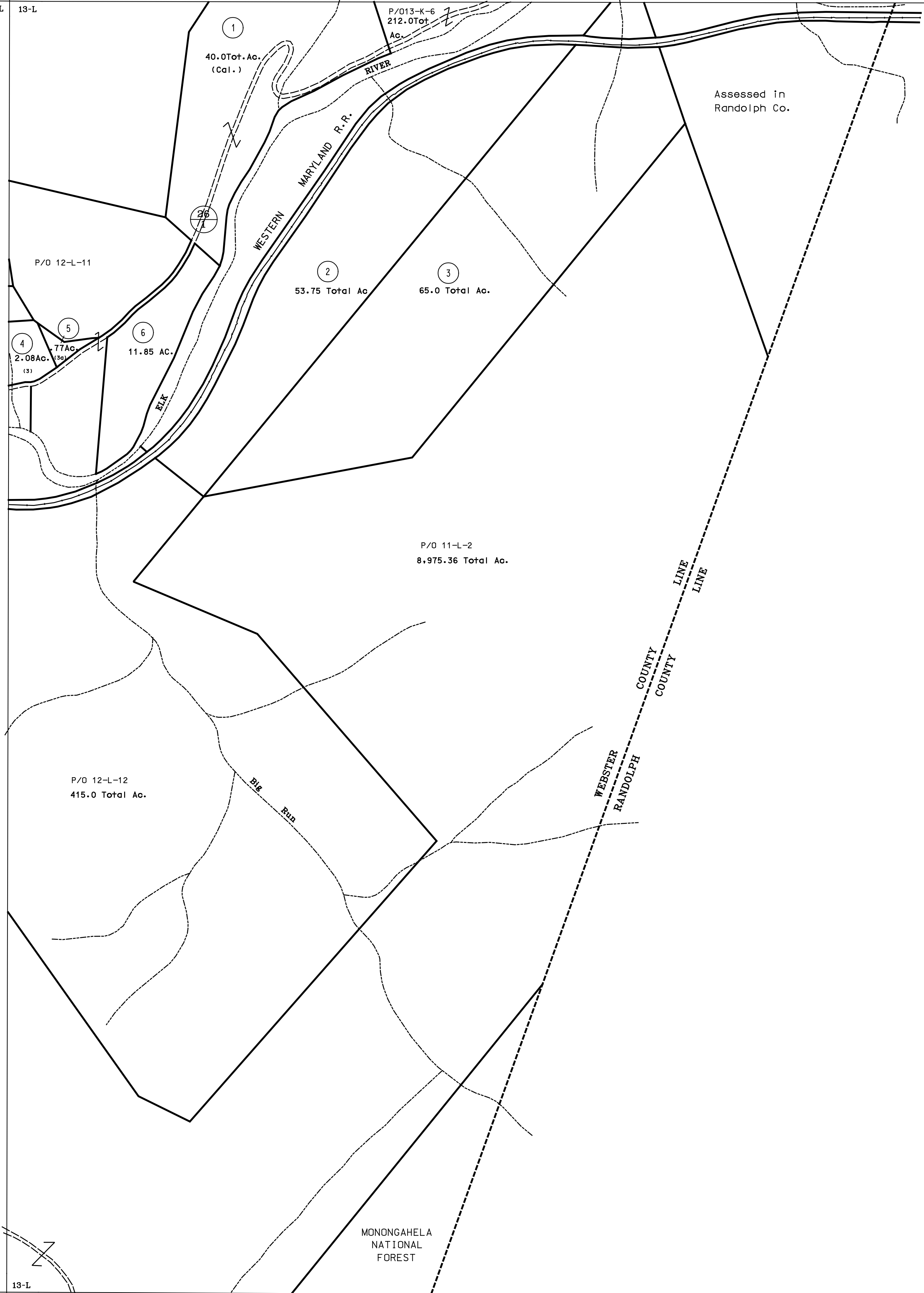


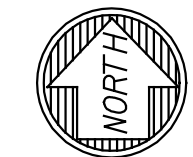
12-K
12-L

13-K
13-L



12-L
12-M

13-L
13-M



For Tax Purposes Only

Prepared by
Max Cochran - Assessor
2 Court Square
Webster Springs, WV 26288

LEGEND	
Property line	—————
Edge of pavement or roadway	- - - - -
Corporation line	-----
District line	-----
County line	-----
Original lot line	----- (15)
Deed lot number	⑨
Parcel or index number	⑨
Improvement	o
Railroad	—+—

REVISIONS	
1	7-1-89 REB
2	1-93 AM
3	5-28-2013 HM
4	
5	
6	
7	
8	

RESTRICTION

All tax maps created under the provisions of reappraisal legislation are the property of the Assessor of Webster County, West Virginia and the reproduction, copying, modification, distribution or sale of such tax maps or any copies thereof without the written permission of the Webster County Assessor is prohibited by law

KEY MAP	
12K	13K
12L	13L
12M	13M

WEBSTER COUNTY

STATE OF WEST VIRGINIA

Office of Assessor

DISTRICT

FORK LICK

SHEET NO: 13L

Date, Aerial Photography: 4-23-60
Photo No: WE-22-43

Date, Map: 10-26-62
Scale: 1" = 400'