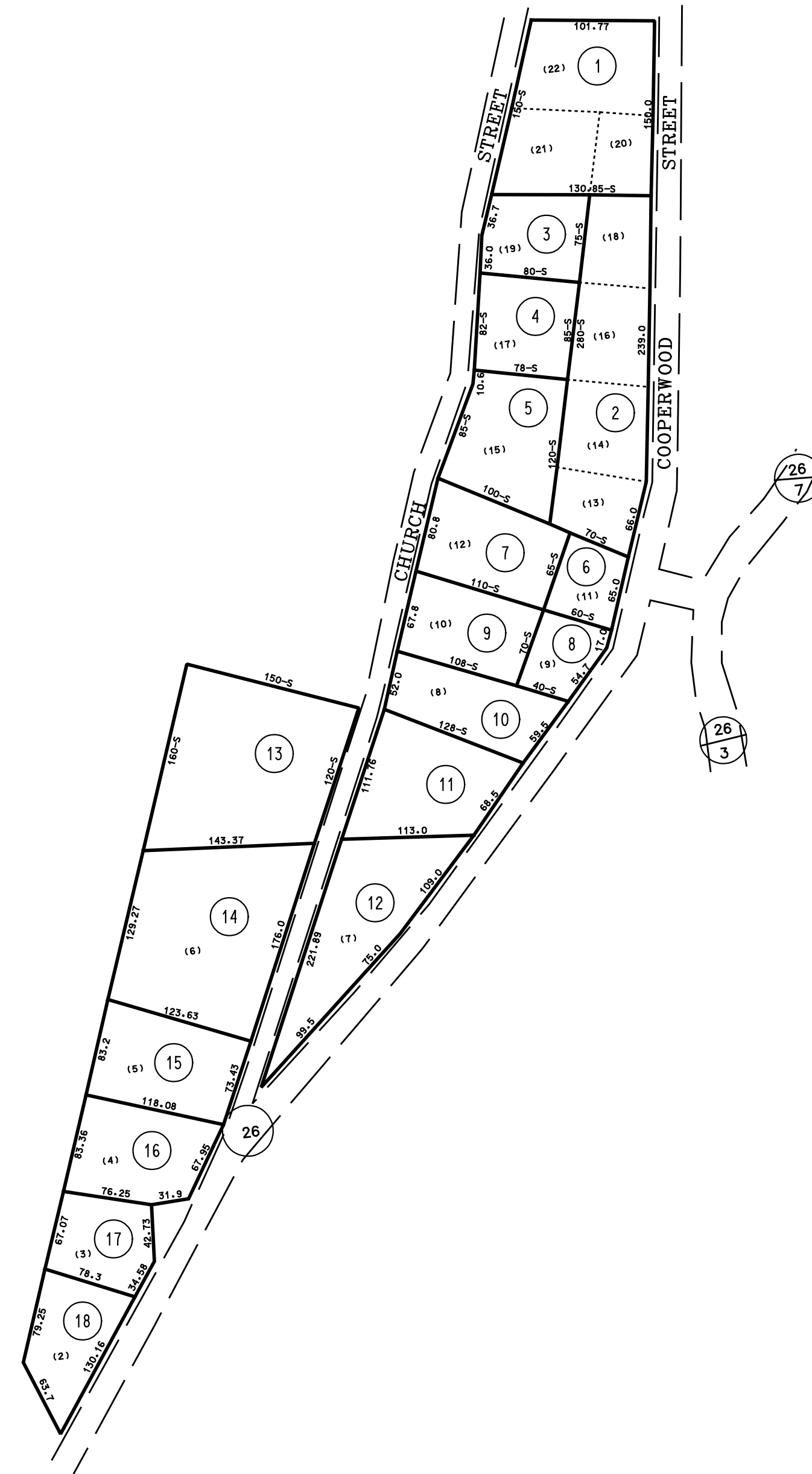
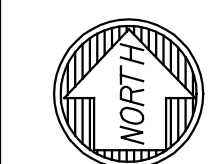


This Area Shown on Map 10-M
1" = 400'



This Area Shown on Map 10-M
1" = 400'



For Tax Purposes Only

Prepared by
Max Cochran - Assessor
2 Court Square
Webster Springs, WV 26288

LEGEND

Property line	—————	Original lot line	-----
Edge of pavement or roadway	— — — — —	Deed lot number	(15)
Corporation line	-----	Parcel or index number	Ⓣ
District line	-----	Improvement	o
County line	-----	Railroad	+++++

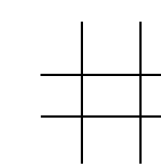
REVISIONS

1	9/13/72	DNP
2	11-26-80	DF
3	7-1-82	DF
4	7-1-87	NCS
5	7-1-89	REB
6	6-1-2013	HDM
7		
8		

RESTRICTION

All tax maps created under the provisions of reappraisal legislation are the property of the Assessor of Webster County, West Virginia and the reproduction, copying, modification, distribution or sale of such tax maps or any copies thereof without the written permission of the Webster County Assessor is prohibited by law

KEY MAP



WEBSTER COUNTY

STATE OF WEST VIRGINIA

Office of Assessor

DISTRICT FORK LICK
VORISHIE & SCHREINER
SUB-DIV.

SHEET NO: FD-16

Date, Aerial Photography: 4-23-60
Photo No: WE-22-96

Date, Map: 4-14-64
Scale: 1" = 100'