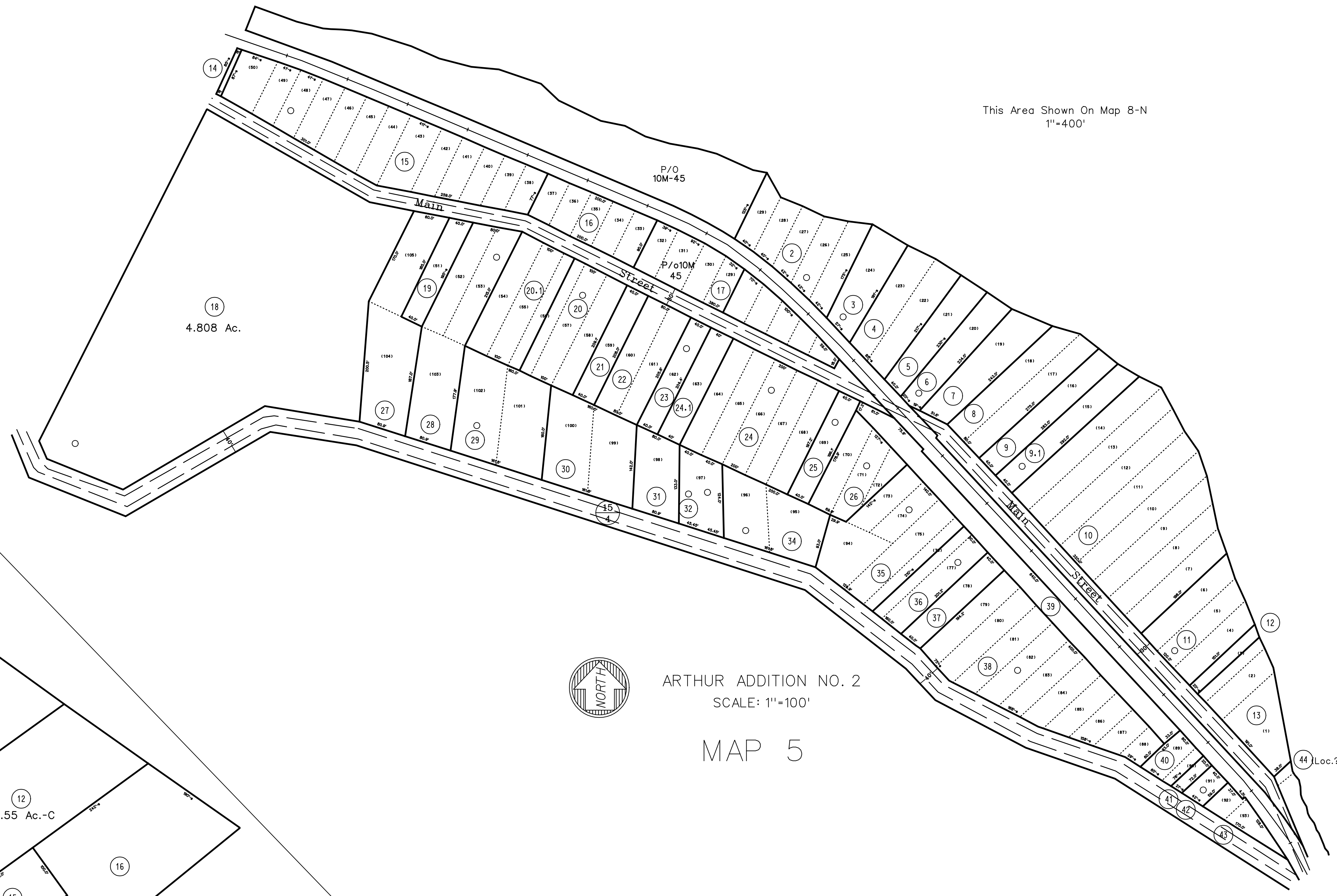
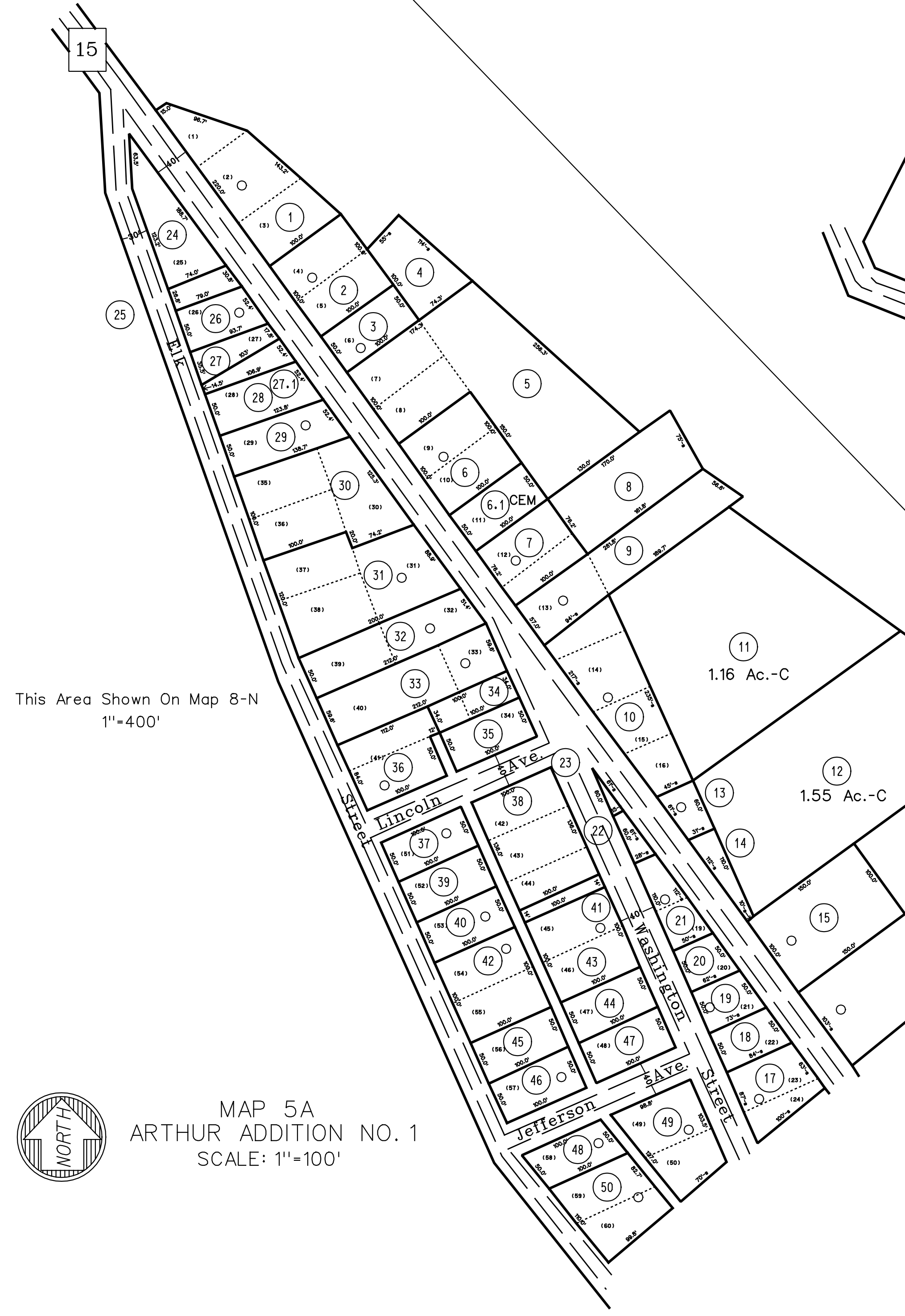


This Area Shown On Map 8-N
1"=400'



ARTHUR ADDITION NO. 2
SCALE: 1"=100'

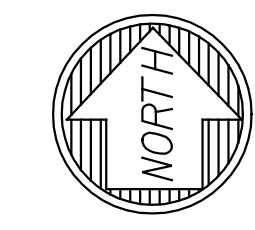
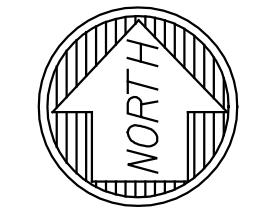
MAP 5



This Area Shown On Map 8-N
1"=400'

MAP 5A
ARTHUR ADDITION NO. 1
SCALE: 1"=100'

MAP 5A



For Tax Purposes Only
Prepared by
Max Cochran - Assessor
2 Court Square
Webster Springs, WV 26288

LEGEND	
Property line	———
Edge of pavement or roadway	———
Corporation line	———
District line	———
County line	———
Original lot line	——— (15)
Deed lot number	Ⓣ
Parcel or Index number	Ⓣ
Improvement	○
Railroad	———

REVISIONS	
1	9/13/72 DNP
2	11-26-80 DF
3	7-1-82 DF
4	7-1-87 NCS
5	7-1-89 REB
6	6-1-2013 HDM
7	
8	

RESTRICTION

All tax maps created under the provisions of reappraisal legislation are the property of the Assessor of Webster County, West Virginia and the reproduction, copying, modification, distribution or sale of such tax maps or any copies thereof without the written permission of the Webster County Assessor is prohibited by law

KEY MAP

WEBSTER COUNTY
STATE OF WEST VIRGINIA
Office of Assessor

DISTRICT
FORK LICK
SHEET NO: FD-5 & 5A
Date, Aerial Photography: 4-23-60
Photo No: WE-22-149
Date, Map: 8-27-62
Scale: 1" = 100'