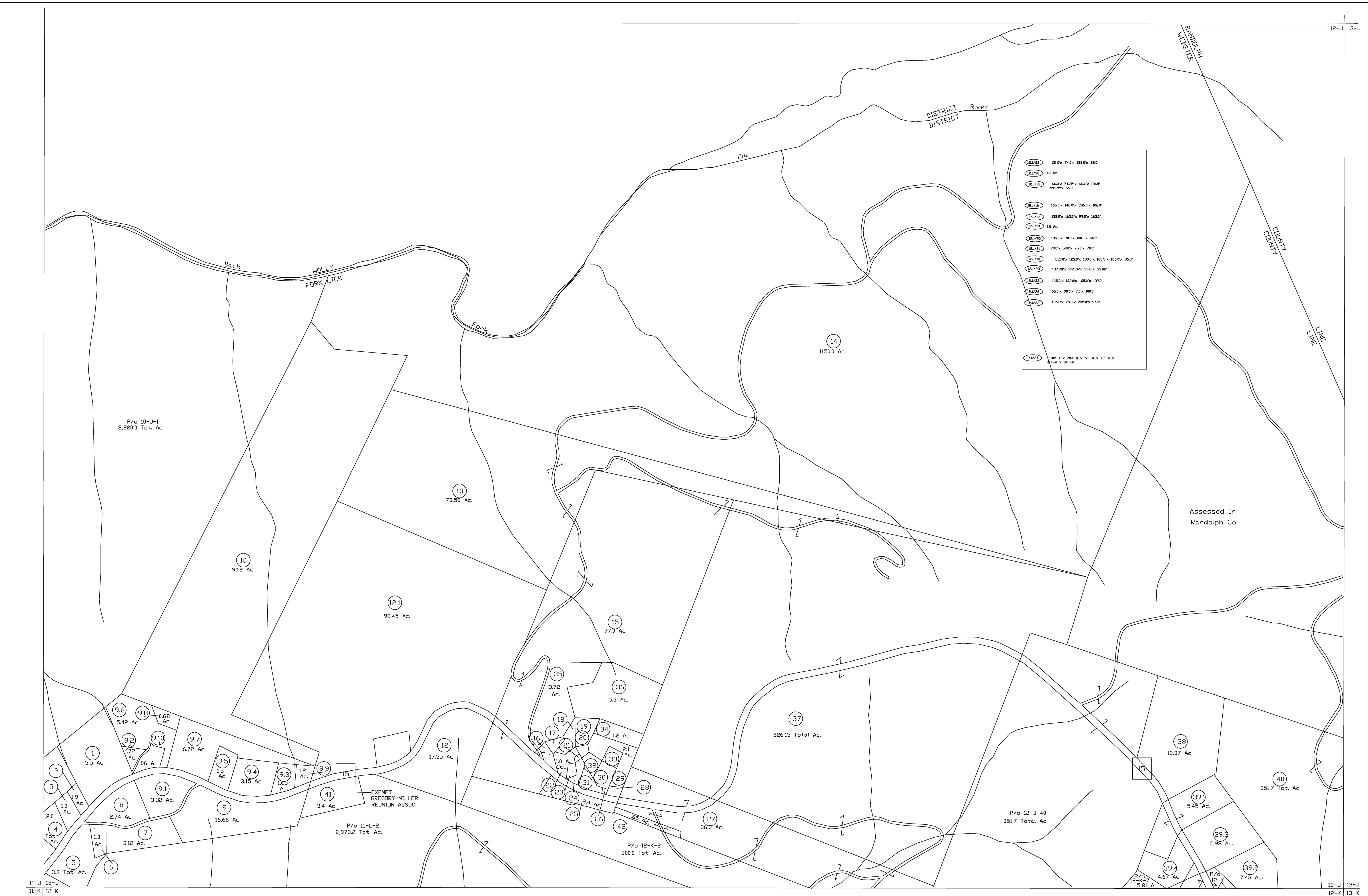


| | |
|---------|---|
| 12-J/28 | 131.0' x 74.0' x 138.0' x 88.0' |
| 12-J/29 | 1.0 Ac. |
| 12-J/30 | 66.0' x 74.0' x 66.0' x 181.0' |
| | 828.7' x 164.0' |
| 12-J/31 | 165.0' x 142.0' x 286.0' x 106.0' |
| 12-J/32 | 132.0' x 165.0' x 99.0' x 165.0' |
| 12-J/33 | 1.0 Ac. |
| 12-J/34 | 135.0' x 70.0' x 100.0' x 50.0' |
| 12-J/35 | 70.0' x 50.0' x 75.0' x 70.0' |
| 12-J/36 | 280.0' x 153.0' x 199.0' x 163.0' x 186.0' x 96.0' |
| 12-J/37 | 137.2' x 102.2' x 95.2' x 93.8' x 92.8' |
| 12-J/38 | 165.0' x 138.0' x 165.0' x 138.0' |
| 12-J/39 | 66.0' x 90.0' x 7.0' x 100.0' |
| 12-J/40 | 183.0' x 79.0' x 235.0' x 93.0' |
| 12-J/41 | 100'-0" x 200'-0" x 50'-0" x 70'-0" x 100'-0" x 100'-0" |



Assessed In Randolph Co.

EXEMPT GREGORY-MILLER REUNION ASSOC.

P/o 11-L-2 8,973.2 Tot. Ac.

P/o 12-K-2 200.0 Tot. Ac.

P/o 12-J-40 351.7 Total Ac.

11-J 12-J 11-K 12-K

12-J 13-J 12-K 13-K

For Tax Purposes Only

Prepared by
Dana Lynch, Assessor
Webster County

| LEGEND | |
|-----------------------------|---------|
| Property line | ————— |
| Edge of pavement or roadway | ----- |
| Corporation line | ----- |
| District line | ----- |
| County line | ----- |
| Original lot line | ----- |
| Deed lot number | (15) |
| Parcel or index number | (99) |
| Improvement | o |
| Railroad | —+—+—+— |

| REVISIONS | |
|-----------|--|
| 1 | |
| 2 | |
| 3 | |
| 4 | |
| 5 | |
| 6 | |
| 7 | |
| 8 | |

RESTRICTION

All tax maps created under the provisions of reappraisal legislation are the property of the Assessor of Webster County, West Virginia and the reproduction, copying, modification, distribution or sale of such tax maps or any copies thereof without the written permission of the Webster County Assessor is prohibited by law

KEY MAP

WEBSTER COUNTY

STATE OF WEST VIRGINIA

Office of Assessor

DISTRICT FORK LICK

SHEET NO: 12-J

Date, Aerial Photography: 4-23-60
Photo No: WE-22-57

Date, Map
Scale: 1"=