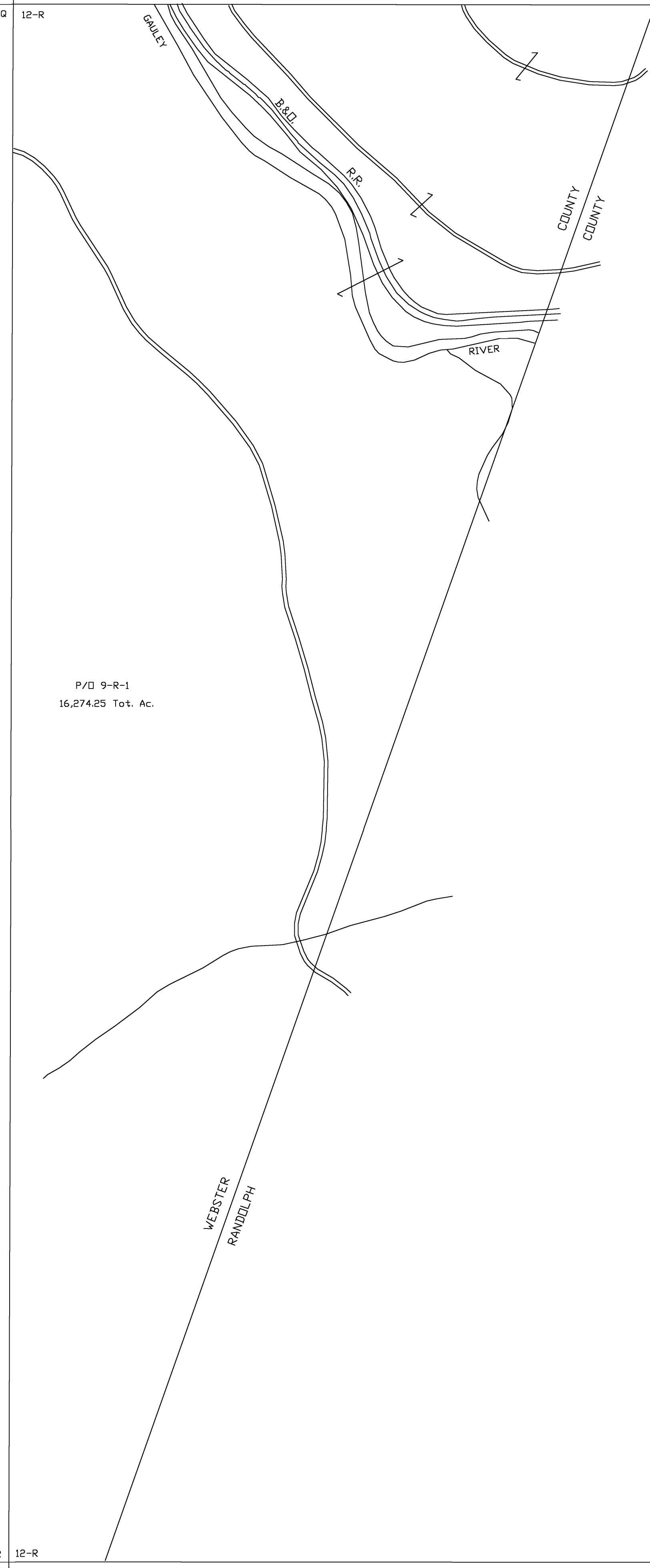
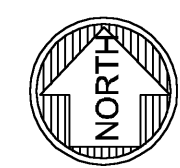


11-Q 12-Q  
11-Q 12-R



11-R 12-R  
11-S



**For Tax Purposes Only**  
 Prepared by  
**Dana Lynch, Assessor**  
 Webster County

**LEGEND**

Property line	—————	Original lot line	- - - - -
Edge of pavement or roadway	- - - - -	Deed lot number	(15)
Corporation line	- - - - -	Parcel or index number	Ⓢ
District line	- - - - -	Improvement	o
County line	- - - - -	Railroad	+ + + + +

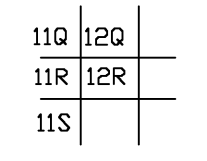
**REVISIONS**

1	
2	
3	
4	
5	
6	
7	
8	

**RESTRICTION**

All tax maps created under the provisions of reappraisal legislation are the property of the Assessor of Webster County, West Virginia and the reproduction, copying, modification, distribution or sale of such tax maps or any copies thereof without the written permission of the Webster County Assessor is prohibited by law

**KEY MAP**



**WEBSTER COUNTY**  
 STATE OF WEST VIRGINIA  
 Office of Assessor

DISTRICT **FORK LICK**  
**SHEET NO: 12-R**

Date, Aerial Photography: 4-23-60 Date, Map:  
 Photo No: WE-22-84 Scale: 1"=