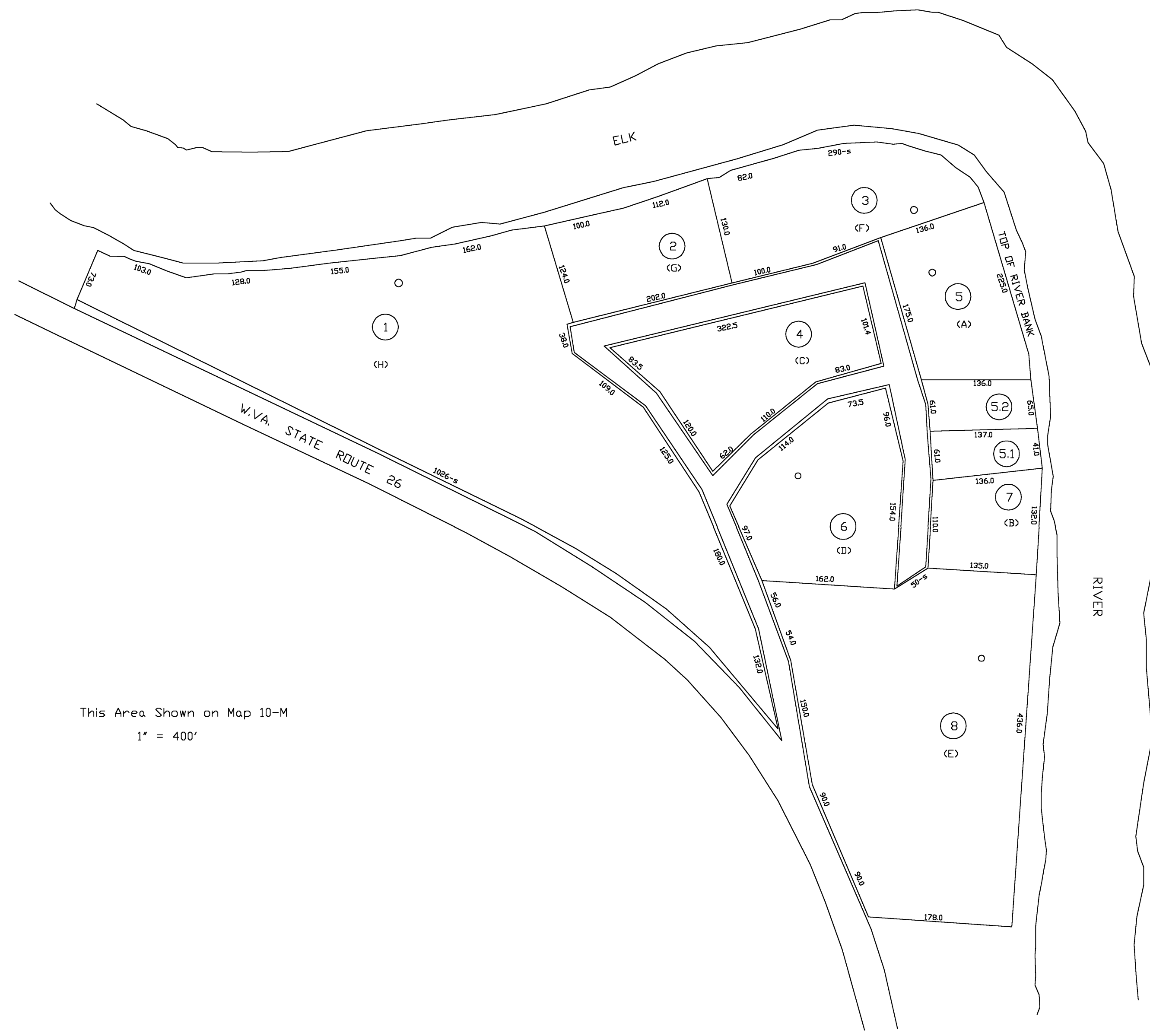
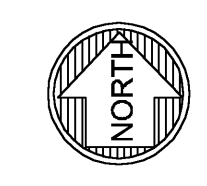


This Area Shown on Map 10-M  
1" = 400'



This Area Shown on Map 10-M  
1" = 400'



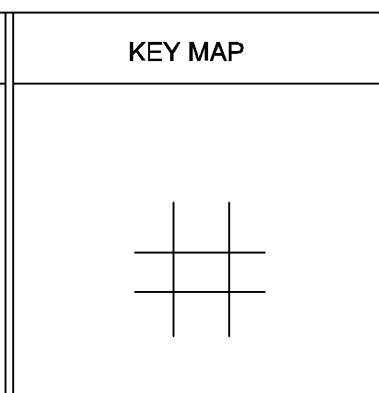
For Tax Purposes Only  
Prepared by  
Dana Lynch, Assessor  
Webster County

LEGEND	
Property line	—————
Edge of pavement or roadway	- - - - -
Corporation line	- · - · -
District line	- - - - -
County line	- - - - -
Original lot line	- - - - -
Deed lot number	(15)
Parcel or index number	(16)
Improvement	○
Railroad	—+—+—+—

REVISIONS
1
2
3
4
5
6
7
8

RESTRICTION

All tax maps created under the provisions of reappraisal legislation are the property of the Assessor of Webster County, West Virginia and the reproduction, copying, modification, distribution or sale of such tax maps or any copies thereof without the written permission of the Webster County Assessor is prohibited by law



**WEBSTER COUNTY**  
STATE OF WEST VIRGINIA  
Office of Assessor

DISTRICT FORK LICK  
JO-BOTTOM SUBDIVISION  
SHEET NO: FD-19

Date, Aerial Photography: 4-23-60  
Photo No: we-22-96

Date, Map: 4-14-64  
Scale: 1" = 100'