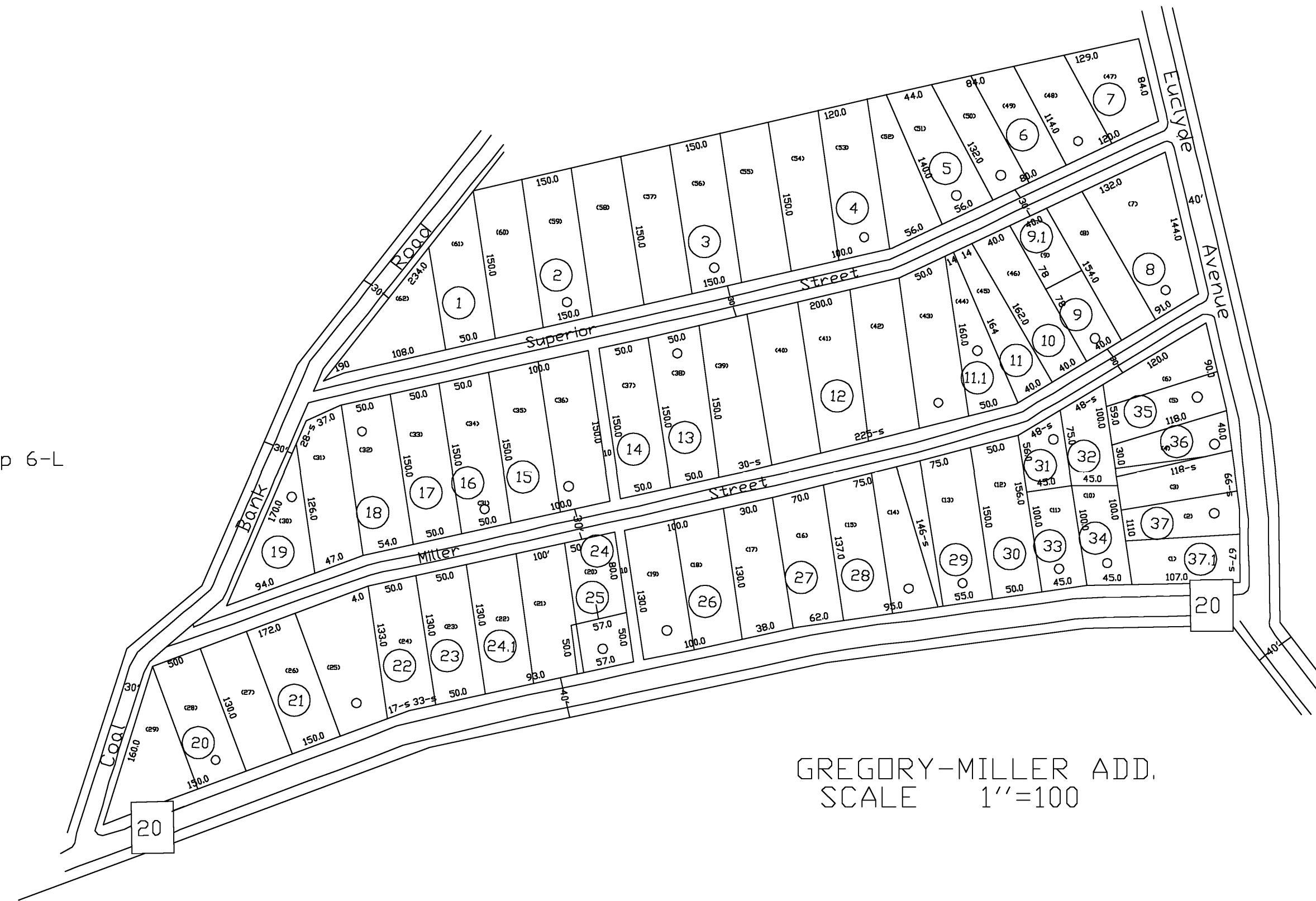


This Area Shown on Map 8-M
1"=400'

This Area Shown on Map 6-L
1"=400'

This Area Shown on Map 8-m
1"=400'



GREGORY-MILLER ADD.
SCALE 1"=100'



For Tax Purposes Only

Prepared by
Dana Lynch, Assessor
Webster County

LEGEND

Property line	—————	Original lot line	-----
Edge of pavement or roadway	-----	Deed lot number	(15)
Corporation line	-----	Parcel or index number	99
District line	-----	Improvement	o
County line	-----	Railroad	+

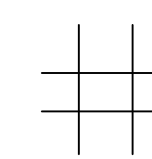
REVISIONS

1	
2	
3	
4	
5	
6	
7	
8	

RESTRICTION

All tax maps created under the provisions of reappraisal legislation are the property of the Assessor of Webster County, West Virginia and the reproduction, copying, modification, distribution or sale of such tax maps or any copies thereof without the written permission of the Webster County Assessor is prohibited by law

KEY MAP



WEBSTER COUNTY

STATE OF WEST VIRGINIA

Office of Assessor

DISTRICT

FORK LICK

SHEET NO: FD-2

Date, Aerial Photography: 4-23-60
Photo No: WE-22-150

Date, Map: 4-8-63
Scale: 1"=100'