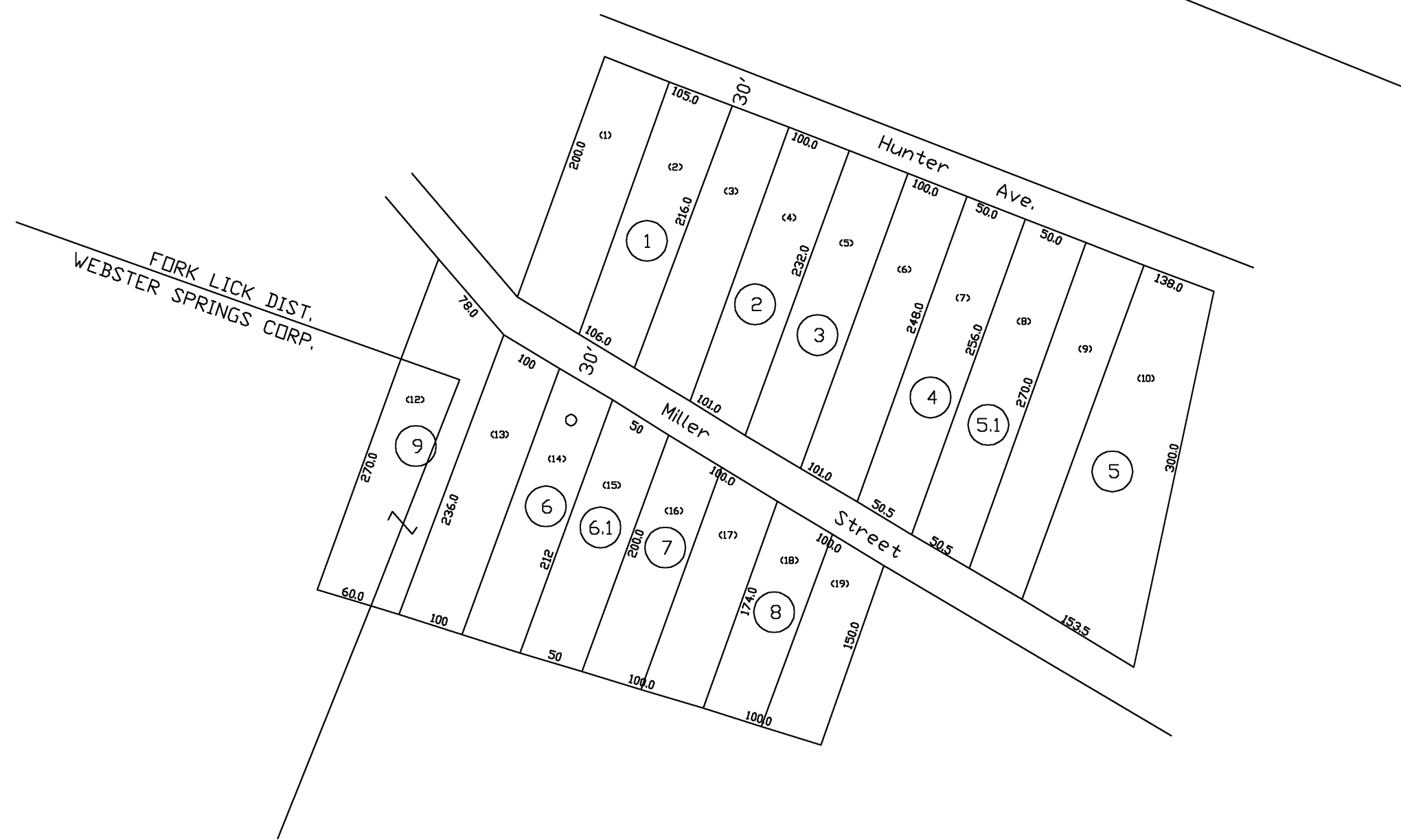


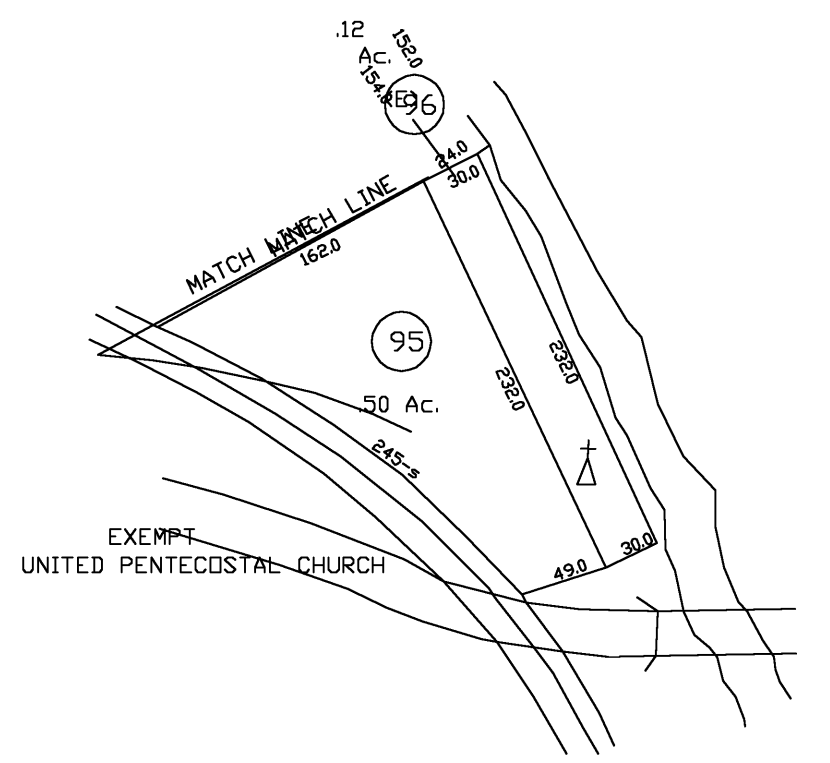


GOLDEN SHORE ADDITION
SCALE 1" = 100'

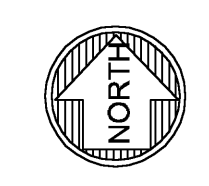
This Area Shown on Map 8-N
Scale 1" = 400'



SCALE 1" = 100'



EXEMPT
UNITED PENTECOSTAL CHURCH



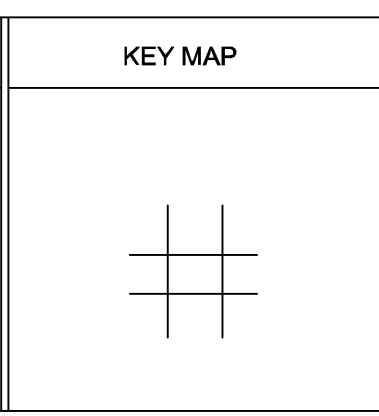
For Tax Purposes Only
Prepared by
Dana Lynch, Assessor
Webster County

LEGEND	
Property line	———
Edge of pavement or roadway	———
Corporation line	———
District line	———
County line	———
Original lot line	----- (15)
Dead lot number	(15)
Parcel or index number	(66)
Improvement	o
Railroad	+

REVISIONS	
1	
2	
3	
4	
5	
6	
7	
8	

RESTRICTION

All tax maps created under the provisions of reappraisal legislation are the property of the Assessor of Webster County, West Virginia and the reproduction, copying, modification, distribution or sale of such tax maps or any copies thereof without the written permission of the Webster County Assessor is prohibited by law



WEBSTER COUNTY
STATE OF WEST VIRGINIA
Office of Assessor

DISTRICT FORK LICK
SHEET NO: FD-6 & 6A
Date, Aerial Photography: 4-23-60
Photo No: we-22-178
Date, Map: 8-3-62
Scale: 1" = 100'