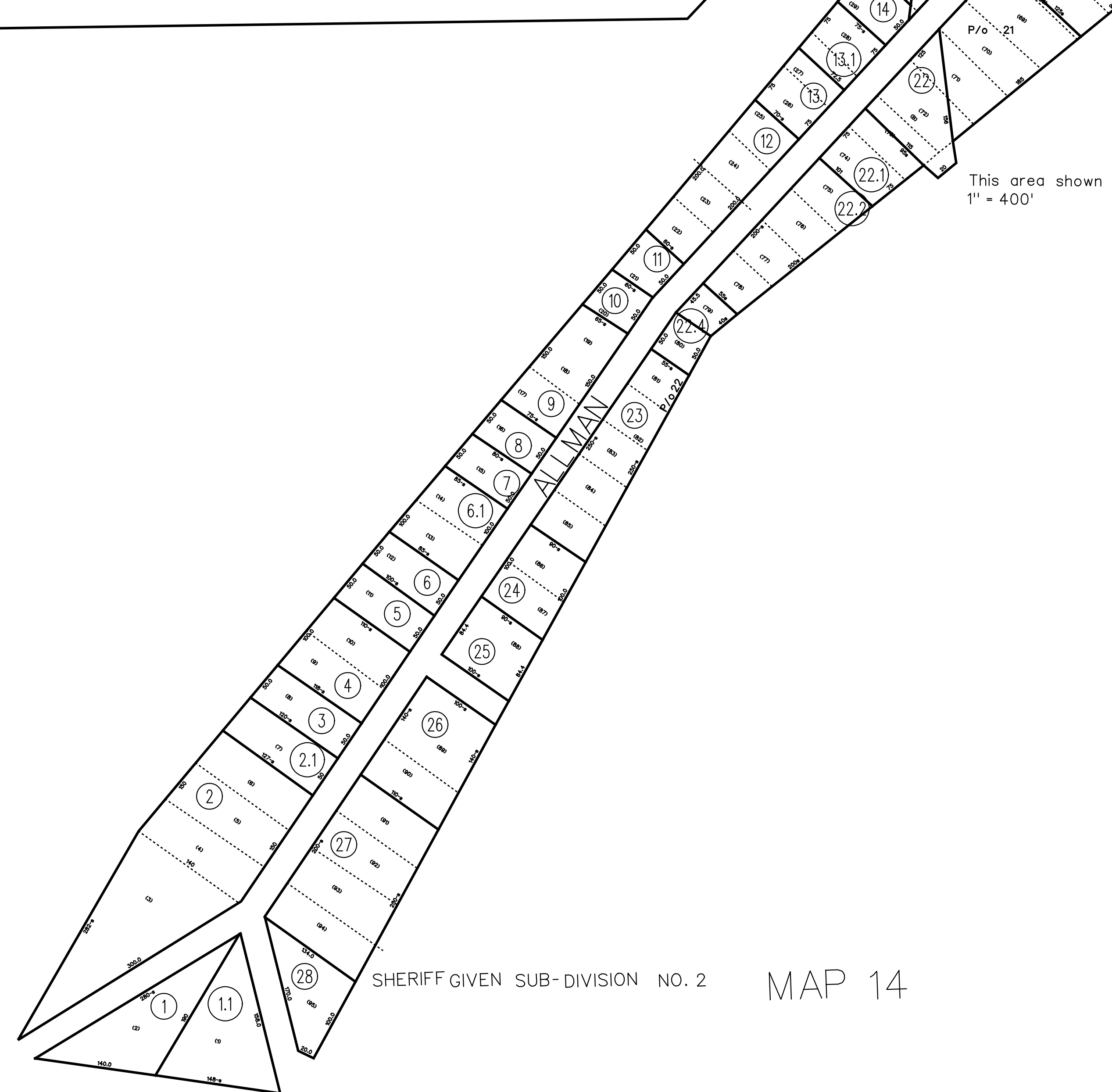


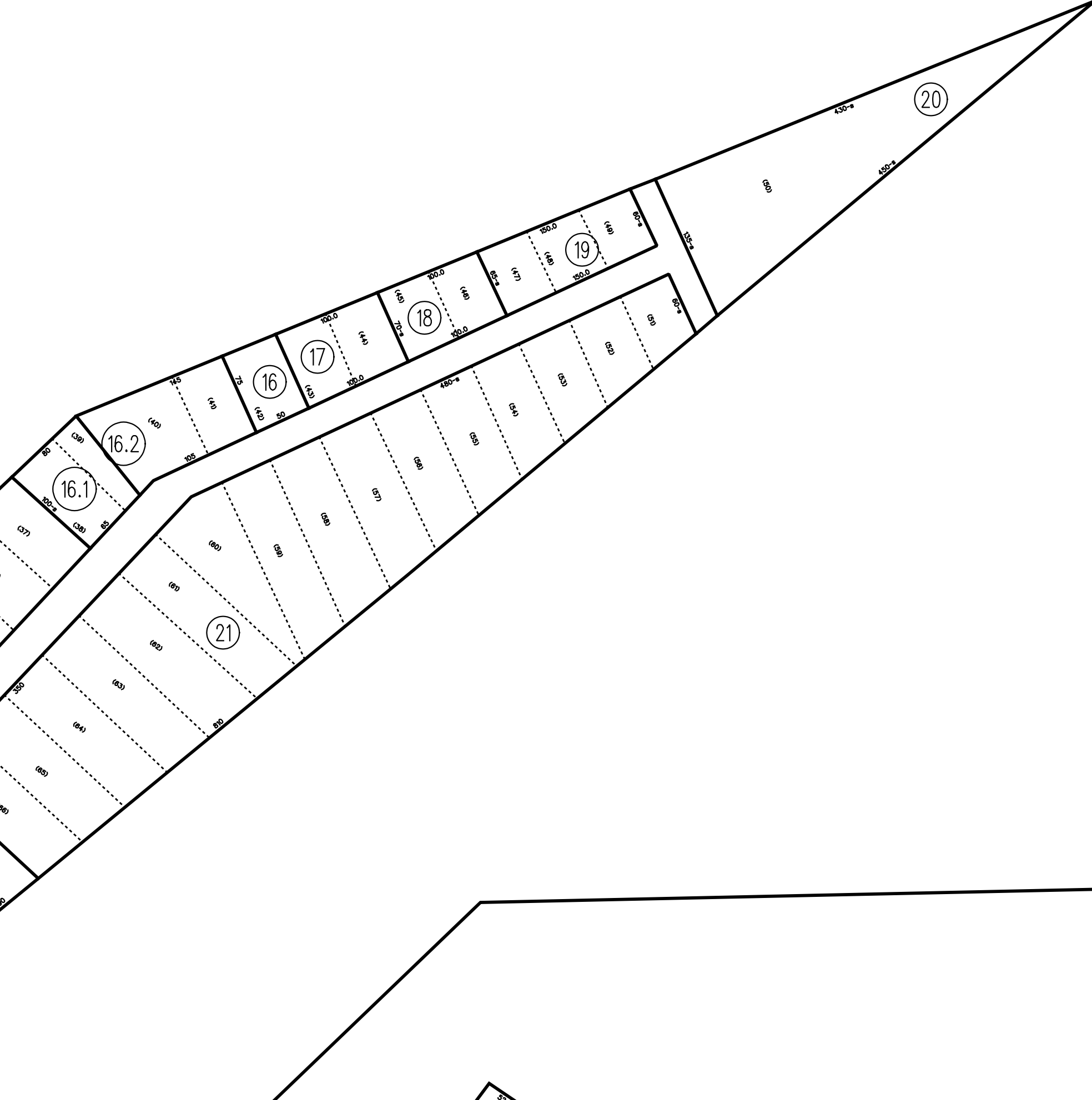
ROLLING ACRES SUB-DIVISION
MAP 14A

This area shown on map 4-Q
1" = 400'



SHERIFF GIVEN SUB-DIVISION NO. 2
MAP 14

This area shown on map 4-R.
1" = 400'



SHERIFF GIVEN ADDITION NO. 1
MAP 14B

This area shown on map 5-R.
1" = 400'



This area shown on map 5-R.
1" = 400'

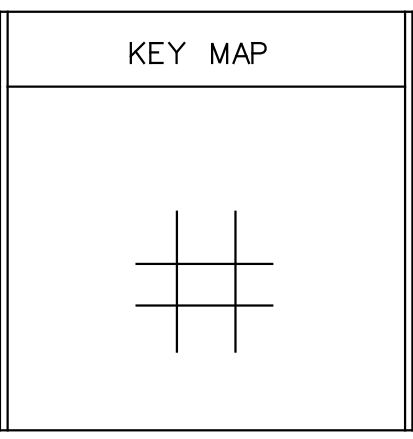
For Tax Purposes Only
Prepared by
Max Cochran - Assessor
2 Court Square
Webster Springs, WV 26288

LEGEND	
Property line	———
Edge of pavement or roadway	———
Corporation line	———
District line	———
County line	———
Original lot line	----- (15)
Deed lot number	(99)
Parcel or index number	○
Improvement	○
Railroad	——+——

REVISIONS	
1	9/13/72 DNP
2	11-26-80 DF
3	7-1-82 DF
4	7-1-87 NCS
5	7-1-89 REB
6	6-1-2013 HDM
7	
8	

RESTRICTION

All tax maps created under the provisions of reappraisal legislation are the property of the Assessor of Webster County, West Virginia and the reproduction, copying, modification, distribution or sale of such tax maps or any copies thereof without the written permission of the Webster County Assessor is prohibited by law



WEBSTER COUNTY
STATE OF WEST VIRGINIA
Office of Assessor

DISTRICT GLADE
SHERIFF GIVEN ADDITION 1 & 2
SHEET NO: GD-14&14A&14B
Date, Aerial Photography: 4-23-60
Photo No: WE-2314
Date, Map: 5-6-64
Scale: 1" = 100'