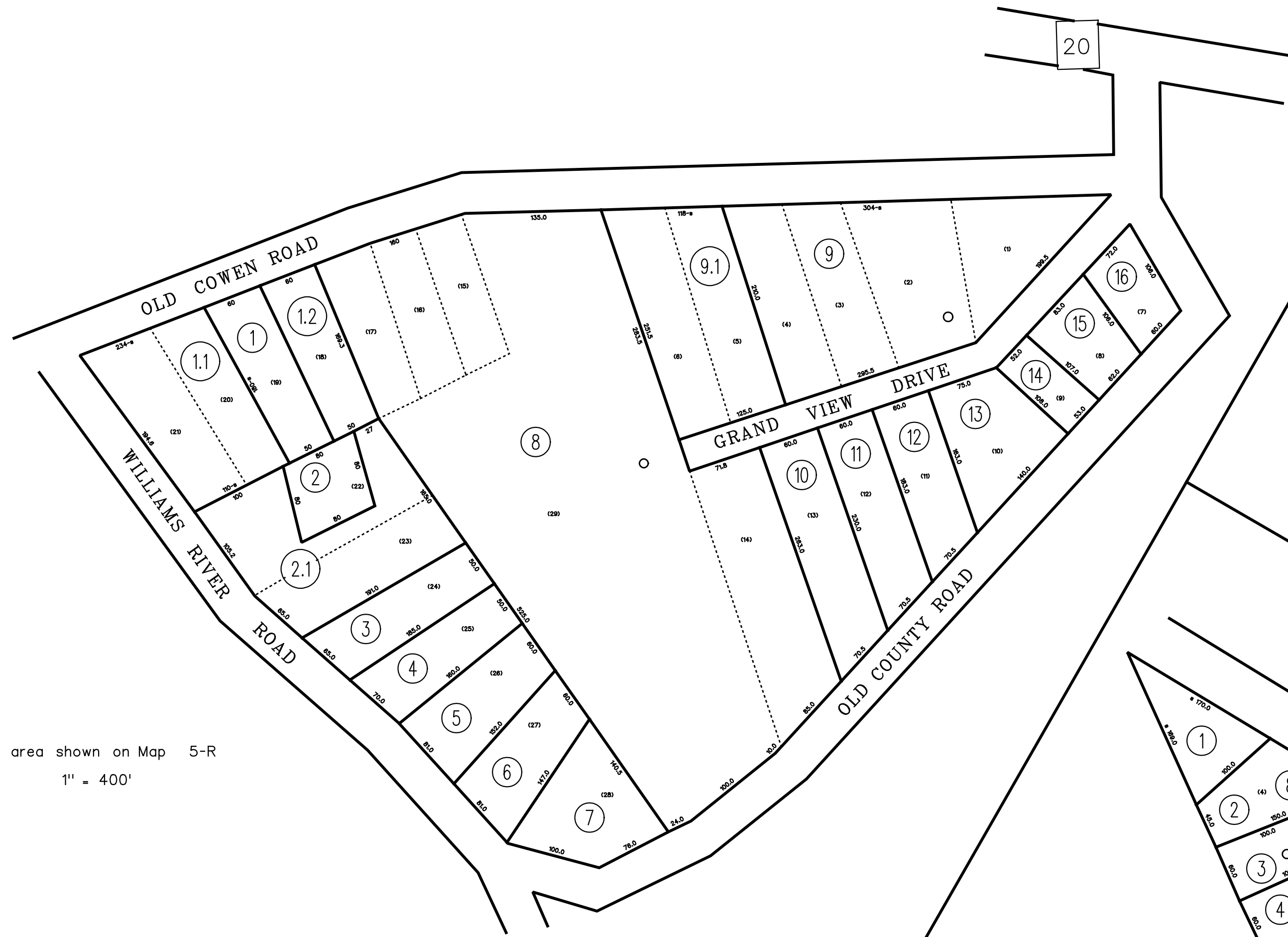
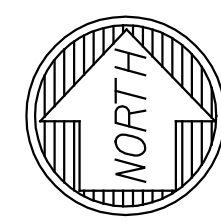


This area shown on Map 5-R
1" = 400'

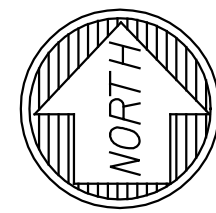
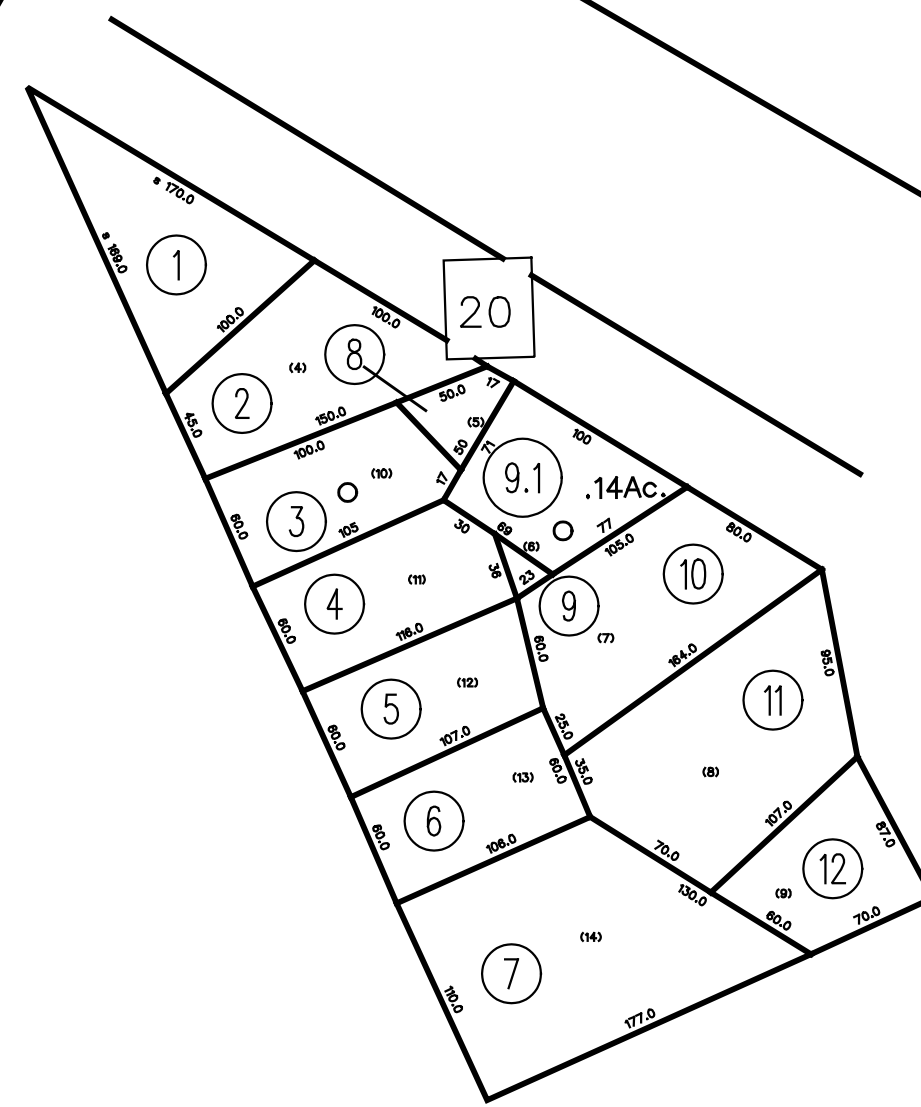


This area shown on Map 5-R
1" = 400'



J.F. SMITH ADDITION NO. 4
SCALE: 1" = 100'

MAP 2A



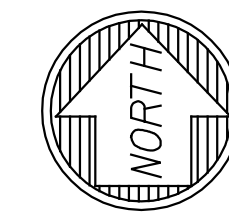
JOHN LESLIE ADDITION
SCALE: 1" = 100'

MAP 2B

This area shown on Map 5-R
1" = 400'



This area shown on Map 5-R
1" = 400'



J.F. SMITH ADDITION NO. 6
SCALE: 1" = 100'

MAP 2

For Tax Purposes Only

Prepared by
Max Cochran - Assessor
2 Court Square
Webster Springs, WV 26288

LEGEND

Property line	— — — — —	Original lot line	- - - - - (15)
Edge of pavement or roadway	— — — — —	Deed lot number	Ⓣ
Corporation line	— — — — —	Parcel or index number	Ⓣ
District line	— — — — —	Improvement	○
County line	— — — — —	Railroad	— + — + —

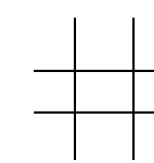
REVISIONS

1	9/13/72	DNP
2	11-26-80	DF
3	7-1-82	DF
4	7-1-87	NCS
5	7-1-89	REB
6	6-1-2013	HDM
7		
8		

RESTRICTION

All tax maps created under the provisions of reappraisal legislation are the property of the Assessor of Webster County, West Virginia and the reproduction, copying, modification, distribution or sale of such tax maps or any copies thereof without the written permission of the Webster County Assessor is prohibited by law

KEY MAP



WEBSTER COUNTY
STATE OF WEST VIRGINIA
Office of Assessor

DISTRICT

GLADE DISTRICT
SHEET NO: GD-2&2A&2B

Date, Aerial Photography: 4-23-60
Photo No: WE-23-14

Date, Map: 3-22-62
Scale: 1"=100'