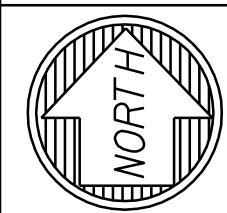
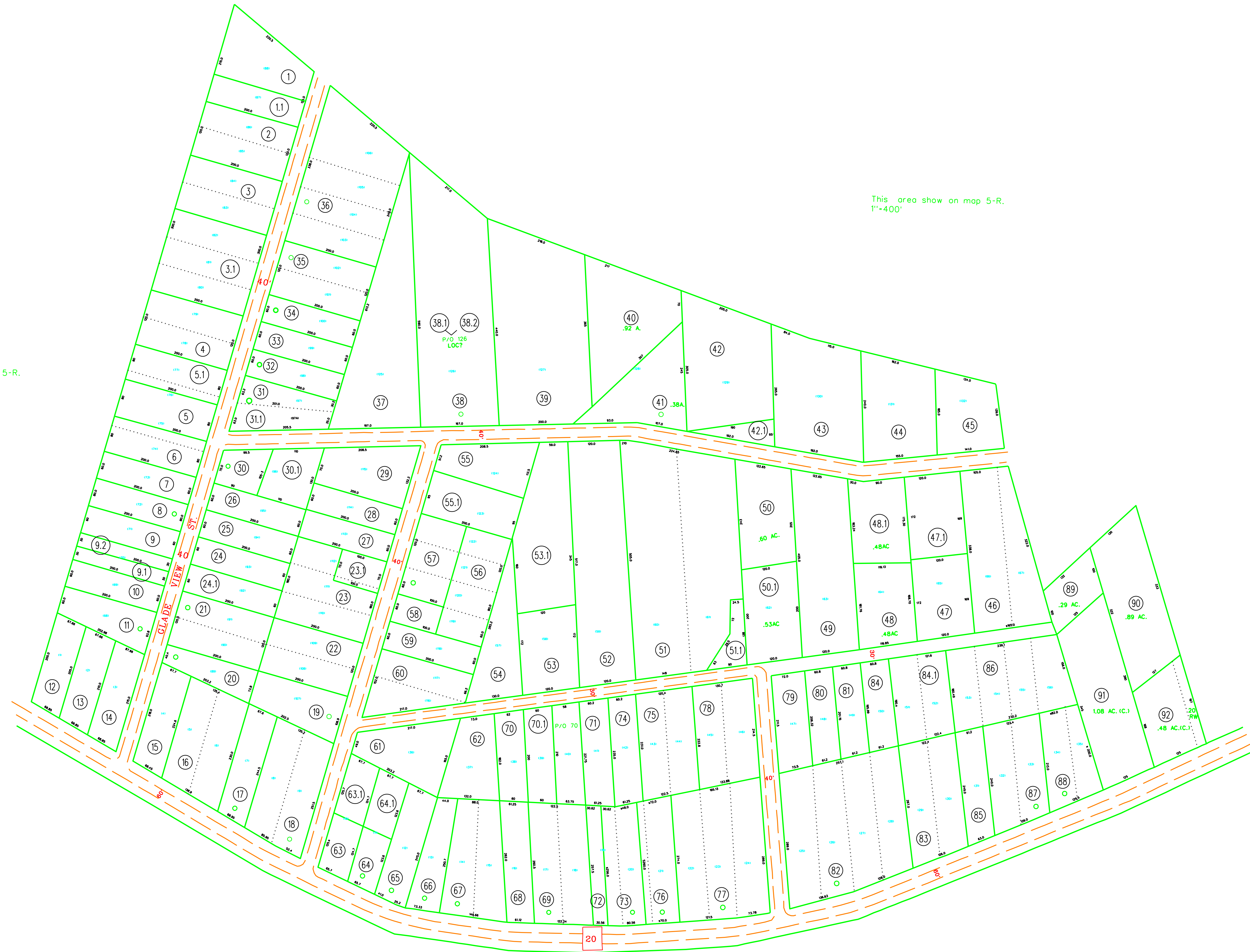


This area shown on map 5-R.  
1"=400'

This area show on map 5-R.  
1"=400'



For Tax Purposes Only  
Prepared by  
Max Cochran - Assessor  
2 Court Square  
Webster Springs, WV 26288

LEGEND	
Property line	Original lot line
Edge of pavement or roadway	Deed lot number (15)
Corporation line	Parcel or index number (99)
District line	Improvement (o)
County line	Railroad

REVISIONS	
1	9/13/72 DNP
2	11-26-80 DF
3	7-1-82 DF
4	7-1-87 NCS
5	7-1-89 REB
6	6-1-2013 HDM
7	12-7-2015 HDM
8	11-9-2016 HDM

RESTRICTION

All tax maps created under the provisions of reappraisal legislation are the property of the Assessor of Webster County, West Virginia and the reproduction, copying, modification, distribution or sale of such tax maps or any copies thereof without the written permission of the Webster County Assessor is prohibited by law

KEY MAP	
5-R-5-R	5-R-5-R
5-R-5-R	5-R-5-R
5-R-5-R	5-R-5-R

WEBSTER COUNTY  
STATE OF WEST VIRGINIA  
Office of Assessor

DISTRICT GLADE DISTRICT  
J.F. SMITH ADDITION NO.3  
SHEET NO: GD-6  
Date, Aerial Photography: 4-23-60  
Photo No: WE-23-14  
Date, Map: 3-22-62  
Scale: 1"=100'