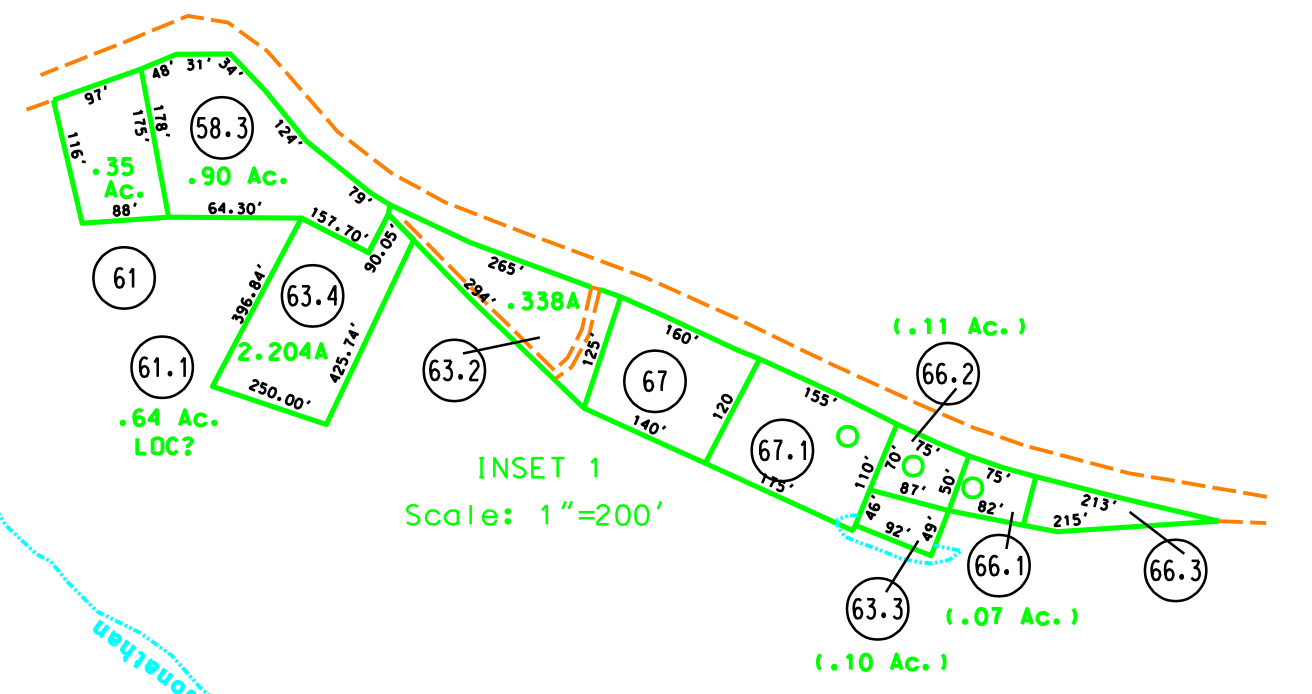
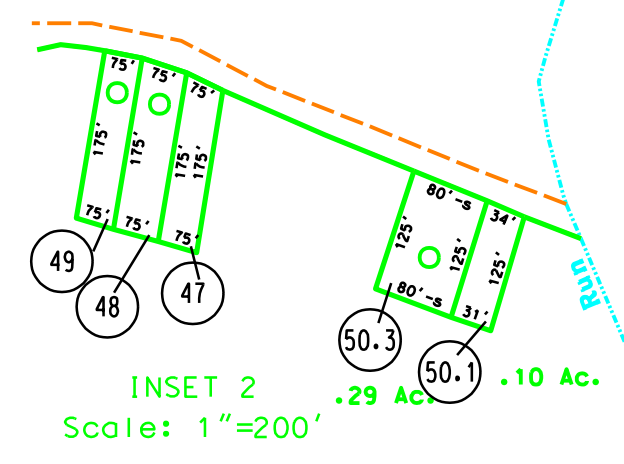


65-1	205.0' x 50.0' x 90.0' x 138.0'
65-2	50'-0" x 150'-0" x 120'-0" x 50'-0" x 120'-0"
65-3	90.0' x 100.0'
65-4	100.0' x 200.0'
65-5	25.0' x 80.0'
65-6	25.0' x 80.0'
65-7	25.0' x 80.0'
65-8	25.0' x 80.0'

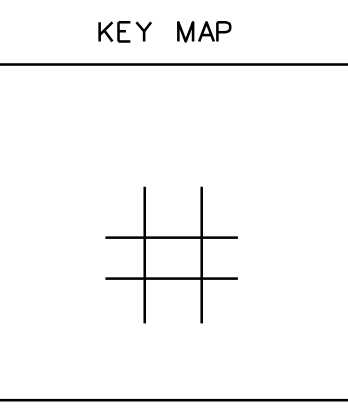


For Tax Purposes Only  
Prepared by  
Max Cochran - Assessor  
2 Court Square  
Webster Springs, WV 26288

LEGEND

Original lot line	---
Deed lot number	(15)
Parcelator index number	⊙
Improvement	o
Railroad	—+—+—+—

REVISIONS	REVISIONS	REVISIONS
1	9	17
2	10	18
3	11	19
4	12	20
5	13	21
6	14	22
7	15	23
8	16	24
9	7-1-82 DF	17 6-1-2013 HDM
10	7-1-83 CP	18 11-9-2016 HDM
11	7-1-83 MEN	19
12	7-1-85 DF	20
13	7-1-87 DF	21
14	7-1-89 DF	22
15	9-94 DH	23
16	2-95 AM	24



WEBSTER COUNTY  
STATE OF WEST VIRGINIA  
Office of Assessor

DISTRICT  
GLADE  
SHEET NO: 6-S  
Date, Aerial Photography: 4-23-60  
Photo No: WE-22-182  
Date, Map: 4-7-64  
Scale: 1" = 400'