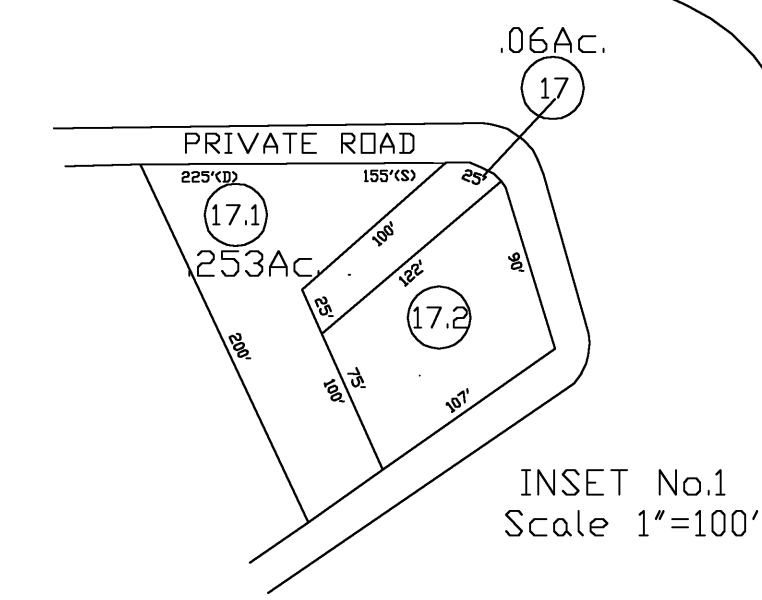



4-T 5-T
4-U 5-U

5-T 6-T
5-U 6-U

4-U 5-U
4-V 5-V

5-U 6-U
5-V 6-V



 **For Tax Purposes Only**
Prepared by
Dana Lynch, Assessor
Webster County

LEGEND	
Property line	Original lot line
Edge of pavement or roadway	Deed lot number
Corporation line	Parcel or index number
District line	Improvement
County line	Railroad

REVISIONS
1
2
3
4
5
6
7
8

RESTRICTION

All tax maps created under the provisions of reappraisal legislation are the property of the Assessor of Webster County, West Virginia and the reproduction, copying, modification, distribution or sale of such tax maps or any copies thereof without the written permission of the Webster County Assessor is prohibited by law

KEY MAP
4-T 5-T 6-T
4-U 5-U 6-U
4-V 5-V 6-V

WEBSTER COUNTY
STATE OF WEST VIRGINIA
Office of Assessor

DISTRICT
GLADE
SHEET NO: 5-U
Date, Aerial Photography: May 1960
Photo No: WE-22-193
Date, Map
Scale: 1"