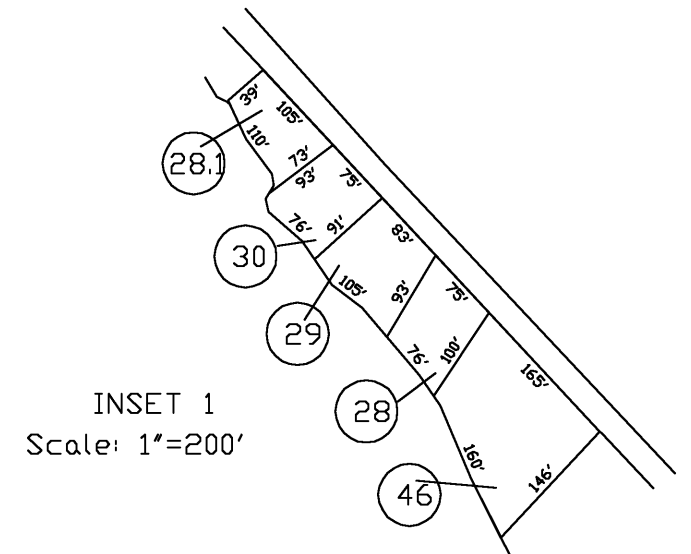
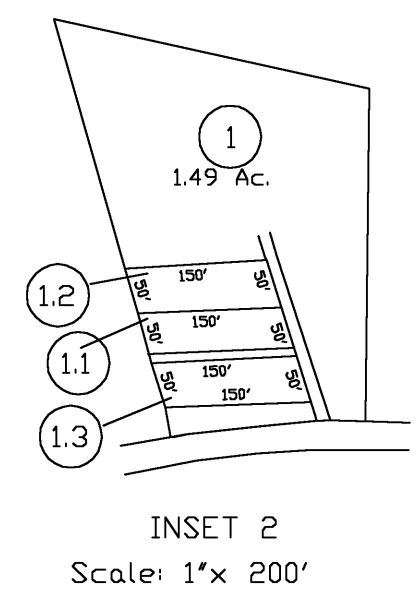


75/24	702.0' x 32.0' x 702.0' x 30.0'
75/25	702.0' x 34.0' x 702.1' x 30.0'
75/26	702.0' x 50.0' x 702.0' x 30.0'
75/27	702.1' x 40.0'
75/28	702.1' x 40.0'
75/29	702.1' x 40.0'
75/30	702.0' x 40.0'
75/31	702.1' x 35.7'
75/32	169.0' x 150.0' x 106.0' x 141.0'
75/33	79.0' x 93.0' x 75.0' x 91.0'
75/34	75.0' x 100.0' x 100.0' x 130.6'
75/35	80.0' x 100.0' x 170.0' x 100.0'
75/36	96.0' x 80.0'
75/37	80.0' x 100.0'
75/38	80.0' x 100.0'
75/39	80.0' x 100.0'
75/40	80.0' x 100.0'
75/41	80.0' x 50.0'
75/42	80.0' x 50.0'
75/43	80.0' x 50.0'
75/44	80.0' x 100.0'



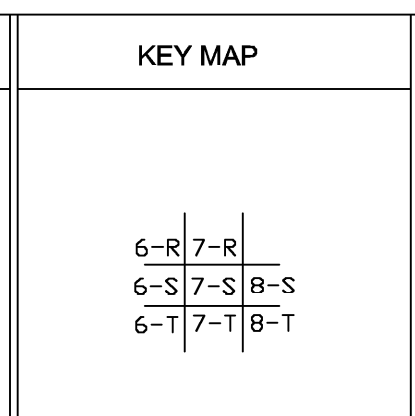
For Tax Purposes Only
Prepared by
Dana Lynch, Assessor
Webster County

LEGEND	
Property line	Original lot line
Edge of pavement or roadway	Deed lot number (15)
Corporation line	Parcel or index number (99)
District line	Improvement (o)
County line	Railroad

REVISIONS
1
2
3
4
5
6
7
8

RESTRICTION

All tax maps created under the provisions of reappraisal legislation are the property of the Assessor of Webster County, West Virginia and the reproduction, copying, modification, distribution or sale of such tax maps or any copies thereof without the written permission of the Webster County Assessor is prohibited by law



WEBSTER COUNTY
STATE OF WEST VIRGINIA
Office of Assessor

DISTRICT
GLADE
SHEET NO: 7-S
Date, Aerial Photography: 4-23-60
Photo No: WE-22-145
Date, Map
Scale: 1"=