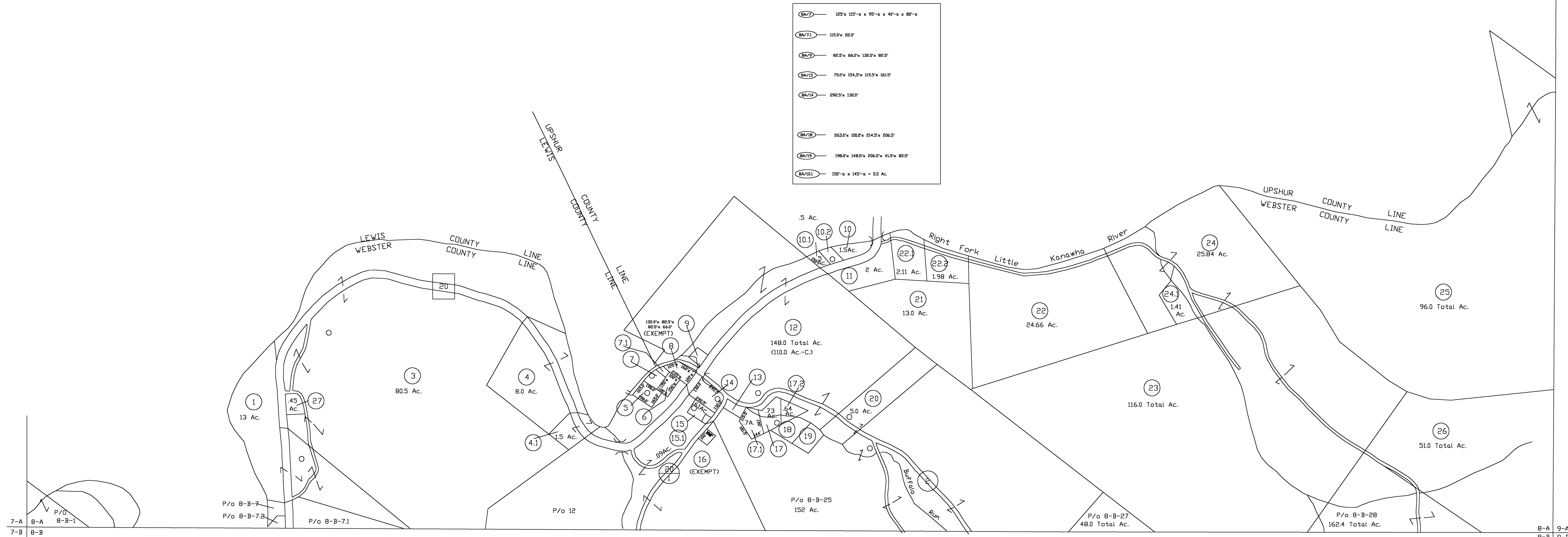


BA/7	125' x 115'-s x 95'-s x 40'-s x 85'-s
BA/71	115.8' x 22.7'
BA/9	82.5' x 66.0' x 132.0' x 82.5'
BA/13	75.0' x 154.5' x 115.5' x 161.5'
BA/14	292.5' x 132.5'
BA/18	263.0' x 100.0' x 214.5' x 206.5'
BA/19	198.0' x 148.5' x 206.5' x 41.5' x 82.5'
BA/101	150'-s x 145'-s = 85 Ac.



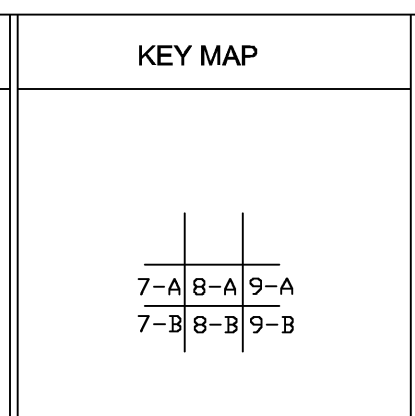
For Tax Purposes Only
 Prepared by
Dana Lynch, Assessor
 Webster County

LEGEND	
Property line	Original lot line
Edge of pavement or roadway	Deed lot number
Corporation line	Parcel or index number
District line	Improvement
County line	Railroad

REVISIONS
1
2
3
4
5
6
7
8

RESTRICTION

All tax maps created under the provisions of reappraisal legislation are the property of the Assessor of Webster County, West Virginia and the reproduction, copying, modification, distribution or sale of such tax maps or any copies thereof without the written permission of the Webster County Assessor is prohibited by law



WEBSTER COUNTY
 STATE OF WEST VIRGINIA
 Office of Assessor

DISTRICT HACKER VALLEY
SHEET NO: 8-A
 Date, Aerial Photography: 4-23-60
 Photo No: WE-22-161
 Date, Map
 Scale: 1"=