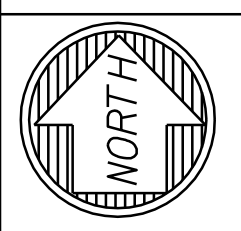
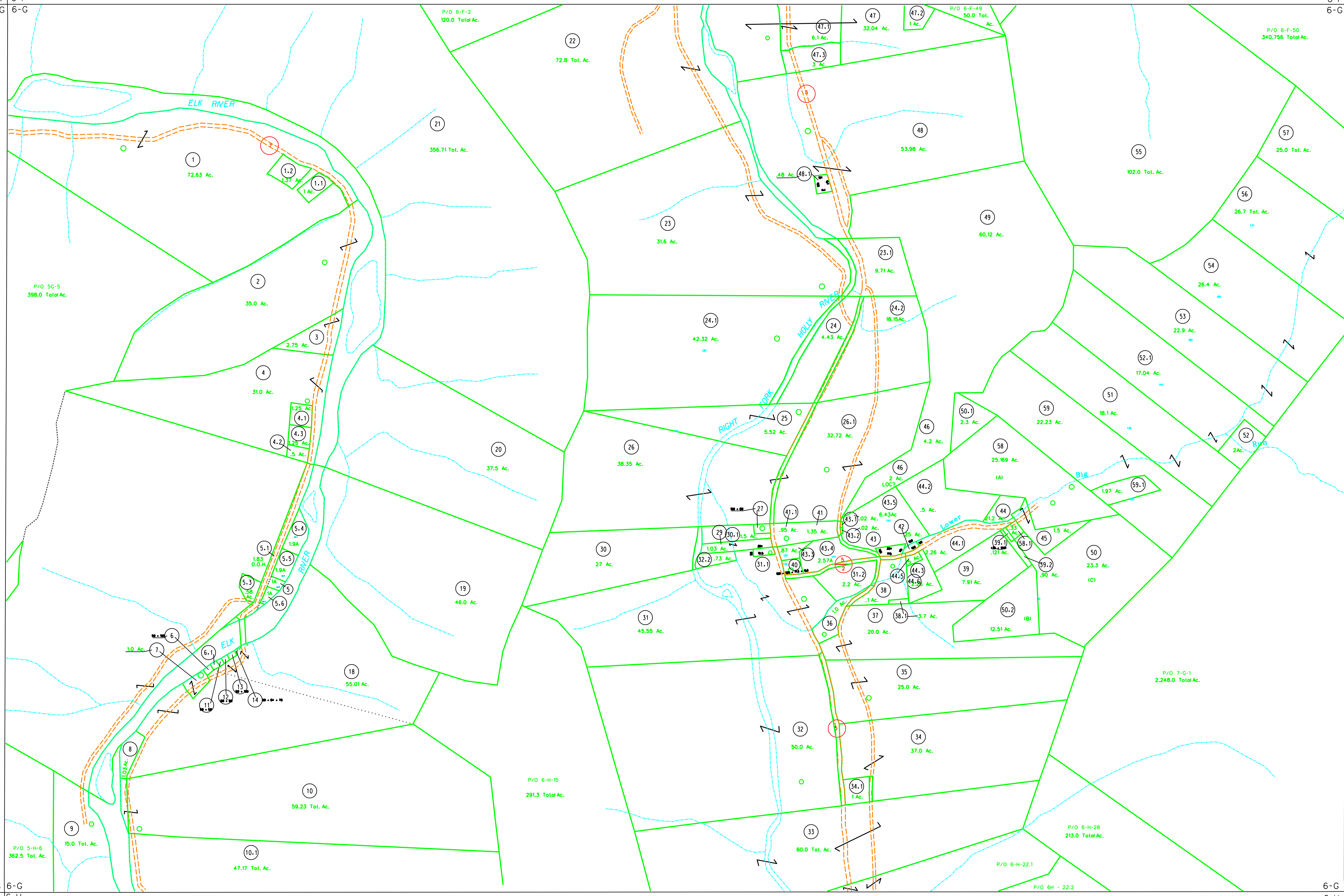


5-F 6-F
5-G 6-G

6-F 7-F
6-G 7-G

5-G 6-G
5-H 6-H

6-G 7-G
6-H 7-H



For Tax Purposes Only
 Prepared by
 Max Cochran - Assessor
 2 Court Square
 Webster Springs, WV 26288

LEGEND	
Property line	—
Edge of pavement or roadway	—
Corporation line	—
District line	—
County line	—
Original lot line	— (15)
Deed lot number	Ⓢ
Parcel or index number	Ⓢ
Improvement	○
Railroad	—

REVISIONS		REVISIONS		REVISIONS	
1	3-25-72 TJM	9	7-1-89 TRL	17	
2	8-78 PW	10	11-94 AM	18	
3	REV 7-80 DR 3-81 NS	11	4-95 AM	19	
4	7-82 CP	12	2011 AC	20	
5	7-1-83 DF	13	11-9-2016 HDM	21	
6	7-1-84 LFS	14		22	
7	7-1-85 CP	15		23	
8	7-1-85 DF	16		24	

KEY MAP			
5F	6F	7F	
5G	6G	7G	
5H	6H	7H	

WEBSTER COUNTY
 STATE OF WEST VIRGINIA
 Office of Assessor

DISTRICT
 HOLLY
 SHEET NO: 6-G
 Date, Aerial Photography: 4-23-60
 Photo No: WE-22-205
 Date, Map: 10-4-62
 Scale: 1"=400'