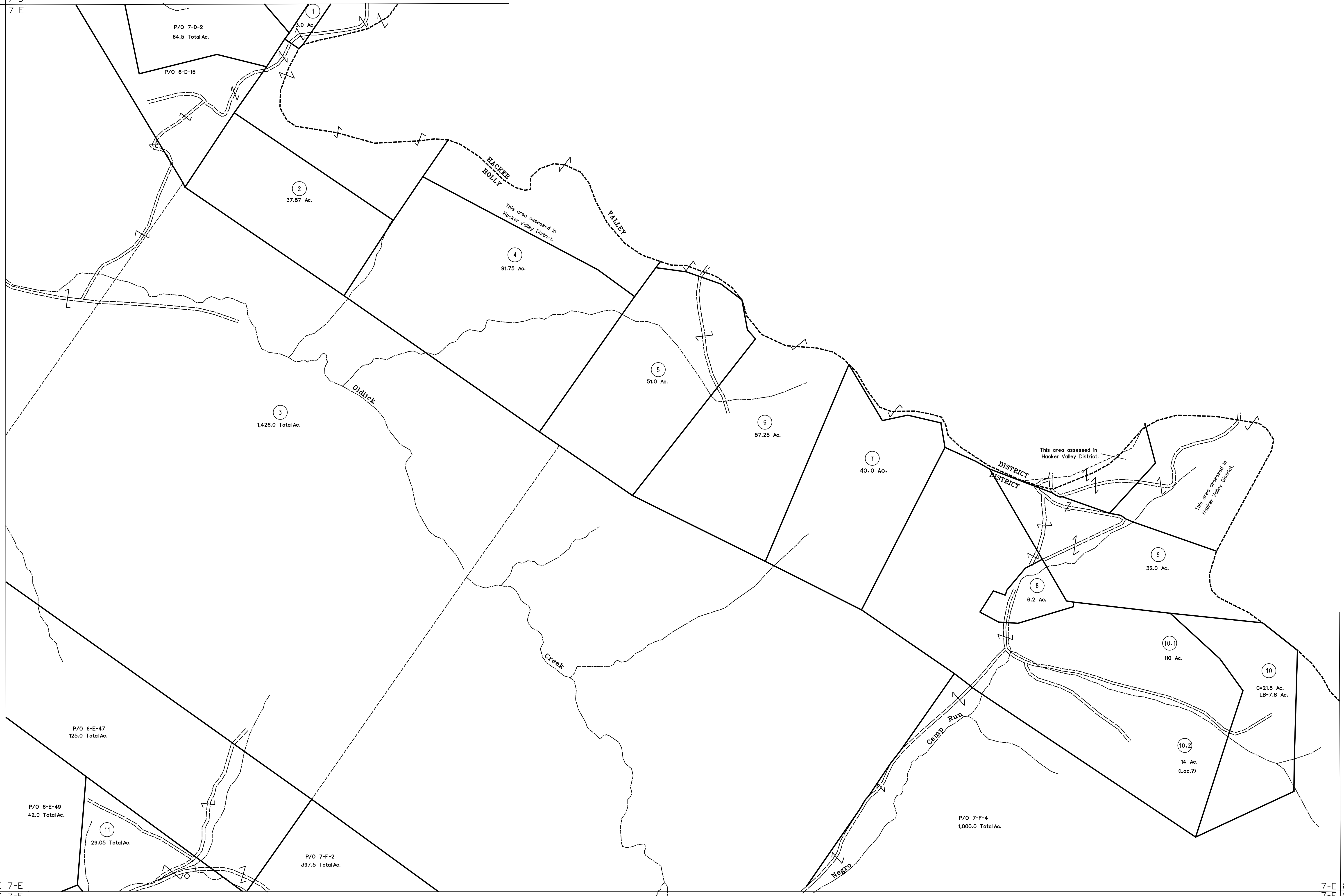


6-D 7-D  
6-E 7-E



6-E 7-E  
6-F 7-F

7-E 8-E  
7-F 8-F

**For Tax Purposes Only**  
Prepared by  
Max Cochran - Assessor  
2 Court Square  
Webster Springs, WV 26288

| LEGEND                      |                |
|-----------------------------|----------------|
| Property line               | —————          |
| Edge of pavement or roadway | - - - - -      |
| Corporation line            | - - - - -      |
| District line               | - - - - -      |
| County line                 | —————          |
| Original lot line           | - - - - - (15) |
| Deed lot number             | Ⓣ              |
| Parcel or index number      | Ⓣ              |
| Improvement                 | ○              |
| Railroad                    | —+—+—+—        |

| REVISIONS |              |
|-----------|--------------|
| 1         | 3-2-72 TJM   |
| 2         | 8-78 PW      |
| 3         | 7-1-87 DF    |
| 4         | 7-1-89 TRL   |
| 5         | 5-28-2013 HM |
| 6         |              |
| 7         |              |
| 8         |              |

**RESTRICTION**

All tax maps created under the provisions of reappraisal legislation are the property of the Assessor of Webster County, West Virginia and the reproduction, copying, modification, distribution or sale of such tax maps or any copies thereof without the written permission of the Webster County Assessor is prohibited by law.

| KEY MAP |    |
|---------|----|
| 6D      | 7D |
| 6E      | 7E |
| 6F      | 7F |

**WEBSTER COUNTY**  
STATE OF WEST VIRGINIA  
Office of Assessor

**DISTRICT HOLLY**  
**SHEET NO: 7-E**  
Date, Aerial Photography: 4-23-60  
Photo No: WE-22-170  
Date, Map: 11-2-62  
Scale: 1" = 400'