

P/O 7-G-1
2,248.0 Total Ac.

P/O 8-G-1
1,510.0 Total Ac.

P/O 5-G-1
1,510.0 Total Ac.

P/O 6-H-28
213.0 Total Ac.

1
421.0 Total Ac.

41
1,576.0 Total Ac.

32
65.0 Ac.

2
25.0 Ac.

30
29.0 Ac.

31
70.41 Ac.

37
35.0 Ac.

33
10.0 Ac.

38
71.0 Ac.

36
50.0 Ac.
40.0 Ac. - (Cal.)

42
14.60 Ac.

46
84.4 Ac.

42.1
14.60 Ac.

44
19.56 Ac.

44.2
1.54 Ac.

43
14 Ac.

42.2
2.10 Ac.

45
6 Ac.

39
3.34 Ac.

P/O 7-J-65
15.66 Tot. Ac.
65.0 Tot. Ac. (Cal.)

P/O 7-J-66-2
50.0 Tot. Ac.

P/O 7-J-86
75.5 Total Ac.

P/O 7-J-64
28.0 Total Ac.

40
6.46 Ac.

P/O 7-J-44
71.5 Total Ac.

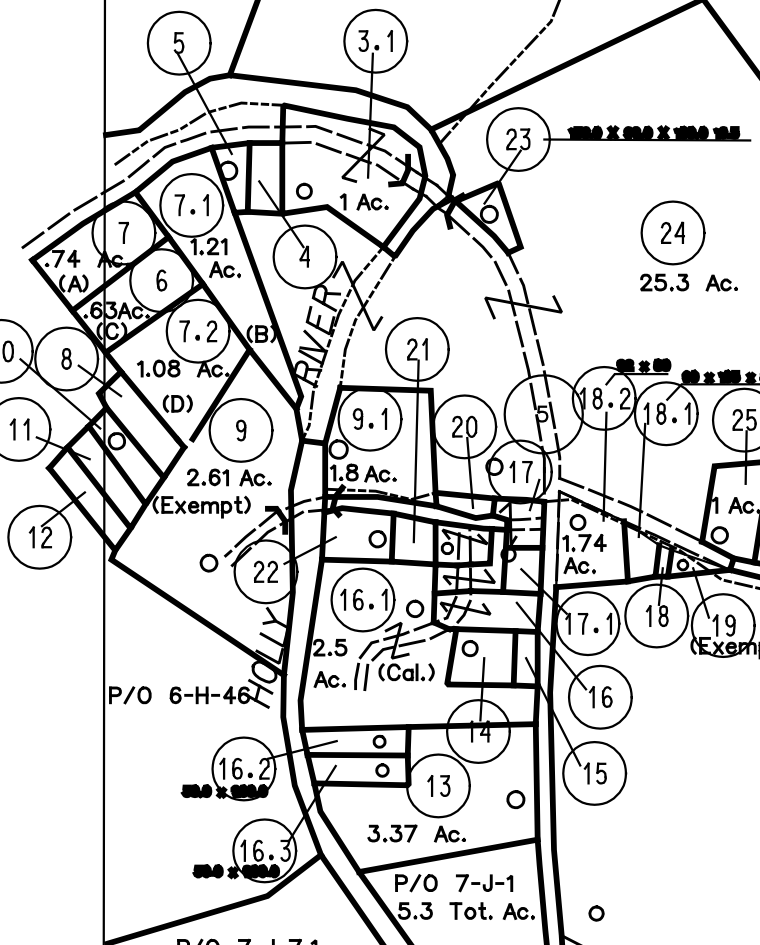
6-H 7-H
6-J 7-J

6-H 8-H
7-J 8-J

P/O 7-J-7.1
5.3 Tot. Ac.

P/O 7-J-2

P/O 6-H-38



For Tax Purposes Only
Prepared by
Max Cochran - Assessor
2 Court Square
Webster Springs, WV 26288

LEGEND	
Property line	———
Edge of pavement or roadway	———
Corporation line	———
District line	———
County line	———
Original lot line	——— (15)
Deed lot number	(15)
Parcel or index number	(99)
Improvement	o
Railroad	—+—+—+—

REVISIONS	
1	5-28-64
2	
3	6-29-64
4	3-25-72 TJM
5	8-78 PW
6	REV 7-80 DR 3-81 NS
7	7-82 CP
8	7-1-85 CP

RESTRICTION
7-1-87 DF
7-8-89 IR
All maps created under the provisions of redemptive legislation are the property of the Assessor of Webster County, West Virginia and the reproduction, distribution, or sale of such tax maps or any copies thereof without the written permission of the Webster County Assessor is prohibited by law

KEY MAP		
6G	7G	8G
6H	7H	8H
6J	7J	8J

WEBSTER COUNTY
STATE OF WEST VIRGINIA
Office of Assessor

DISTRICT HOLLY
SHEET NO: 7-H
Date, Aerial Photography: 4-23-60
Photo No: WE-22-173
Date, Map: 10-4-62
Scale: 1"= 400'