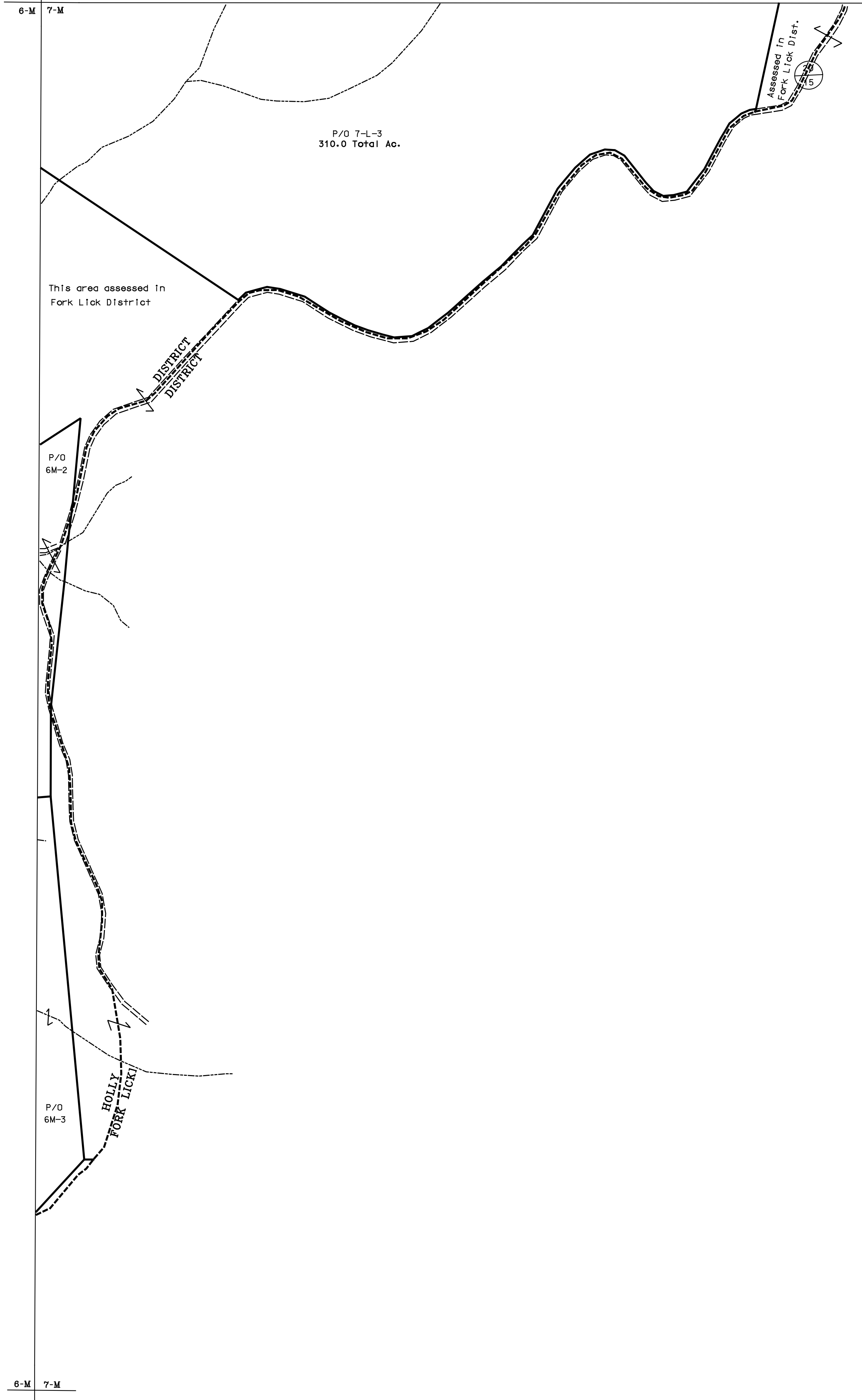
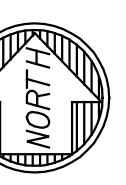


6-L 7-L  
6-M 7-M

6-L 7-L  
6-M 7-M

6-M 7-M



 For Tax Purposes Only

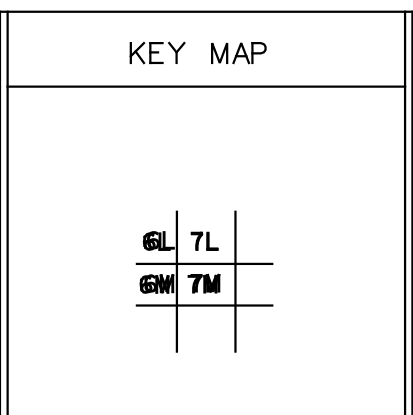
Prepared by  
Max Cochran - Assessor  
2 Court Square  
Webster Springs, WV 26288

LEGEND	
Property line	—————
Edge of pavement or roadway	- - - - -
Corporation line	-----
District line	-----
County line	-----
Original lot line	- - - - -
Deed lot number	(15)
Parcel or index number	Ⓣ
Improvement	o
Railroad	—+—+—+—

REVISIONS	
1	7-1-87 DF
2	7-1-89 TRL
3	5-28-2013 HM
4	
5	
6	
7	
8	

RESTRICTION

All tax maps created under the provisions of reappraisal legislation are the property of the Assessor of Webster County, West Virginia and the reproduction, copying, modification, distribution or sale of such tax maps or any copies thereof without the written permission of the Webster County Assessor is prohibited by law



WEBSTER COUNTY  
STATE OF WEST VIRGINIA  
Office of Assessor

DISTRICT HOLLY

SHEET NO: 7-M

Date, Aerial Photography: 4-23-60  
Photo No: WE-22-177

Date, Map: 10-12-62  
Scale: 1" = 400'