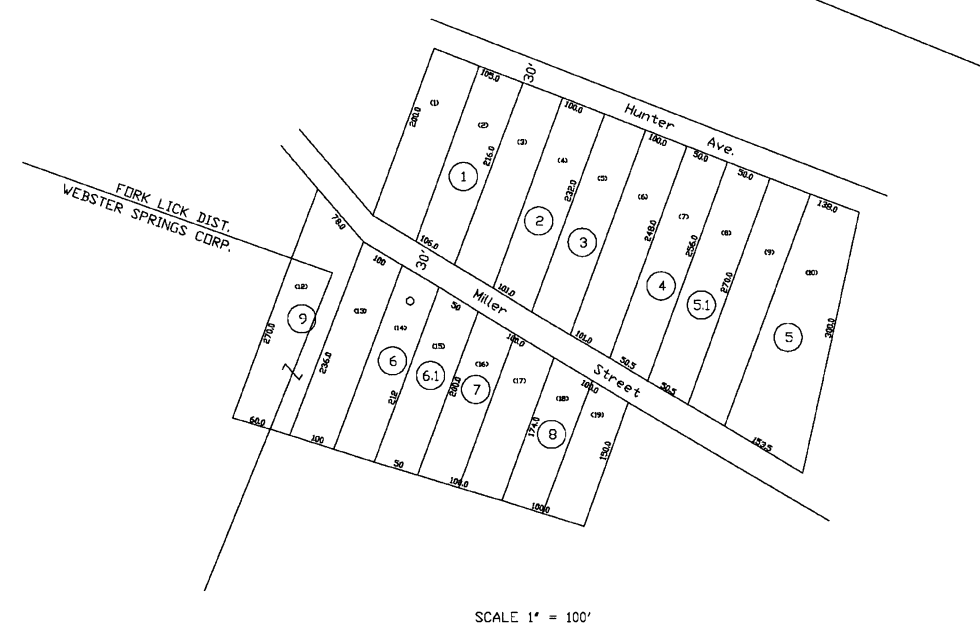


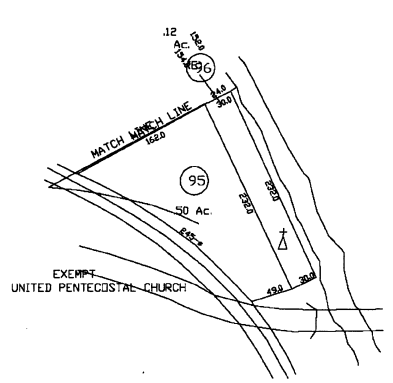


This Area Shown on Map B-N  
Scale 1" = 400'



SCALE 1" = 100'

GOLDEN SHORE ADDITION  
SCALE 1" = 100'

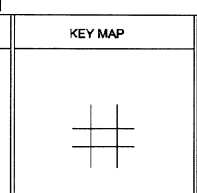


**For Tax Purposes Only**  
Prepared by  
**Dana Lynch, Assessor**  
Webster County

LEGEND	
Property line	Original lot line
Edge of pavement or roadway	Deed lot number (15)
Corporation line	Parcel or index number (96)
District line	Improvement
County line	Halfacre

REVISIONS
1
2
3
4
5
6
7
8

**RESTRICTION**  
All tax maps created under the provisions of reappraisal legislation are the property of the Assessor of Webster County, West Virginia and the reproduction, copying, modification, distribution or sale of such tax maps or any copies thereof without the written permission of the Webster County Assessor is prohibited by law.



**WEBSTER COUNTY**  
STATE OF WEST VIRGINIA  
Office of Assessor

**DISTRICT FORK LICK**  
**SHEET NO: FD-6 & 6A**  
Date, Aerial Photography: 4-23-80  
Photo No: we-22-178  
Date, Map: 8-3-82  
Scale: 1" = 100'