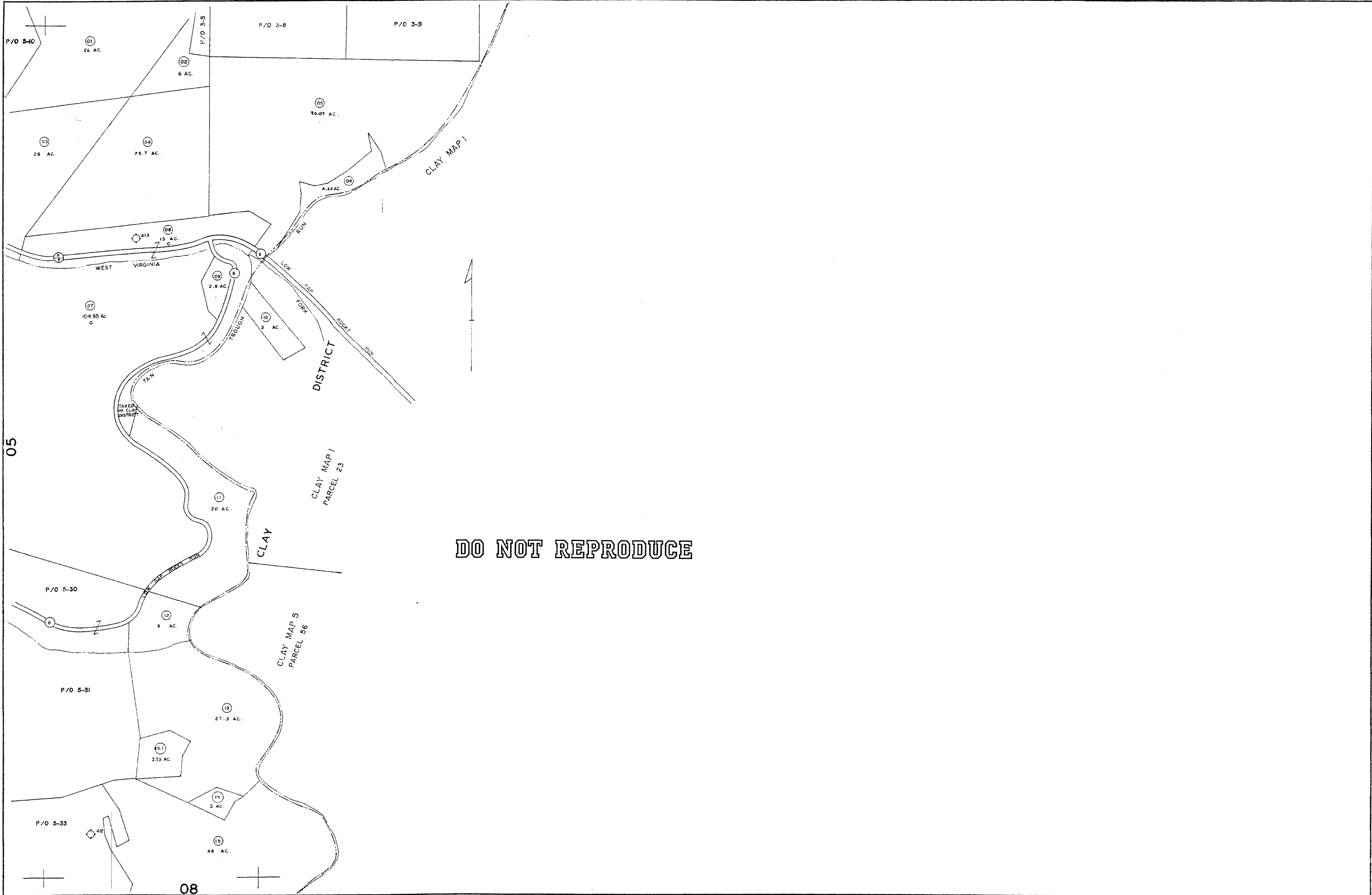


03



DO NOT REPRODUCE

For Tax Purposes Only

Prepared by
L. ROBERT KIMBALL
 Consulting Engineer
 Ebensburg, Pennsylvania

Legend	
Property line	Original lot line
Edge of pavement or roadway	Dead lot number in parenthesis
Corporation line	Parcel or index number in circle
District line	Improvement
County line	Railroad

Revisions			
1	REVISED TO JULY 1965 jgg	5	7-15-09 JEB
2	2-15-93	SLR	17
3	Revised to 7-1-B		18
4	REV. TO 7-1-B4	NCS	19
5	Revised to 7-1-B		20
6	EXCALIBUR GRAPHICS 7/91		21
7	3-1-2004 JEB		22
8	10-1-06 J.E.H.		23

STATE OF WEST VIRGINIA
 COUNTY OF WETZEL
 Office of Assessor

CENTER DISTRICT
 SHEET 06

Date, Aerial Photography: OCTOBER 1958 Date, Map: 4-3-59
 Photo No: 412,413 Scale: 1" = 400'