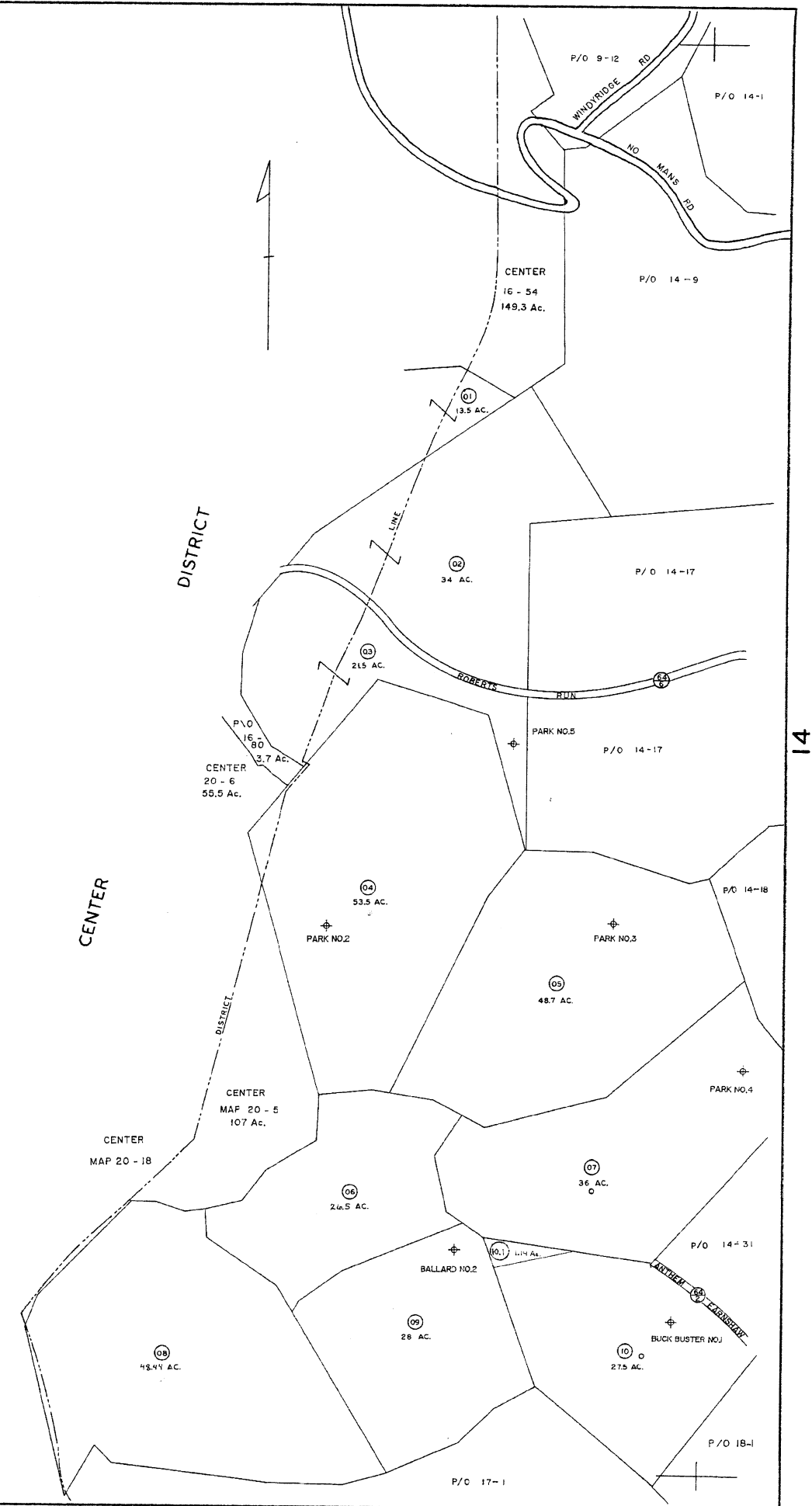


DO NOT REPRODUCE



17

For Tax Purposes Only

Prepared by
L. ROBERT KIMBALL
 Consulting Engineer
 Ebensburg, Pennsylvania

Legend

Property line	-----	Original lot line
Edge of pavement or roadway	-----	Dead lot number in square	151
Corporation line	-----	Parcel or index number in view	17
District line	-----	Improvement	0
County line	-----	Railroad	0

Revisions

No.	Description	Date	By
1	12/20/71	SLR	7-15-09 JEB
2	Revised to 7-1-81		
3	Revised to 7-1-81		
4	Revised to 7-1-81		
5	EXCALIBUR GRAPHICS 7/91		
6	7-1-2001 J.E.R		
7	6-1-2003 JEB		
8	6-1-05 JEB		

STATE OF WEST VIRGINIA
 COUNTY OF WETZEL
 Office of Assessor

CHURCH DISTRICT
 SHEET 13

Date, Aerial Photography: OCTOBER, 1958 Date, Map: 3-26-59
 Photo No: 291,292- Scale: 1" = 400'