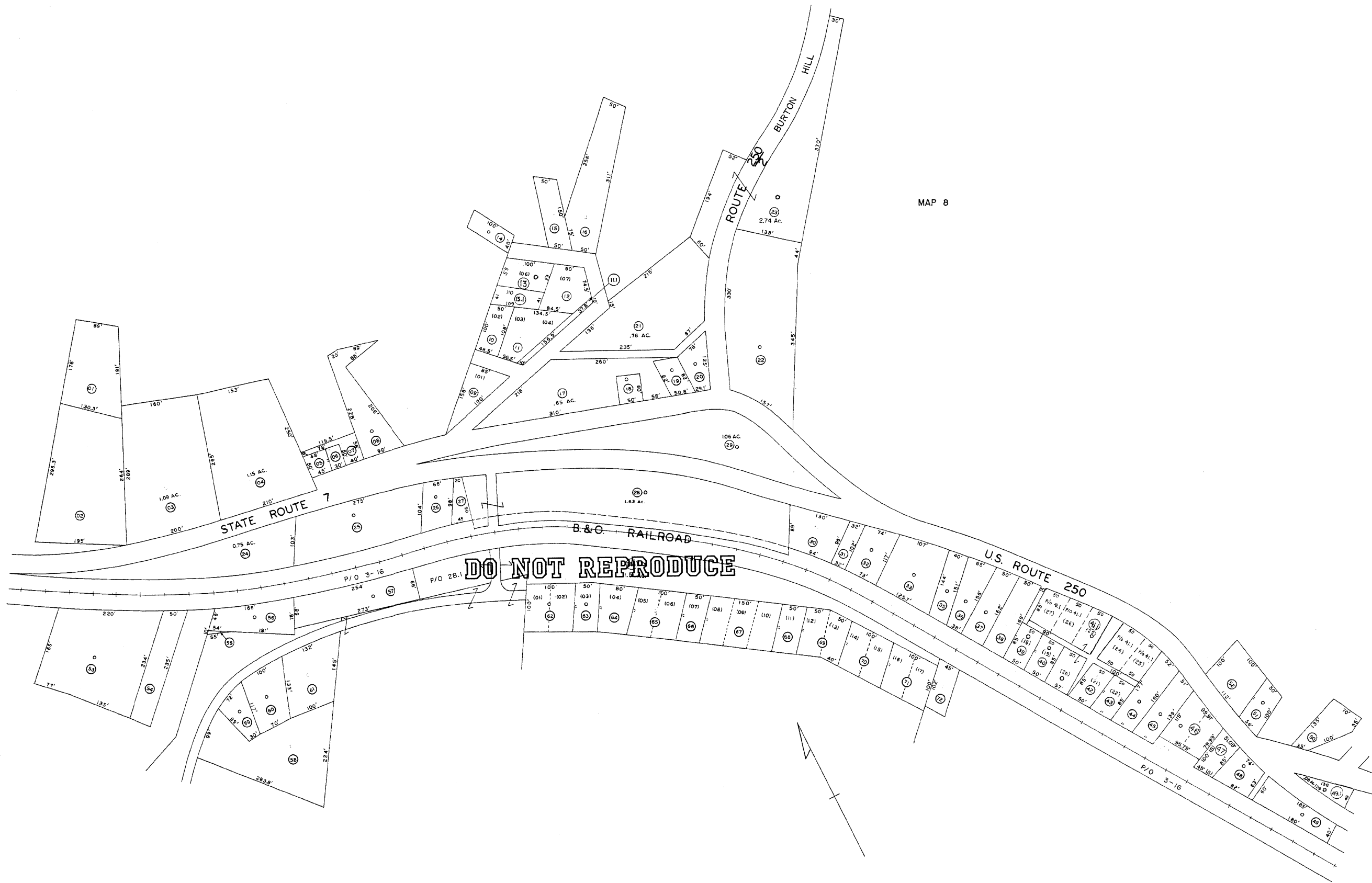


MAP 8



For Tax Purposes Only

Prepared by
L. ROBERT KIMBALL
 Consulting Engineer
 Ebensburg, Pennsylvania

Legend

Property line	Original lot line	(5)
Edge of pavement or roadway	Deed lot number in parenthesis	(99)
Corporation line	Parcel or index number in set	
District line	Improvement	
County line	Railroad	

Revisions

No.	Description	Date	By
1	REVISED TO JULY 1965 jag	?	
2	1/26/76 YEM	10-3-06	JEB
3	12/21/78 SLR	10-1-07	JEB
4	Revised to 7-1-80	7-15-09	JEB
5	Revised to 5-1-86		
6	Revised to 7-1-87		
7	Revised to 12-1-88		
8	EXCALIBUR GRAPHICS 7/90		

STATE OF WEST VIRGINIA
 COUNTY OF WETZEL
 Office of Assessor

CHURCH DISTRICT
 SHEET 20
 BURTON

Date, Aerial Photography: APRIL, 1958 Date, Map: 3-21-59
 Photo No: 641, 642 Scale: 1" = 100'