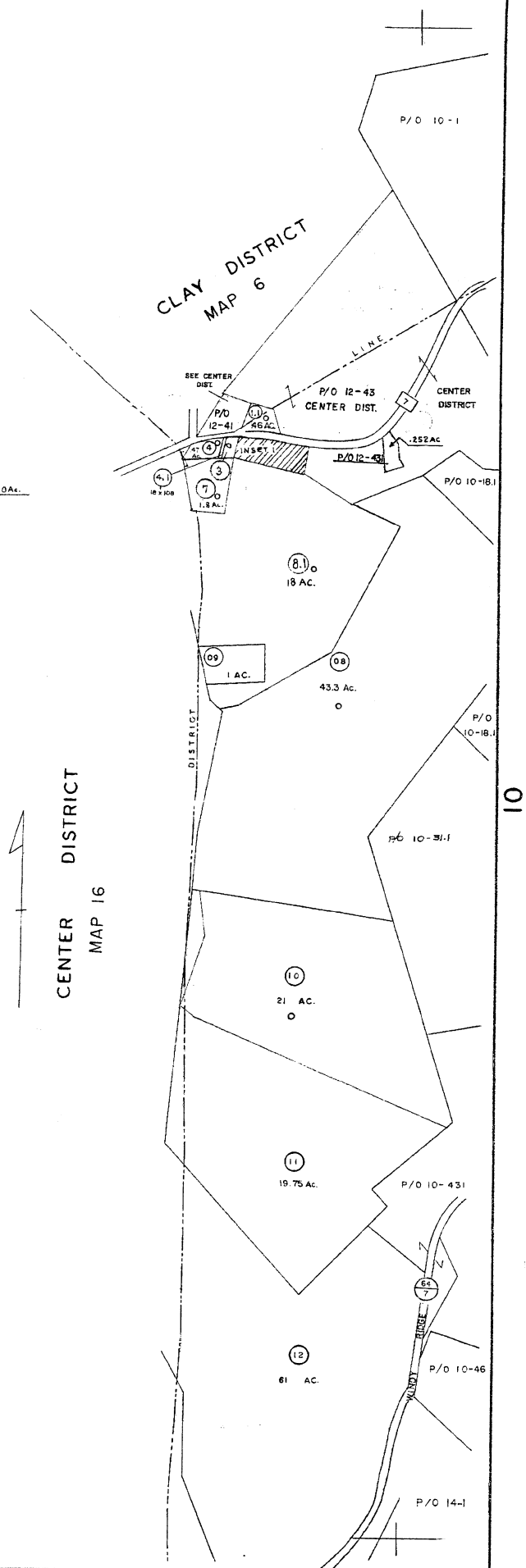


INSET 1 1" = 100'

50x128x409.155 .20Ac.

DO NOT REPRODUCE



For Tax Purposes Only  
 Prepared by  
**L. ROBERT KIMBALL**  
*Consulting Engineer*  
 Ebensburg, Pennsylvania

Legend	
Property line	Original lot line
Edge of pavement or roadway	Dead lot number in parenthesis
Corporation line	Parcel or index number in circle
District line	Improvement
County line	Railroad

Revisions				
1	REVISED TO JULY 1965 JGG	9	EXCALIBUR GRAPHICS 7/91	17
2	1/23/76 VEM	10	7-1-92	18
3	11/30/78 SLR	11	EXCALIBUR GRAPHICS 7/93	19
4	Revised to 7-1-81	12	OGIS 12-96	20
5	Revised to 7-1-87	13	4-15-98 JEB	21
6	Revised to 7-1-87	14	8-1-2003 JEB	22
7	Revised to 12-1-88	15	7-15-09 JEB	23
8	EXCALIBUR GRAPHICS 7/90	16		24

STATE OF WEST VIRGINIA  
 COUNTY OF WETZEL  
 Office of Assessor

CHURCH DISTRICT  
 SHEET 09

Date, Aerial Photography: OCTOBER, 1958 Date, Map: 3-23-59  
 Photo No. 266 Scale: 1" = 400'