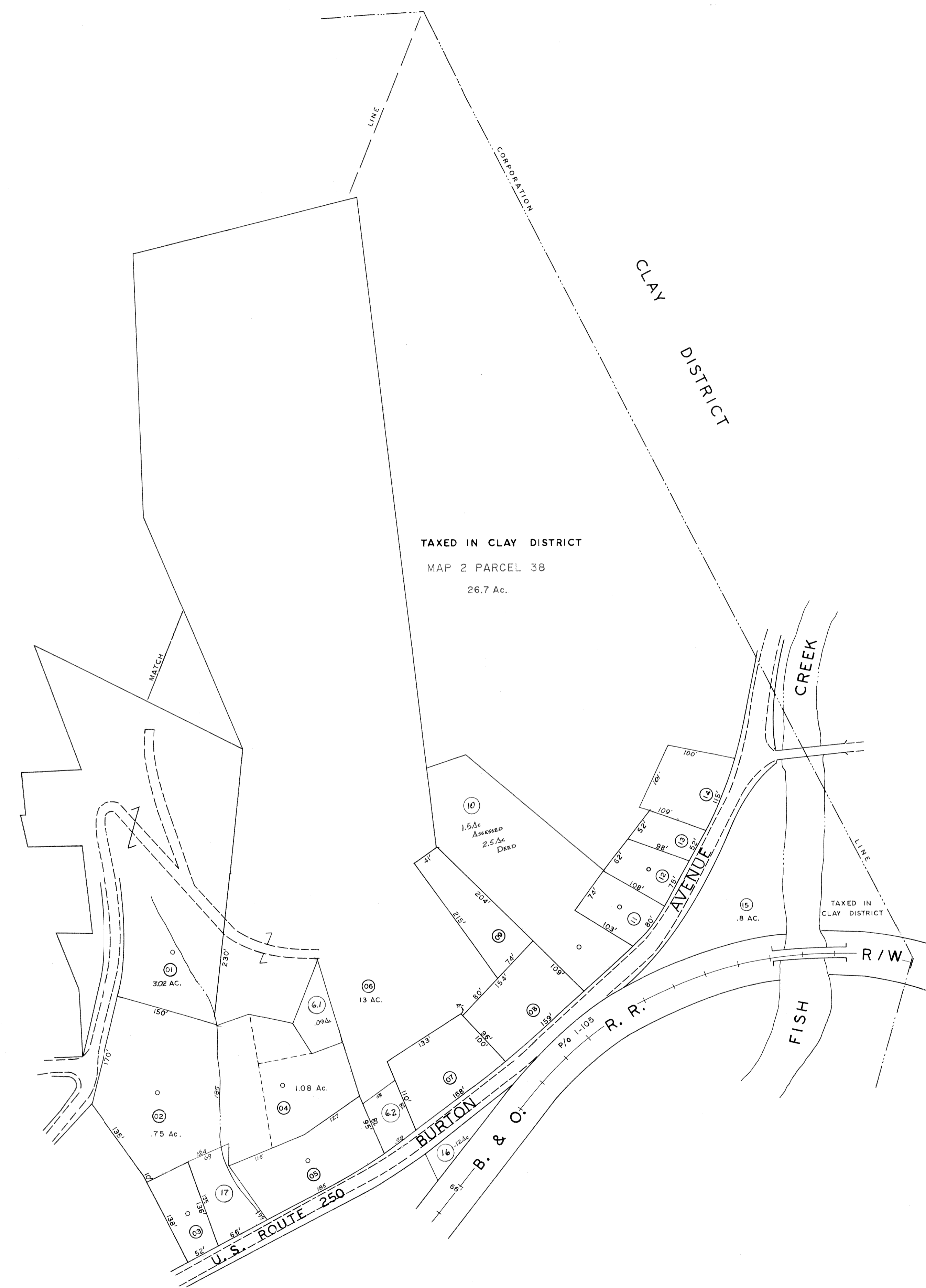


10



02

For Tax Purposes Only

Prepared by
L. ROBERT KIMBALL
 Consulting Engineer
 Ebensburg, Pennsylvania

Legend	
Property line	—
Edge of pavement or roadway	- - - - -
Corporation line	- · - · -
District line	- - - - -
County line	- · - · -
Original lot line	⋯⋯⋯
Deed lot number in parenthesis	(15)
Parcel or index number in circle	Ⓣ
Improvement	○
Railroad	—+—+—+—+—

Revisions	
1	12-1-78 D.G.
2	JULY, 1988 T.H.L.
3	Revised to 7-1-84 E.P.
4	REV. TO 7-1-87 N.C.S.
5	3-1-06 J.E.B.
6	
7	
8	

STATE OF WEST VIRGINIA
 COUNTY OF WETZEL
 Office of Assessor

LITTLETON
 SHEET 03

Date, Aerial Photography: APRIL 1958 Date, Map: 3-18-59
 Photo No: 520,521 Scale: 1" = 100'