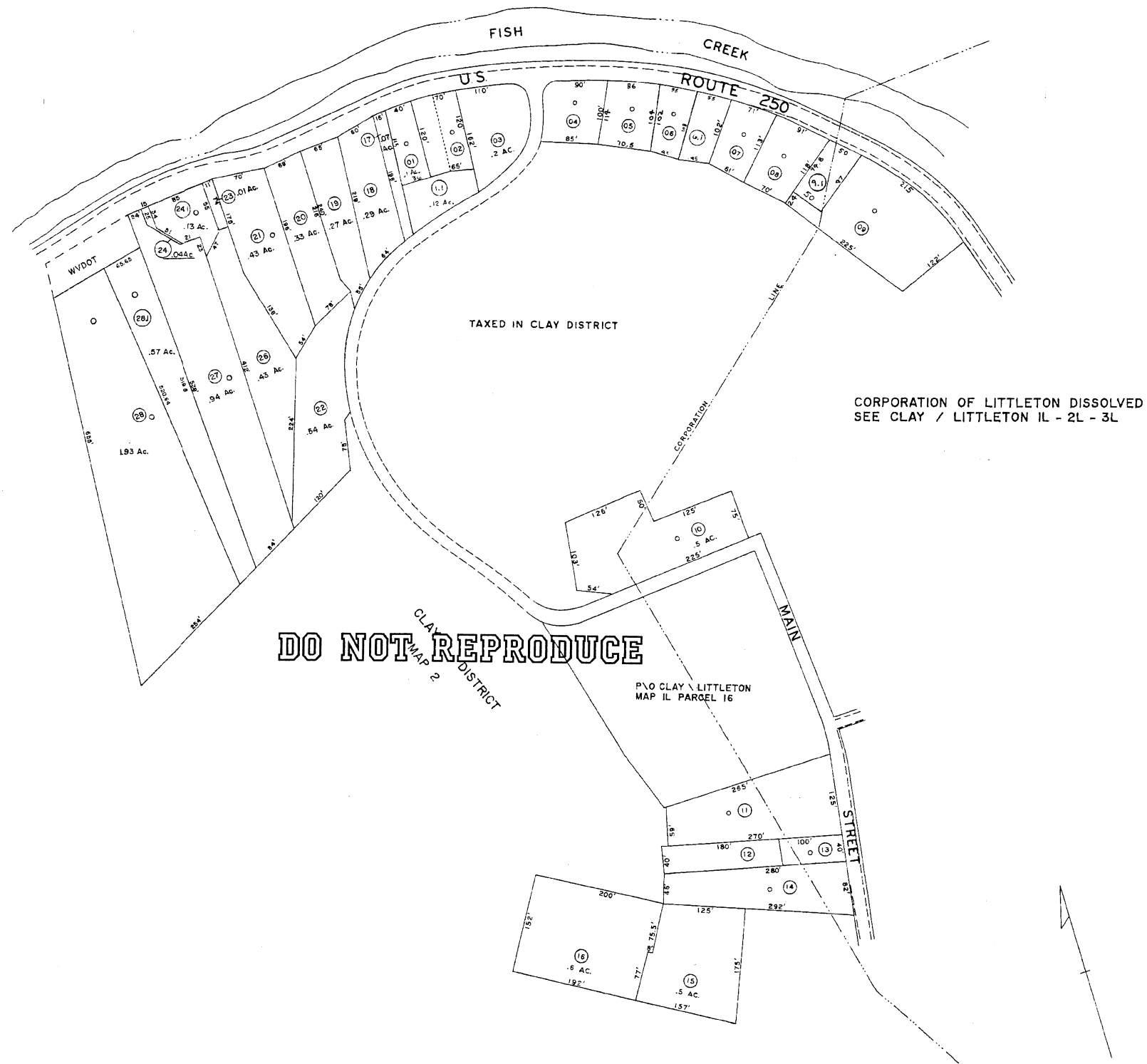


CLAY 2



For Tax Purposes Only

Prepared by  
L. ROBERT KIMBALL  
Consulting Engineer  
Ebensburg, Pennsylvania

Legend

Property line	Original lot line	(15)
Edge of pavement or roadway	Deed lot number	(16)
Corporation line	Parcel or index number	(17)
District line	Improvement	(18)
County line	Railroad	(19)

Revisions

No.	Date	Description	By	Check
1	1-21-76	77.0	J.E.B.	
2	9-7-76	32	J.E.B.	
3	7-1-81	1	J.E.B.	
4	REV. TO 7-1-84	NCS		
5	REV. TO 7-1-85	NCS		
6	REV. TO 7-1-87	H		
7	REV. TO 12-1-88	H		
8	3-1-06	J.E.B.		
9	10-1-06	J.E.B.		
10	7-15-09	J.E.B.		
11				
12				
13				
14				
15				
16				
17				
18				
19				
20				
21				
22				
23				
24				

STATE OF WEST VIRGINIA  
COUNTY OF WETZEL  
Office of Assessor

CLAY DISTRICT  
SHEET 08

Date, Aerial Photography: APRIL 1958 Date, Map: 3-19-59  
Photo No: 618, 619 Scale: 1" = 100'