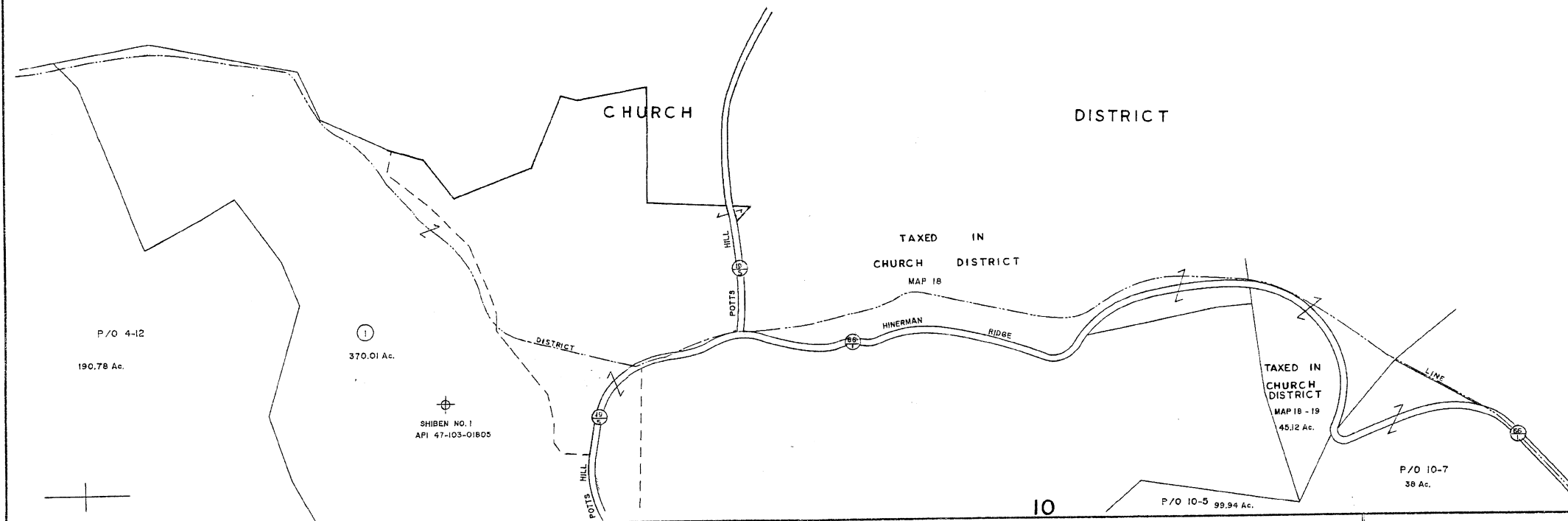


04

DO NOT REPRODUCE



10

For Tax Purposes Only

Prepared by  
**L. ROBERT KIMBALL**  
*Consulting Engineer*  
 Ebensburg, Pennsylvania

Legend

Property line	-----	Original lot line	-----
Edge of pavement or roadway	-----	Deed lot number	-----
Corporation line	-----	Parcel or index number in this improvement	-----
District line	-----	Railroad	-----
County line	-----		

Revisions

No.	Description	Date	By
1	Original Map	7-1-84	C.P.
2	EXCALIBUR GRAPHICS 7/91		
3	8-1-2003	JEB	
4	10-1-07	JEB	

STATE OF WEST VIRGINIA  
 COUNTY OF WETZEL  
 Office of Assessor

GRANT DISTRICT  
 SHEET 05

Date, Aerial Photography: OCTOBER, 1958 Date, Map: 9-3-59  
 Photo No: 232 Scale: 1" = 400'