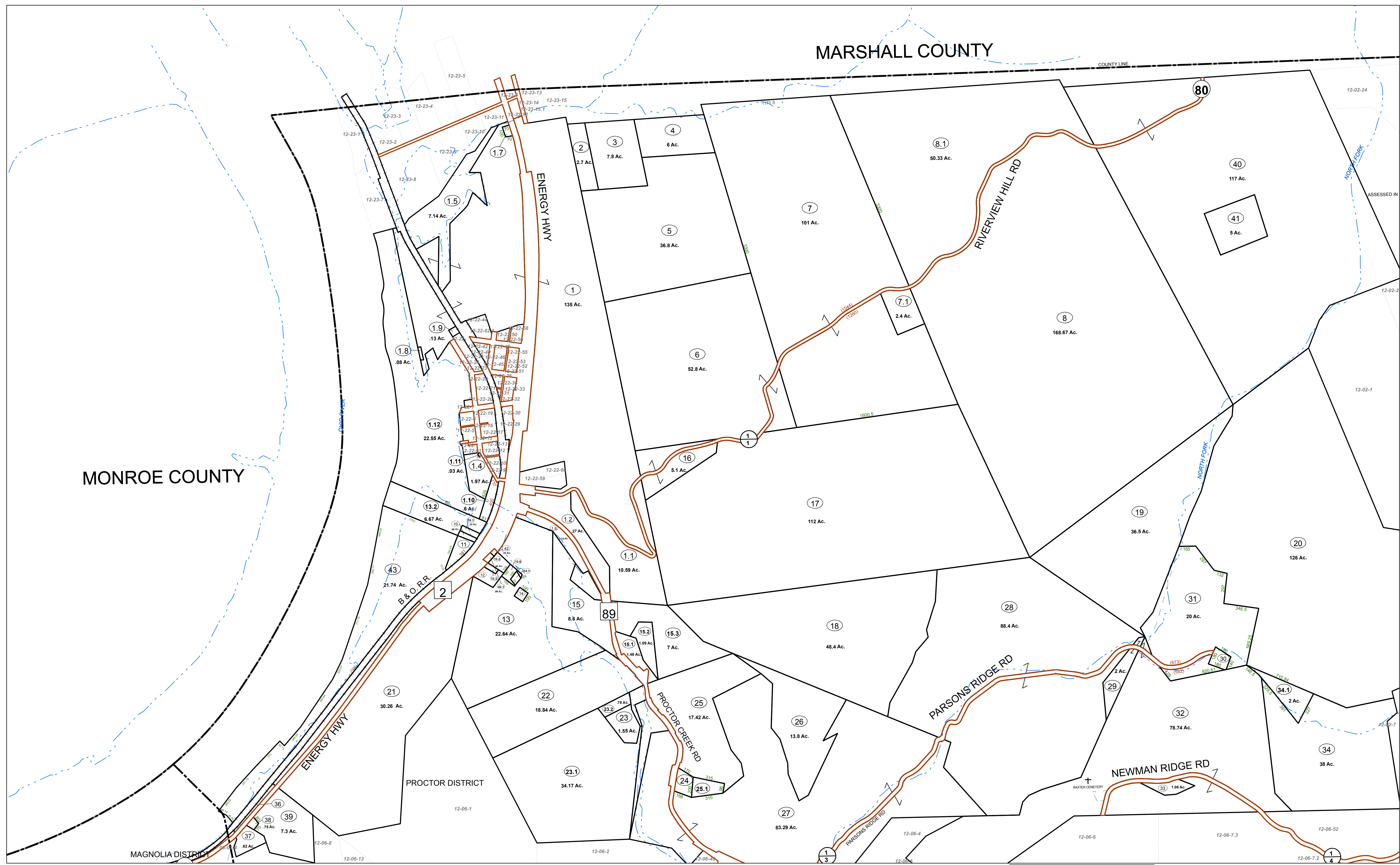


MARSHALL COUNTY

COUNTY LINE

MONROE COUNTY



FOR TAX PURPOSES ONLY

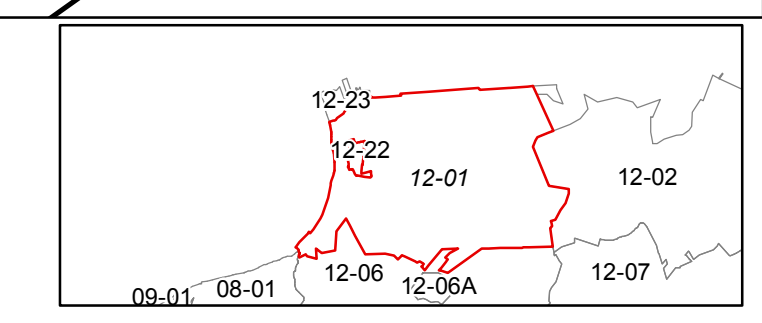
For copies contact Wetzel County Assessors Office at 304-455-8216. Any unauthorized reproduction will be subject to the penalties outlined in West Virginia Code.

Legend

Property Line	Original Lot Line
Road Right of Way	Lot Number (15)
Corporation Line	Parcel Number (99)
District Line	Water
County Line	Railroad

R	1 Revised 7/1/85	9 Revised 7/15/99	17
0	2 Revised 7/1/81	10 Revised 6/29/10	18
V	3 Revised 7/1/84	11 Revised 10/5/2011	19
J	4 Revised 7/1/87	12 Revised 12/20/15	20
S	5 Revised 7/1/91	13 Revised 12/30/2016	21
I	6 Revised 12/1/96	14	22
O	7 Revised 6/1/05	15	23
S	8 Revised 10/1/07	16	24

STATE OF WEST VIRGINIA
COUNTY OF WETZEL
Office of Assessor



PROCTOR DISTRICT
SHEET 01

Date, Aerial Photography: 2013
Date, Map: 1/27/2017
Scale: 1" = 400'