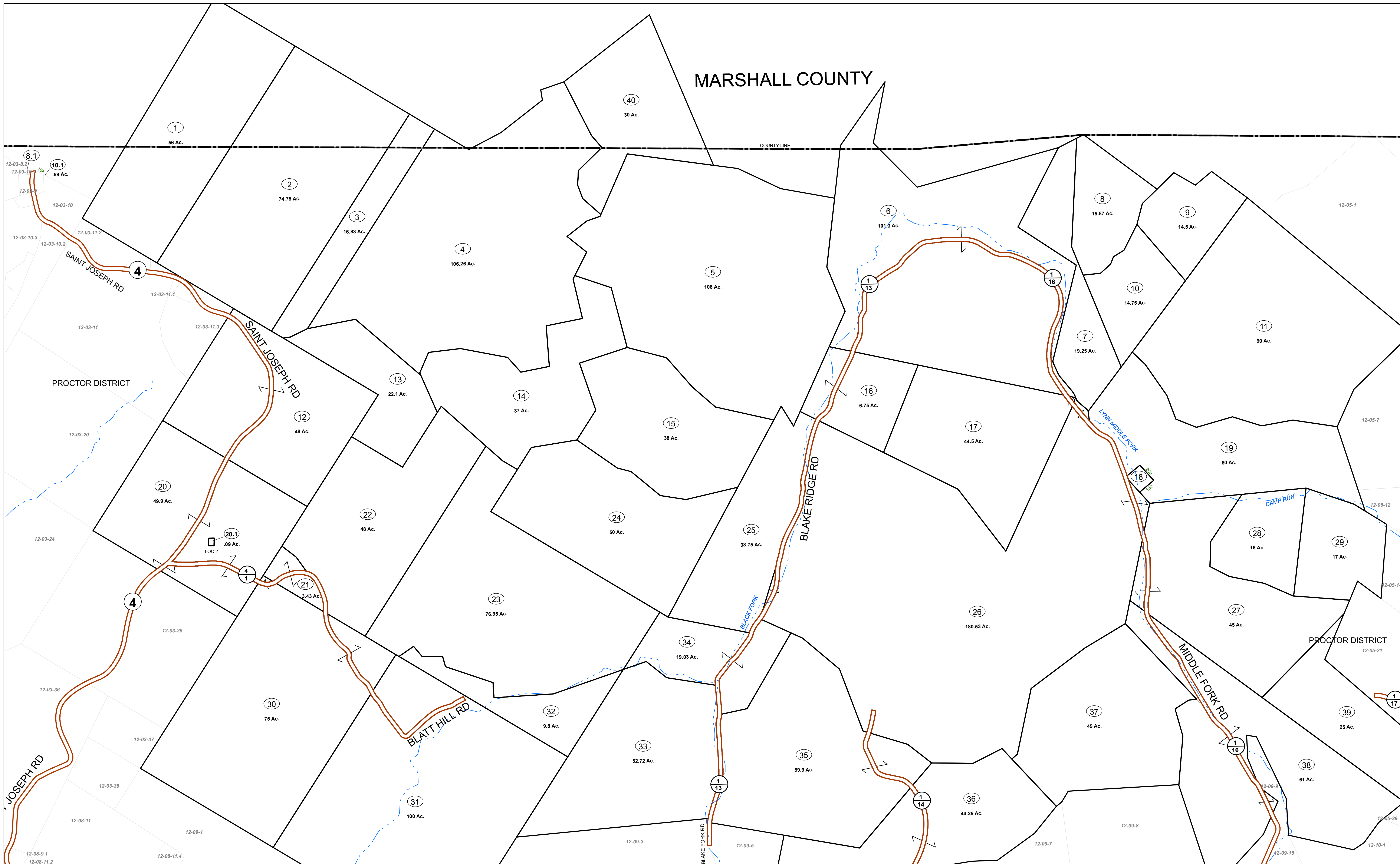


MARSHALL COUNTY



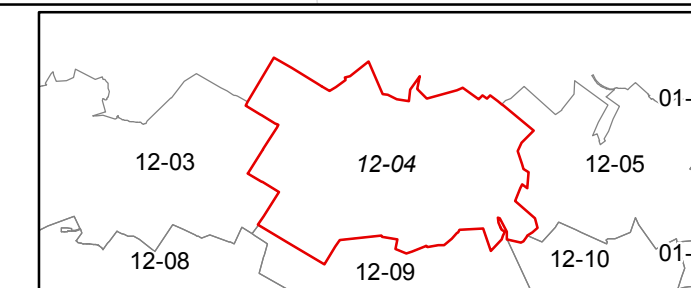
FOR TAX PURPOSES ONLY

For copies contact Wetzel County Assessors Office at 304-455-8216. Any unauthorized reproduction will be subject to the penalties outlined in West Virginia Code.

Legend	
Property Line	Original Lot Line
Road Right of Way	Lot Number (15)
Corporation Line	Parcel Number (99)
District Line	Water
County Line	Railroad

R	1	Revised 7/1/85	9	Revised 7/15/09	17
O	2	Revised 7/1/81	10	Revised 6/29/10	18
V	3	Revised 7/1/84	11	Revised 10/5/2011	19
J	4	Revised 7/1/87	12	Revised 3/2/2015	20
S	5	Revised 7/1/91	13	Revised 12/30/2016	21
I	6	Revised 12/1/96	14		22
N	7	Revised 6/1/05	15		23
S	8	Revised 10/1/07	16		24

STATE OF WEST VIRGINIA
 COUNTY OF WETZEL
 Office of Assessor



PROCTOR DISTRICT
 SHEET 04

Date, Aerial Photography: 2013
 Date, Map: 1/27/2017
 Scale: 1" = 400'