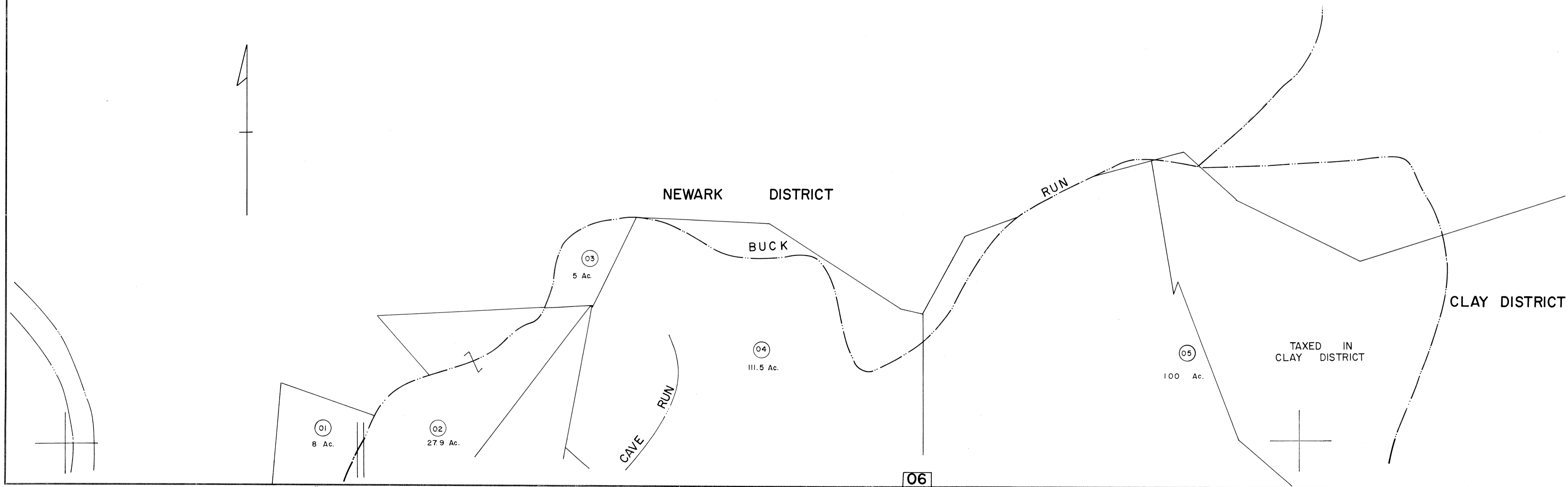


02



06

FOR TAX PURPOSES ONLY

Prepared by
L. ROBERT KIMBALL
Consulting Engineer
 Ebensburg, Pennsylvania

LEGEND

Property line	—————	Original lot line
Edge of pavement or roadway	—————	Deed lot number in parenthesis	(15)
Corporation line	Parcel or index number in circle	⊙
District line	Improvement	o
County line	Railroad	+

REVISIONS

No.	Date	Description	By	Check
1	JULY, 1988	TRL	9	17
2		7-82 LES	10	18
3	July, 1987	TRL	11	19
4			12	20
5			13	21
6			14	22
7			15	23
8			16	24

STATE OF WEST VIRGINIA
 COUNTY OF WIRT
 Office of Assessor

ELIZABETH DISTRICT
 SHEET 03

Date, Aerial Photography: APRIL, 1960 Date, Map: SEPT., 1960
 Photo No: 06-34 Scale: 1" = 400'