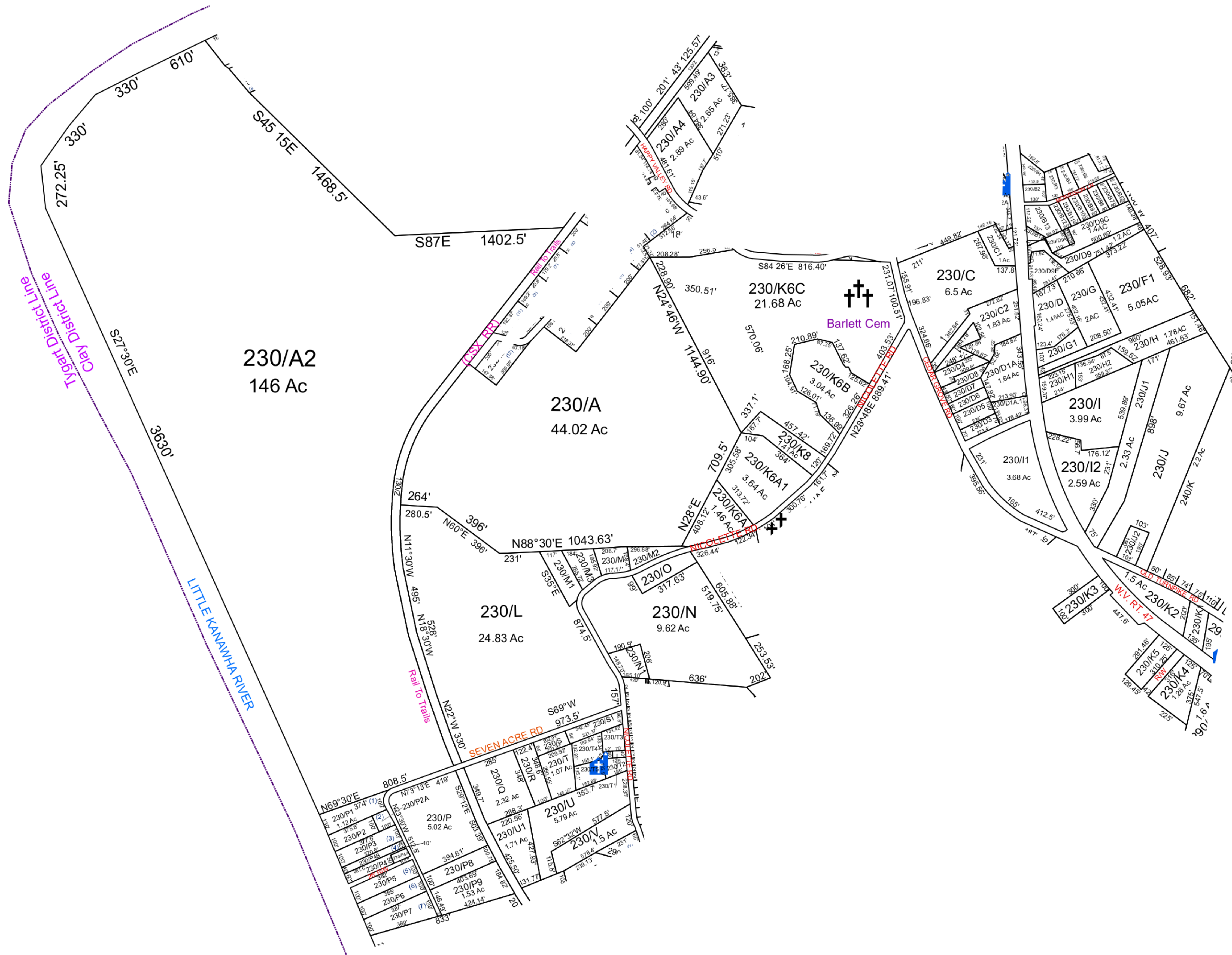


CLAY - 230



For Tax Purposes Only This Is not Authoritative Data
 ALL FINISHED TAX MAPS CREATED UNDER THE PROVISIONS OF LEGISLATION ARE THE PROPERTY OF THE COUNTY ASSESSORS WHO CREATED THEM AND THE REPRODUCTION, COPYING, DISTRIBUTION, SALE OR LEASE OF SUCH TAX MAPS OR COPIES THEREOF WITHOUT THE WRITTEN PERMISSION OF THE RESPECTIVE COUNTY ASSESSOR IS PROHIBITED BY LAW

44	180	181
150	230	240
200	290	290

Prepared by: RDS

Legend		
	Deed lot Number (15)	POST OFFICE
	District Number 01	CEMT.
	Parcel or Index Number 1925	LIBRARY
	HOSPITAL	CHURCH
	SCHOOL	AIRPORT
	District_Lines	FIRE STATION

Revisions		
1	7	13
2	8	14
3	9	15
4	10	16
5	11	17
6	12	18

WOOD COUNTY
 STATE OF WEST VIRGINIA
 Office of Assessor

District	SubDivision
01 - CLAY	
SHEET NO: 230	
Date, Aerial Photography: 2003	Date Map: Dec 08, 2014
Scale: 1" = 300'	