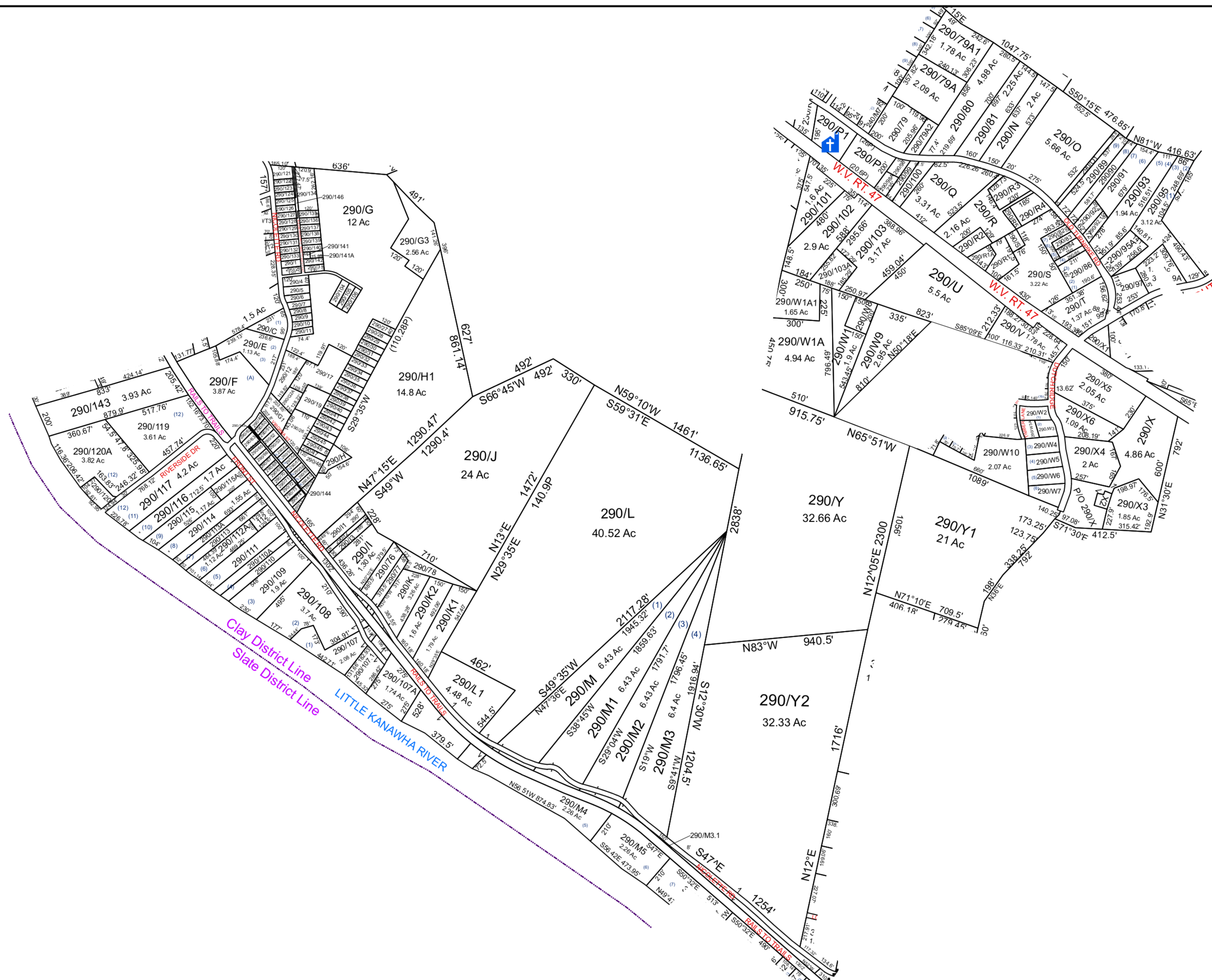


CLAY - 290



For Tax Purposes Only This Is not Authoritative Data
 T.E.C. RESTRICTIONS
 ALL FINISHED TAX MAPS CREATED UNDER THE PROVISIONS OF LEGISLATION ARE THE PROPERTY OF THE COUNTY ASSESSORS WHO CREATED THEM AND THE REPRODUCTION, COPYING, DISTRIBUTION, SALE OR LEASE OF SUCH TAX MAPS OR COPIES THEREOF WITHOUT THE WRITTEN PERMISSION OF THE RESPECTIVE COUNTY ASSESSOR IS PROHIBITED BY LAW

230	231	300
250	290	310
250	10	310

Legend		
	Deed lot Number	(15)
	District Number	01
	Parcel or Index Number	1925
	HOSPITAL	
	SCHOOL	
	Road Right of Way	
	District Lines	
	POST OFFICE	
	CENT.	
	LIBRARY	
	CHURCH	
	AIRPORT	
	FIRE STATION	

Revisions		
1	7	13
2	8	14
3	9	15
4	10	16
5	11	17
6	12	18

WOOD COUNTY
 STATE OF WEST VIRGINIA
 Office of Assessor

District	SubDivision
01 - CLAY	
SHEET NO: 290	
Date, Aerial Photography: 2003	Date Map: Dec 08, 2014
Scale: 1" = 300'	