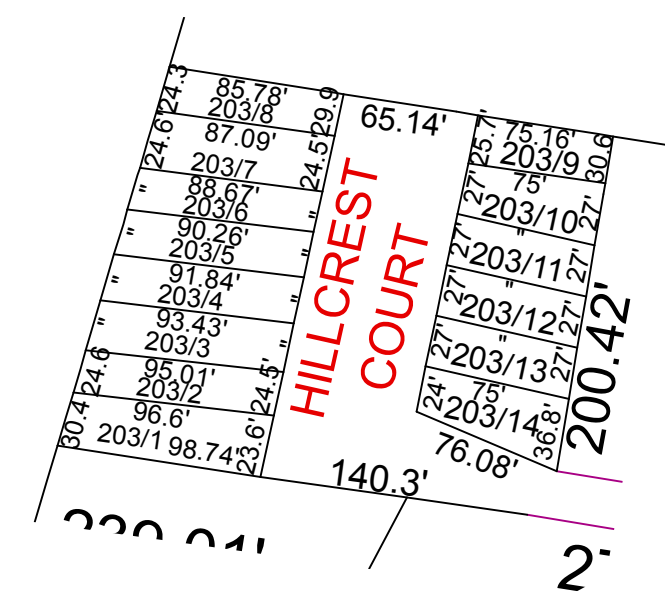


Lubeck - 203



For Tax Purposes Only this
is not Authoritative Data
7.5.C.6 RESTRICTIONS
ALL FINISHED TAX MAPS CREATED UNDER THE
PROVISIONS OF LEGISLATION ARE THE
PROPERTY OF THE COUNTY ASSESSORS
WHO CREATED THEM AND THE REPRODUCTION,
COPYING, DISTRIBUTION, SALE OR LEASE OF
SUCH TAX MAPS OR COPIES THEREOF WITHOUT
THE WRITTEN PERMISSION OF THE RESPECTIVE
COUNTY ASSESSOR IS PROHIBITED BY LAW

190	200	200
190	203	200
190	200	200

Prepared by: RDS

Legend		
--- Previous Deed	Deed lot Number (15)	District_Lines
— Property	MAP / Parcel Number 19/25	†† CEMT.
— Railroad Right of Way	District Number 10	LIBRARY
— Road and Railroad R/W	HOSPITAL	AIRPORT
- - - Road Easement	POST OFFICE	SCHOOL
— Road Right of Way	SCHOOL	CHURCH

Revisions		
1	7	13
2	8	14
3	9	15
4	10	16
5	11	17
6	12	18

WOOD COUNTY
STATE OF WEST VIRGINIA
Office of Assessor

District SUBDIVISION
LUBECK LAIR OF II

SHEET NO: 203

Date, Aerial Photography: 2003 Date, Map: May 29, 2013
Scale: 1" = 100'