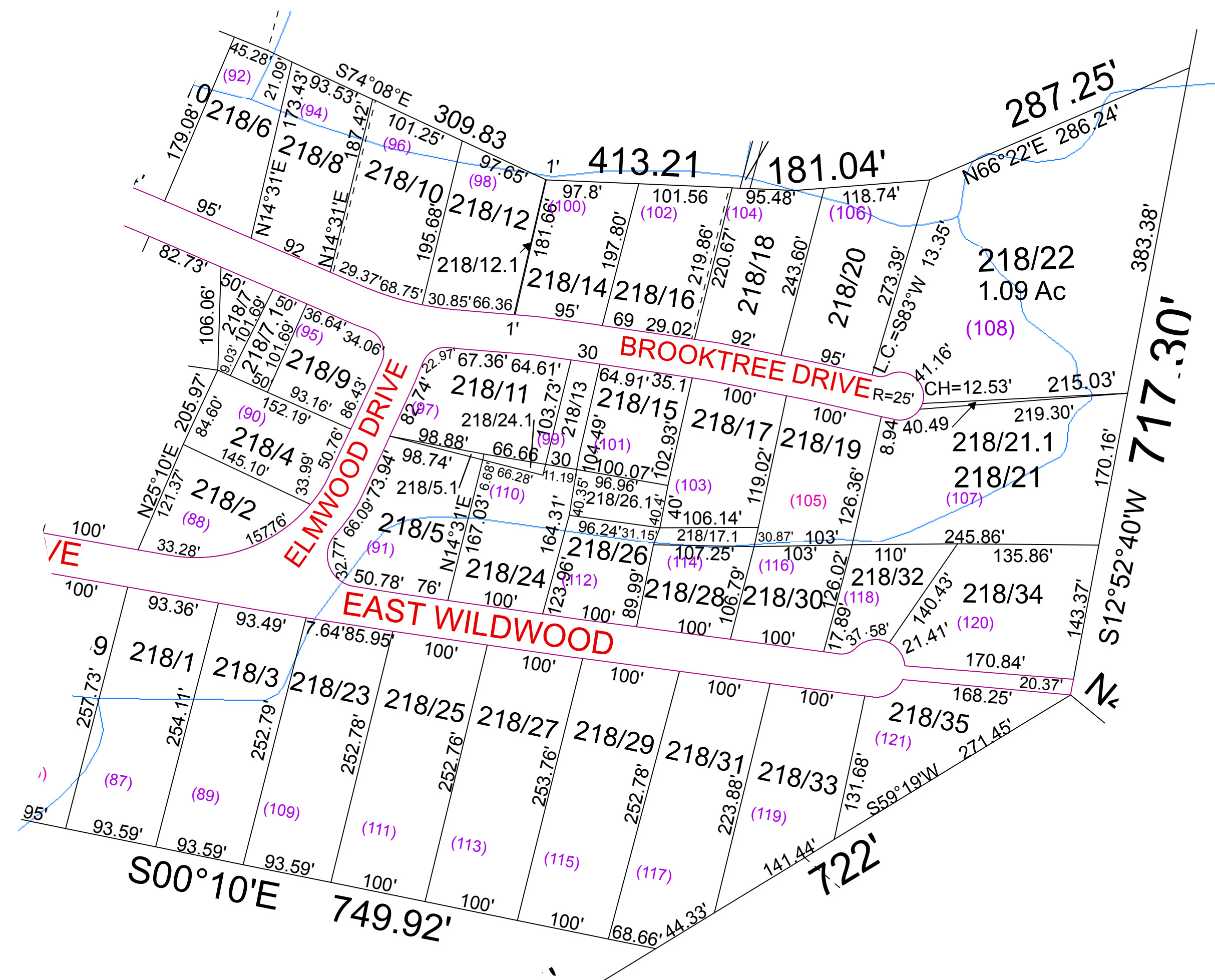


Lubeck - 218



For Tax Purposes Only this is not Authoritative Data
 7.3.C.6 RESTRICTIONS
 ALL FINISHED TAX MAPS CREATED UNDER THE PROVISIONS OF LEGISLATION ARE THE PROPERTY OF THE COUNTY ASSESSORS WHO CREATED THEM AND THE REPRODUCTION, COPYING, DISTRIBUTION, SALE OR LEASE OF SUCH TAX MAPS OR COPIES THEREOF WITHOUT THE WRITTEN PERMISSION OF THE RESPECTIVE COUNTY ASSESSOR IS PROHIBITED BY LAW

216	210	210
216	218	210
216	210	210

Prepared by: RDS

Legend		
	Deed lot Number (15)	
	MAP / Parcel Number 19/25	
	District Number 10	
	HOSPITAL	
	POST OFFICE	
	SCHOOL	

Revisions		
1	7	13
2	8	14
3	9	15
4	10	16
5	11	17
6	12	18

WOOD COUNTY
 STATE OF WEST VIRGINIA
 Office of Assessor

District	SUBDIVISION
LUBECK WILDWOOD SEC F	
SHEET NO: 218	
Date: Aerial Photography: 2003	Date: Map: May 29, 2013
Scale: 1" = 100'	