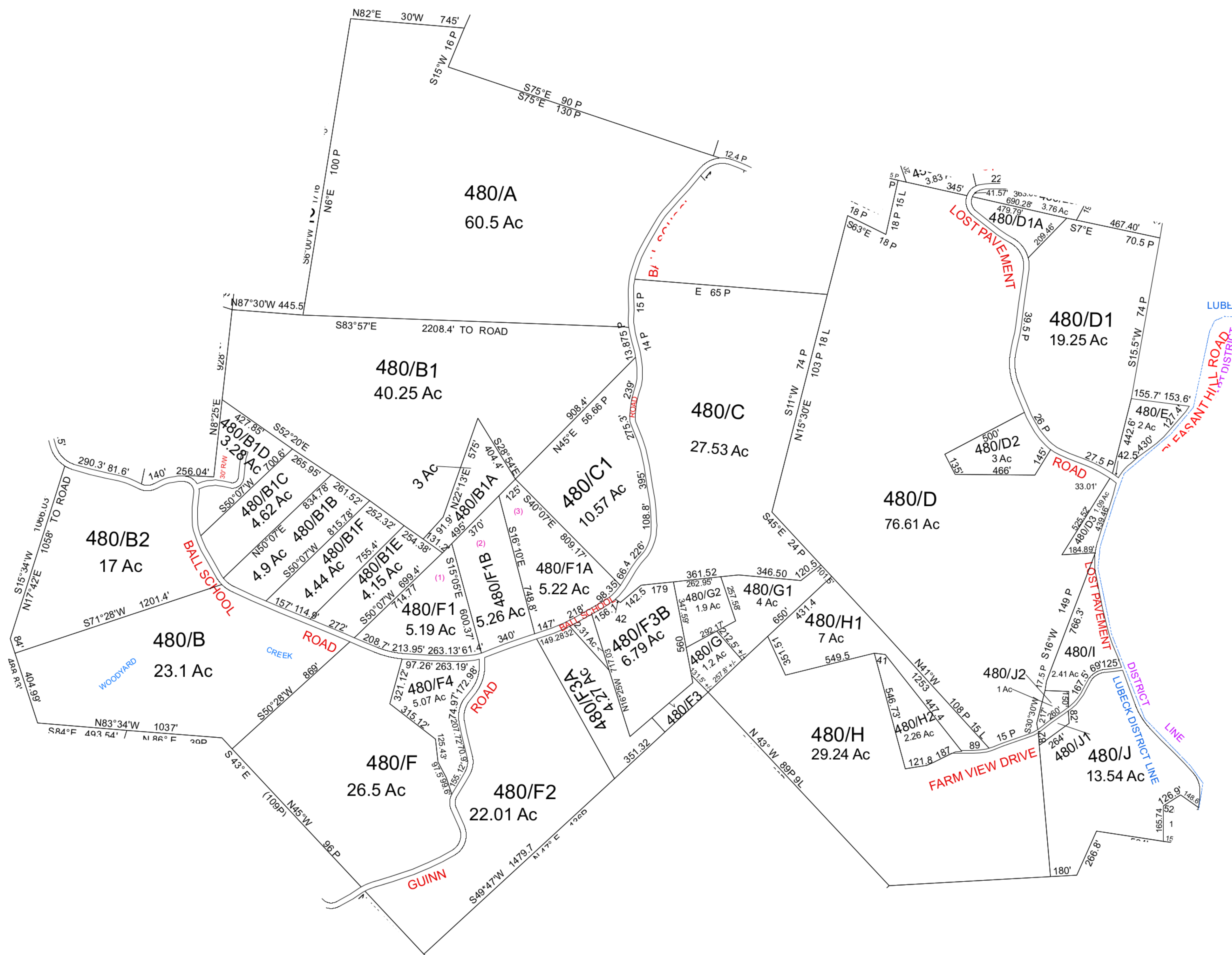


Lubeck - 480



For Tax Purposes Only this is not Authoritative Data
 7.8.C.6 RESTRICTIONS
 ALL FINISHED TAX MAPS CREATED UNDER THE PROVISIONS OF LEGISLATION ARE THE PROPERTY OF THE COUNTY ASSESSORS WHO CREATED THEM AND THE REPRODUCTION, COPYING, DISTRIBUTION, SALE OR LEASE OF SUCH TAX MAPS OR COPIES THEREOF WITHOUT THE WRITTEN PERMISSION OF THE RESPECTIVE COUNTY ASSESSOR IS PROHIBITED BY LAW

440	450	210
440	480	260
510	520	260

Prepared by: RDS

Legend		
	Deed Lot Number (15)	
	MAP / Parcel Number 1925	
	District Number 10	
		HOSPITAL
		POST OFFICE
		SCHOOL
		CEMT.
		LIBRARY
		AIRPORT
		CHURCH

Revisions		
1	7	13
2	8	14
3	9	15
4	10	16
5	11	17
6	12	18

WOOD COUNTY
 STATE OF WEST VIRGINIA
 Office of Assessor

District	SUBDIVISION
LUBECK	
SHEET NO: 480	
Date, Aerial Photography: 2003	Date, Map: Dec 08, 2014
Scale: 1" = 300'	