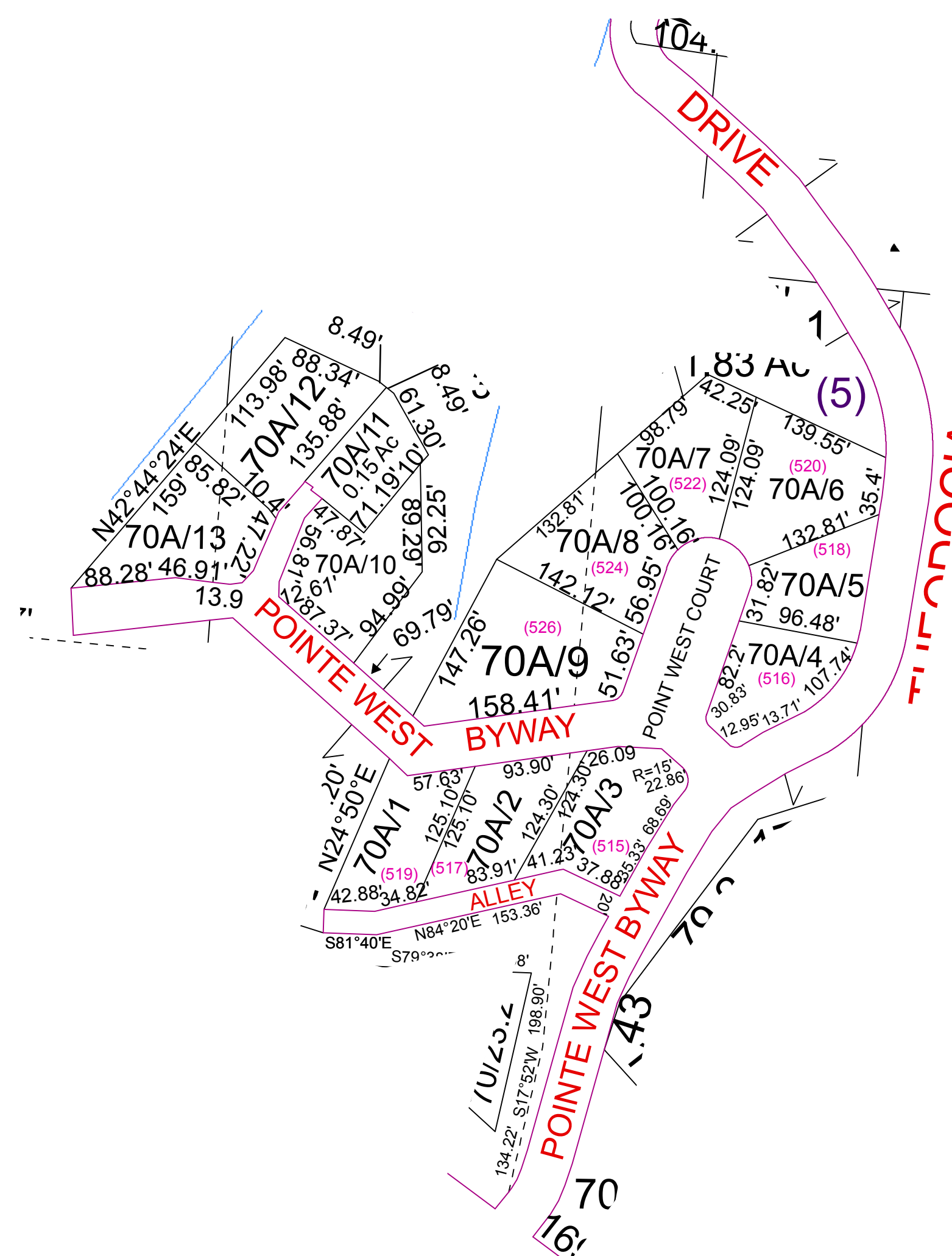


# Lubeck - 70A



For Tax Purposes Only this is not Authoritative Data  
 7.5.C.6 RESTRICTIONS  
 ALL FINISHED TAX MAPS CREATED UNDER THE PROVISIONS OF LEGISLATION ARE THE PROPERTY OF THE COUNTY ASSESSORS WHO CREATED THEM AND THE REPRODUCTION, COPYING, DISTRIBUTION, SALE OR LEASE OF SUCH TAX MAPS OR COPIES THEREOF WITHOUT THE WRITTEN PERMISSION OF THE RESPECTIVE COUNTY ASSESSOR IS PROHIBITED BY LAW

70	70	70
70	70A	70
70	70	70

Prepared by: RDS

Legend		
	Deed lot Number (15)	
	MAP / Parcel Number 19/25	
	District Number 10	

Revisions		
1	7	13
2	8	14
3	9	15
4	10	16
5	11	17
6	12	18

**WOOD COUNTY**  
 STATE OF WEST VIRGINIA  
 Office of Assessor

District	SUBDIVISION
LUBECK	POINTE WEST PH III & IV
SHEET NO: 70A	
Date, Aerial Photography: 2003	Date, Map: May 29, 2013
Scale: 1" = 100'	