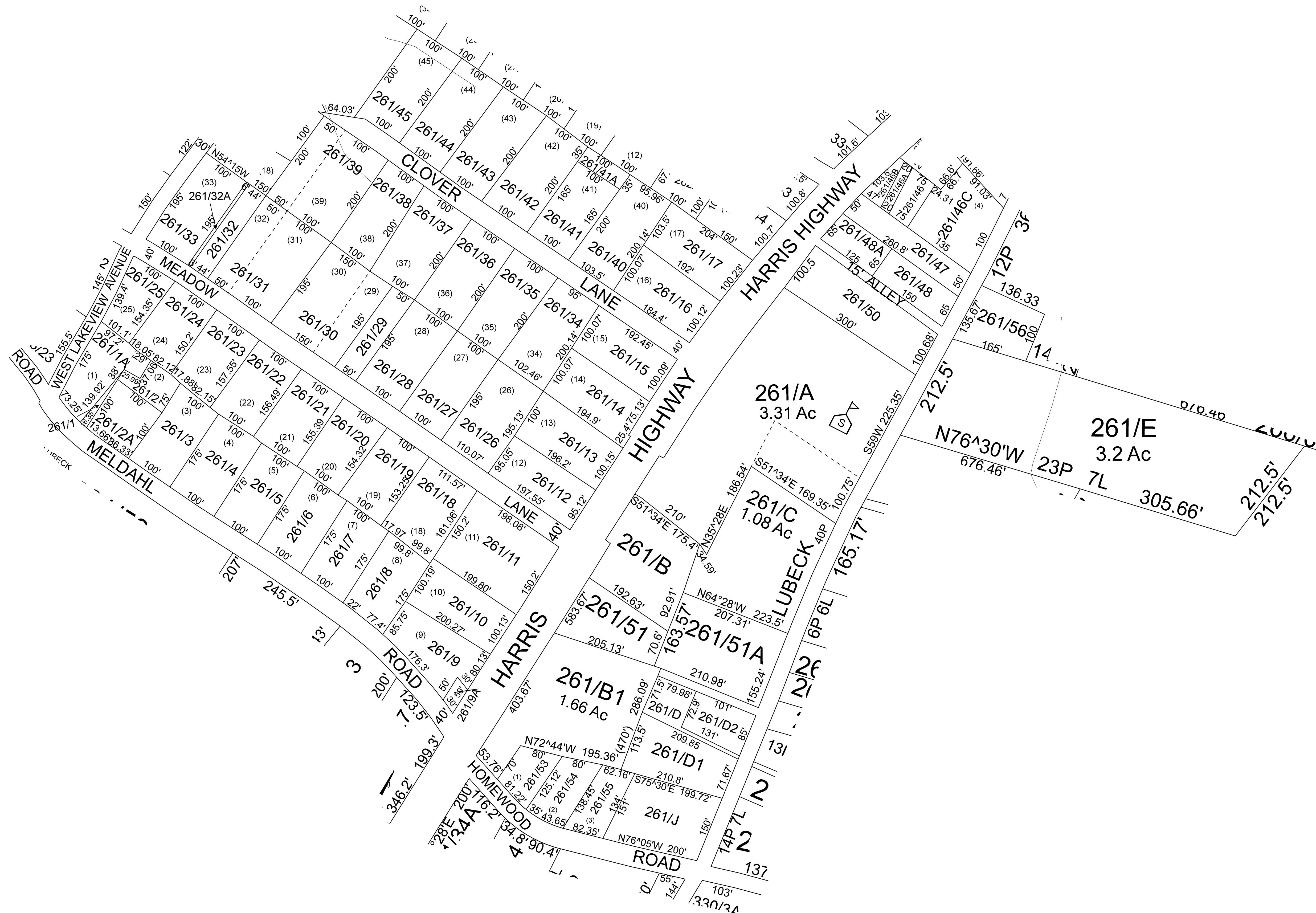


Lubeck - 261



For Tax Purposes Only this is not Authoritative Data
7.8.c.6 RESTRICTIONS
ALL FINISHED TAX MAPS CREATED UNDER THE PROVISIONS OF LEGISLATION ARE THE PROPERTY OF THE COUNTY ASSESSORS WHO CREATED THEM AND THE REPRODUCTION, COPYING, DISTRIBUTION, SALE OR LEASE OF SUCH TAX MAPS OR COPIES THEREOF WITHOUT THE WRITTEN PERMISSION OF THE RESPECTIVE COUNTY ASSESSOR IS PROHIBITED BY LAW

263	262	260
263	261	260
331	331	260

Prepared by:RDS

Legend		
	Deed lot Number (15)	
	MAP / Parcel Number 1926	
	District Number 10	
	HOSPITAL	
	POST OFFICE	
	SCHOOL	

Revisions		
1	7	13
2	8	14
3	9	15
4	10	16
5	11	17
6	12	18

WOOD COUNTY
STATE OF WEST VIRGINIA
Office of Assessor

District	SUBDIVISION
LUBECK MORLAN AND AYERS ADD	
SHEET NO: 261	
Date: Aerial Photography: 2003	Date: Map: Nov 08, 2011
Scale: 1" = 100'	